

Datasheet for ABIN7432784
anti-Complement C2 antibody (AA 245-451)

6 Images

[Go to Product page](#)

Overview

| | |
|----------------------|--|
| Quantity: | 100 µL |
| Target: | Complement C2 |
| Binding Specificity: | AA 245-451 |
| Reactivity: | Human |
| Host: | Rabbit |
| Clonality: | Polyclonal |
| Conjugate: | This Complement C2 antibody is un-conjugated |
| Application: | Western Blotting (WB), Immunohistochemistry (IHC), Immunoprecipitation (IP), Immunocytochemistry (ICC) |

Product Details

| | |
|-------------------|--|
| Purpose: | Polyclonal Antibody to Complement Component 2 (C2) |
| Immunogen: | Recombinant Complement Component 2 (C2) corresponding to Ile245~His451 (Accession # P06681) |
| Isotype: | IgG |
| Specificity: | The antibody is a rabbit polyclonal antibody raised against C2. It has been selected for its ability to recognize C2 in immunohistochemical staining and western blotting. |
| Cross-Reactivity: | Mouse, Rat |
| Purification: | Antigen-specific affinity chromatography followed by Protein A affinity chromatography |

Target Details

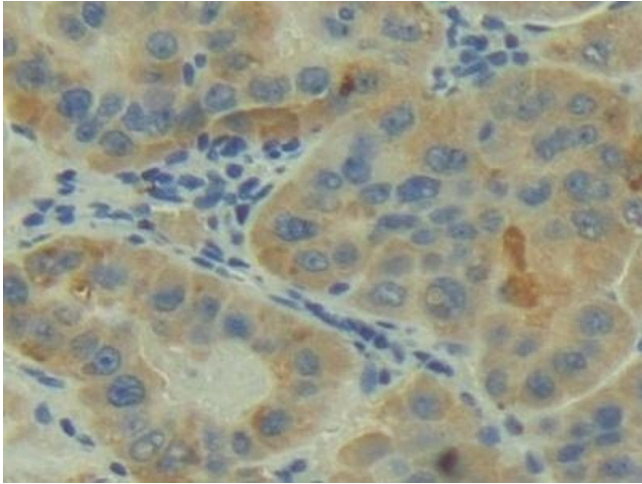
| | |
|-------------------|---|
| Target: | Complement C2 |
| Alternative Name: | Complement Component 2 (Complement C2 Products) |
| Background: | CO2, C3/C5 convertase |

Application Details

| | |
|--------------------|---|
| Application Notes: | Western blotting: 0.5-2 µg/mL Immunohistochemistry: 5-20 µg/mL Immunocytochemistry: 5-20 µg/mL Optimal working dilutions must be determined by end user. |
| Comment: | The thermal stability is described by the loss rate. The loss rate was determined by accelerated thermal degradation test, that is, incubate the protein at 37°C for 48h, and no obvious degradation and precipitation were observed. The loss rate is less than 5% within the expiration date under appropriate storage condition. |
| Restrictions: | For Research Use only |

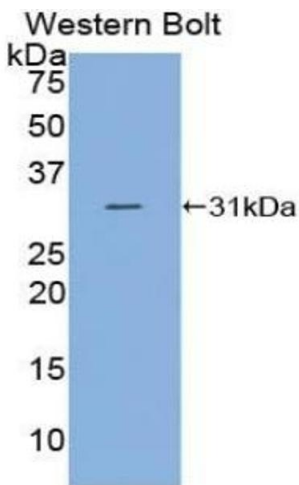
Handling

| | |
|--------------------|---|
| Format: | Liquid |
| Buffer: | 0.01M PBS, pH 7.4, containing 0.05 % Proclin-300, 50 % glycerol. |
| Preservative: | ProClin |
| Precaution of Use: | This product contains ProClin: a POISONOUS AND HAZARDOUS SUBSTANCE which should be handled by trained staff only. |
| Storage: | 4 °C,-20 °C |
| Storage Comment: | Store at 4°C for frequent use. Stored at -20°C in a manual defrost freezer for two year without detectable loss of activity. Avoid repeated freeze-thaw cycles. |
| Expiry Date: | 24 months |



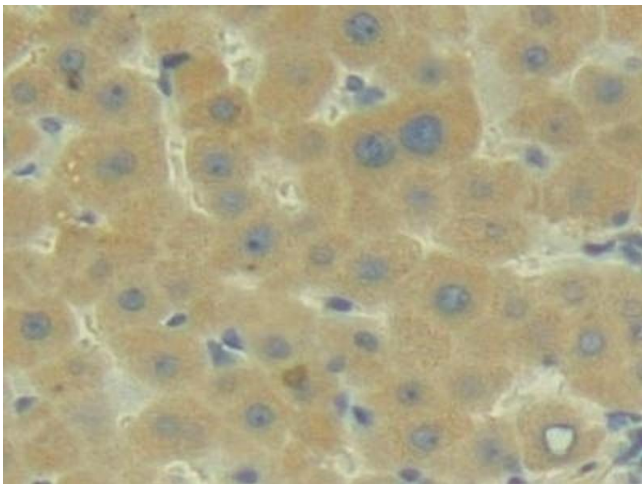
Immunohistochemistry

Image 1. Detection of C2 in Human Liver cancer Tissue using Polyclonal Antibody to Complement Component 2 (C2)



Western Blotting

Image 2. Detection of Recombinant C2, Human using Polyclonal Antibody to Complement Component 2 (C2)



Immunohistochemistry

Image 3. Detection of C2 in Human Liver Tissue using Polyclonal Antibody to Complement Component 2 (C2)

Please check the [product details page](#) for more images. Overall 6 images are available for ABIN7432784.