

Datasheet for ABIN7432856

anti-Complement C4 antibody (AA 975-1336)

5 Images

[Go to Product page](#)

Overview

Quantity:	100 µL
Target:	Complement C4 (C4)
Binding Specificity:	AA 975-1336
Reactivity:	Human
Host:	Rabbit
Clonality:	Polyclonal
Conjugate:	This Complement C4 antibody is un-conjugated
Application:	Western Blotting (WB), Immunohistochemistry (IHC), Immunoprecipitation (IP), Immunocytochemistry (ICC)

Product Details

Purpose:	Polyclonal Antibody to Complement Component 4 (C4)
Immunogen:	Recombinant Complement Component 4 (C4) corresponding to Asn975~Arg1336 with N-terminal His Tag
Isotype:	IgG
Specificity:	The antibody is a rabbit polyclonal antibody raised against C4. It has been selected for its ability to recognize C4 in immunohistochemical staining and western blotting.
Purification:	Antigen-specific affinity chromatography followed by Protein A affinity chromatography

Target Details

Target:	Complement C4 (C4)
---------	--------------------

Target Details

Alternative Name: Complement Component 4 ([C4 Products](#))

Pathways: [Complement System](#)

Application Details

Application Notes: Western blotting: 0.5-5 µg/mL
Immunohistochemistry: 5-50 µg/mL
Immunocytochemistry: 5-50 µg/mL
Optimal working dilutions must be determined by end user.

Comment: The thermal stability is described by the loss rate. The loss rate was determined by accelerated thermal degradation test, that is, incubate the protein at 37°C for 48h, and no obvious degradation and precipitation were observed. The loss rate is less than 5% within the expiration date under appropriate storage condition.

Restrictions: For Research Use only

Handling

Format: Liquid

Buffer: 0.01M PBS, pH 7.4, containing 0.05 % Proclin-300, 50 % glycerol.

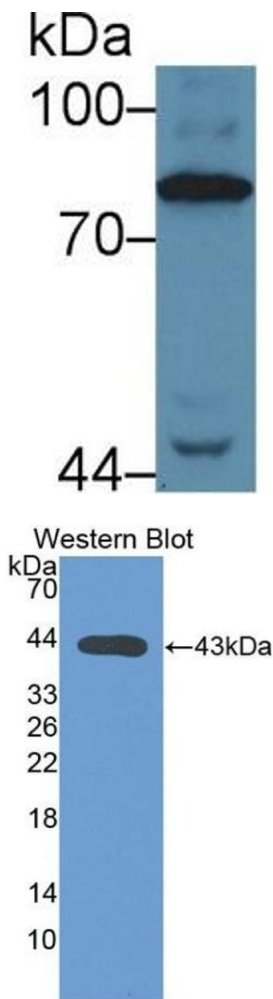
Preservative: ProClin

Precaution of Use: This product contains ProClin: a POISONOUS AND HAZARDOUS SUBSTANCE which should be handled by trained staff only.

Storage: 4 °C,-20 °C

Storage Comment: Store at 4°C for frequent use. Stored at -20°C in a manual defrost freezer for two year without detectable loss of activity. Avoid repeated freeze-thaw cycles.

Expiry Date: 24 months

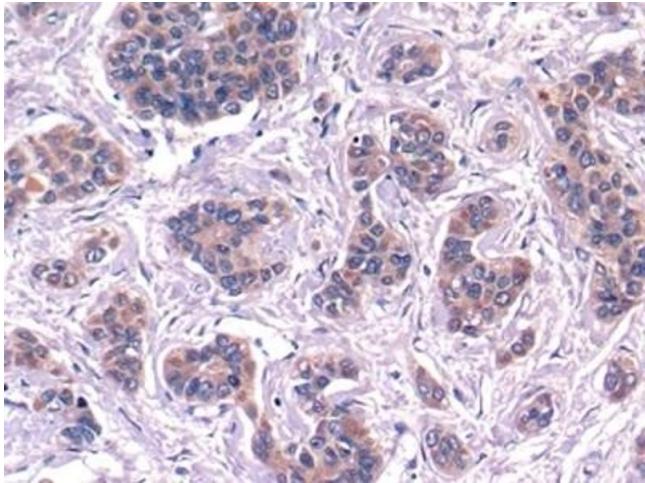


Western Blotting

Image 1. Detection of C4 in Human Serum using Polyclonal Antibody to Complement Component 4 (C4)

Western Blotting

Image 2. Detection of Recombinant C4, Human using Polyclonal Antibody to Complement Component 4 (C4)



Immunohistochemistry

Image 3. Detection of C4 in Human Liver cancer Tissue using Polyclonal Antibody to Complement Component 4 (C4)

Please check the [product details page](#) for more images. Overall 5 images are available for ABIN7432856.