



[Go to Product page](#)

Datasheet for ABIN7432910
anti-PCK1 antibody (AA 311-558)

2 Images

Overview

| | |
|----------------------|--|
| Quantity: | 100 µL |
| Target: | PCK1 |
| Binding Specificity: | AA 311-558 |
| Reactivity: | Human |
| Host: | Rabbit |
| Clonality: | Polyclonal |
| Conjugate: | This PCK1 antibody is un-conjugated |
| Application: | Western Blotting (WB), Immunohistochemistry (IHC), Immunoprecipitation (IP), Immunocytochemistry (ICC) |

Product Details

| | |
|---------------|--|
| Purpose: | Polyclonal Antibody to Phosphoenolpyruvate Carboxykinase 1, Soluble (PCK1) |
| Immunogen: | Recombinant Phosphoenolpyruvate Carboxykinase 1, Soluble (PCK1) corresponding to Asp311~Ile558 (Accession # P35558) |
| Isotype: | IgG |
| Specificity: | The antibody is a rabbit polyclonal antibody raised against PCK1. It has been selected for its ability to recognize PCK1 in immunohistochemical staining and western blotting. |
| Purification: | Antigen-specific affinity chromatography followed by Protein A affinity chromatography |

Target Details

| | |
|---------|------|
| Target: | PCK1 |
|---------|------|

Target Details

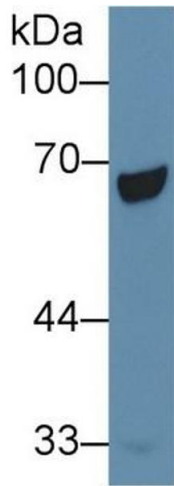
| | |
|-------------------|---|
| Alternative Name: | Phosphoenolpyruvate Carboxykinase 1, Soluble (PCK1 Products) |
| Background: | PEPCK1, PEPCKC, Cytosolic Phosphoenolpyruvate Carboxykinase, Phosphoenolpyruvate carboxykinase, cytosolic [GTP] |
| Pathways: | Positive Regulation of Peptide Hormone Secretion, Carbohydrate Homeostasis |

Application Details

| | |
|--------------------|---|
| Application Notes: | Western blotting: 0.5-2 µg/mL Immunohistochemistry: 5-20 µg/mL Immunocytochemistry: 5-20 µg/mL Optimal working dilutions must be determined by end user. |
| Comment: | The thermal stability is described by the loss rate. The loss rate was determined by accelerated thermal degradation test, that is, incubate the protein at 37°C for 48h, and no obvious degradation and precipitation were observed. The loss rate is less than 5% within the expiration date under appropriate storage condition. |
| Restrictions: | For Research Use only |

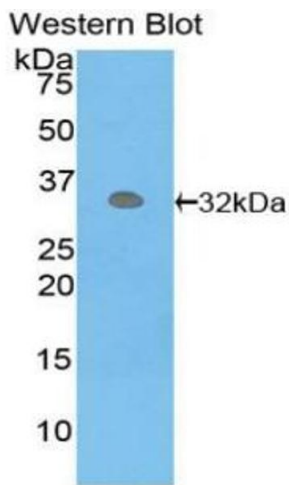
Handling

| | |
|--------------------|---|
| Format: | Liquid |
| Buffer: | PBS, pH 7.4, containing 0.02 % Sodium azide, 50 % glycerol. |
| Preservative: | Sodium azide |
| Precaution of Use: | This product contains Sodium azide: a POISONOUS AND HAZARDOUS SUBSTANCE which should be handled by trained staff only. |
| Storage: | 4 °C,-20 °C |
| Storage Comment: | Store at 4°C for frequent use. Stored at -20°C in a manual defrost freezer for two year without detectable loss of activity. Avoid repeated freeze-thaw cycles. |
| Expiry Date: | 24 months |



Western Blotting

Image 1. Detection of PCK1 in Human Liver lysate using Polyclonal Antibody to Phosphoenolpyruvate Carboxykinase 1, Soluble (PCK1)



Western Blotting

Image 2. Detection of recombinant PCK1 using Polyclonal Antibody to Phosphoenolpyruvate Carboxykinase 1, Soluble (PCK1)