

Datasheet for ABIN7433051
anti-GCLM antibody (AA 40-251)[Go to Product page](#)

11 Images

Overview

Quantity:	100 µL
Target:	GCLM
Binding Specificity:	AA 40-251
Reactivity:	Human
Host:	Rabbit
Clonality:	Polyclonal
Conjugate:	This GCLM antibody is un-conjugated
Application:	Western Blotting (WB), Immunohistochemistry (IHC), Immunoprecipitation (IP), Immunocytochemistry (ICC)

Product Details

Purpose:	Polyclonal Antibody to Glutamate Cysteine Ligase, Modifier Subunit (GCLM)
Immunogen:	Recombinant Glutamate Cysteine Ligase, Modifier Subunit (GCLM) corresponding to Ser40~Ser251 with N-terminal His Tag
Isotype:	IgG
Specificity:	The antibody is a rabbit polyclonal antibody raised against GCLM. It has been selected for its ability to recognize GCLM in immunohistochemical staining and western blotting.
Purification:	Antigen-specific affinity chromatography followed by Protein A affinity chromatography

Target Details

Target:	GCLM
---------	------

Target Details

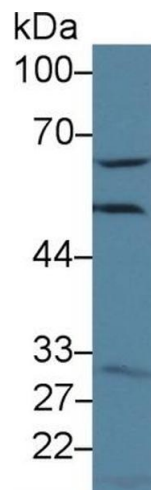
Alternative Name:	Glutamate Cysteine Ligase, Modifier Subunit (GCLM Products)
Background:	GLCLR, GECS, GCL, Gamma Glutamylcysteine Synthetase, Glutamate Cysteine Ligase Regulatory, Gamma-ECS regulatory subunit, Glutamate cysteine ligase modifier subunit

Application Details

Application Notes:	Western blotting: 0.5-2 µg/mL 1:500-2000 Immunohistochemistry: 5-20 µg/mL 1:50-200 Immunocytochemistry: 5-20 µg/mL 1:50-200 Optimal working dilutions must be determined by end user.
Comment:	The thermal stability is described by the loss rate. The loss rate was determined by accelerated thermal degradation test, that is, incubate the protein at 37°C for 48h, and no obvious degradation and precipitation were observed. The loss rate is less than 5% within the expiration date under appropriate storage condition.
Restrictions:	For Research Use only

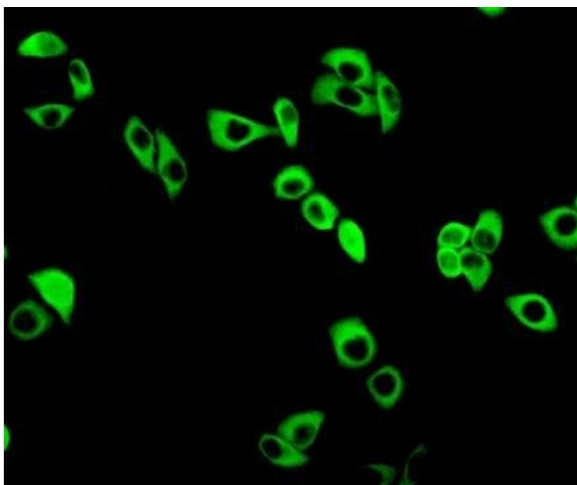
Handling

Format:	Liquid
Buffer:	0.01M PBS, pH 7.4, containing 0.05 % Proclin-300, 50 % glycerol.
Preservative:	ProClin
Precaution of Use:	This product contains ProClin: a POISONOUS AND HAZARDOUS SUBSTANCE which should be handled by trained staff only.
Storage:	4 °C,-20 °C
Storage Comment:	Store at 4°C for frequent use. Stored at -20°C in a manual defrost freezer for two year without detectable loss of activity. Avoid repeated freeze-thaw cycles.
Expiry Date:	24 months



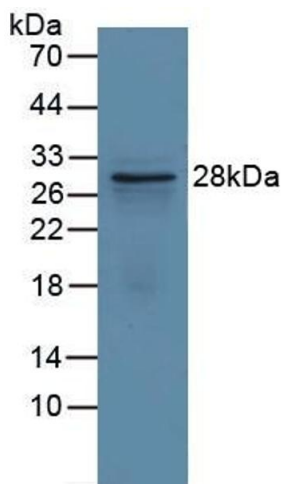
Western Blotting

Image 1. Detection of GCLM in Human Hela cell lysate using Polyclonal Antibody to Glutamate Cysteine Ligase, Modifier Subunit (GCLM)



Immunofluorescence

Image 2. Detection of GCLM in MCF7 cells using Polyclonal Antibody to Glutamate Cysteine Ligase, Modifier Subunit (GCLM)



Western Blotting

Image 3. Detection of Recombinant GCLM, Human using Polyclonal Antibody to Glutamate Cysteine Ligase, Modifier Subunit (GCLM)

Please check the [product details page](#) for more images. Overall 11 images are available for ABIN7433051.