



[Go to Product page](#)

Datasheet for ABIN7433177
anti-CD35 antibody (AA 1780-2039)

7 Images

Overview

Quantity:	100 µL
Target:	CD35 (CR1)
Binding Specificity:	AA 1780-2039
Reactivity:	Human
Host:	Rabbit
Clonality:	Polyclonal
Conjugate:	This CD35 antibody is un-conjugated
Application:	Western Blotting (WB), Immunohistochemistry (IHC), Immunoprecipitation (IP), Immunocytochemistry (ICC)

Product Details

Purpose:	Polyclonal Antibody to Complement Receptor 1, Erythrocyte (CR1)
Immunogen:	Recombinant Complement Receptor 1, Erythrocyte (CR1) corresponding to Ile1780~Pro2039 with N-terminal His Tag
Isotype:	IgG
Specificity:	The antibody is a rabbit polyclonal antibody raised against CR1. It has been selected for its ability to recognize CR1 in immunohistochemical staining and western blotting.
Cross-Reactivity:	Mouse, Rat
Purification:	Antigen-specific affinity chromatography followed by Protein A affinity chromatography

Target Details

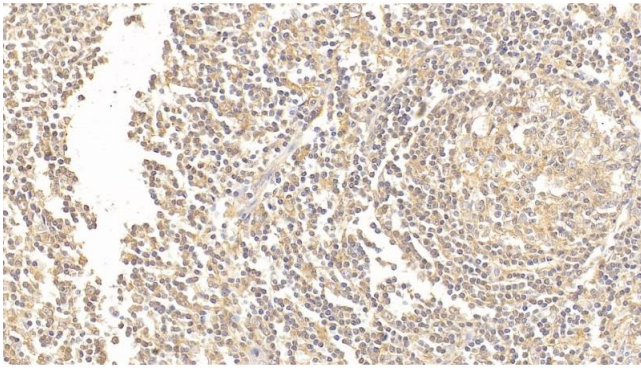
Target:	CD35 (CR1)
Alternative Name:	Complement Receptor 1, Erythrocyte (CR1 Products)
Background:	CD35, C3BR, KN, C3b/C4b Receptor, Including Knops Blood Group System, Immune Adherence Receptor
Pathways:	Complement System , Regulation of Leukocyte Mediated Immunity , Positive Regulation of Endopeptidase Activity

Application Details

Application Notes:	Western blotting: 0.5-2 µg/mL 1:500-2000 Immunohistochemistry: 5-20 µg/mL 1:50-200 Immunocytochemistry: 5-20 µg/mL 1:50-200 Optimal working dilutions must be determined by end user.
Comment:	The thermal stability is described by the loss rate. The loss rate was determined by accelerated thermal degradation test, that is, incubate the protein at 37°C for 48h, and no obvious degradation and precipitation were observed. The loss rate is less than 5% within the expiration date under appropriate storage condition.
Restrictions:	For Research Use only

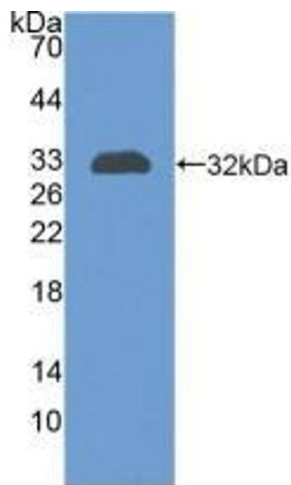
Handling

Format:	Liquid
Buffer:	0.01M PBS, pH 7.4, containing 0.05 % Proclin-300, 50 % glycerol.
Preservative:	ProClin
Precaution of Use:	This product contains ProClin: a POISONOUS AND HAZARDOUS SUBSTANCE which should be handled by trained staff only.
Storage:	4 °C, -20 °C
Storage Comment:	Store at 4°C for frequent use. Stored at -20°C in a manual defrost freezer for two year without detectable loss of activity. Avoid repeated freeze-thaw cycles.
Expiry Date:	24 months



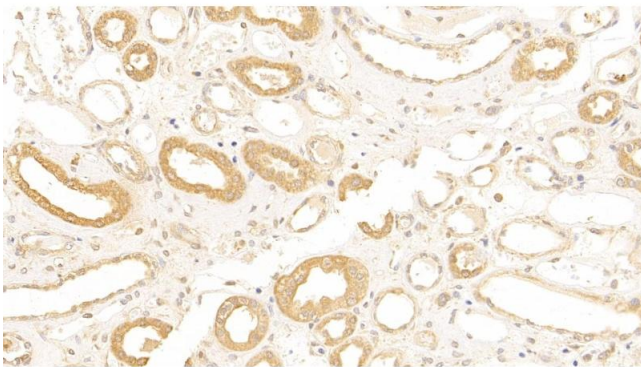
Immunohistochemistry

Image 1. Detection of CR1 in Human Tonsil Tissue using Polyclonal Antibody to Complement Receptor 1, Erythrocyte (CR1)



Western Blotting

Image 2. Detection of Recombinant CR1, Human using Polyclonal Antibody to Complement Receptor 1, Erythrocyte (CR1)



Immunohistochemistry

Image 3. Detection of CR1 in Human Kidney Tissue using Polyclonal Antibody to Complement Receptor 1, Erythrocyte (CR1)

Please check the [product details page](#) for more images. Overall 7 images are available for ABIN7433177.