

Datasheet for ABIN7433225
anti-Clusterin antibody (AA 227-448)[Go to Product page](#)

5 Images

Overview

Quantity:	100 µL
Target:	Clusterin (CLU)
Binding Specificity:	AA 227-448
Reactivity:	Mouse
Host:	Rabbit
Clonality:	Polyclonal
Conjugate:	This Clusterin antibody is un-conjugated
Application:	Western Blotting (WB), Immunohistochemistry (IHC), Immunoprecipitation (IP), Immunocytochemistry (ICC)

Product Details

Purpose:	Polyclonal Antibody to Clusterin (CLU)
Immunogen:	Recombinant Clusterin (CLU) corresponding to Ser227~Glu448 with N-terminal His Tag
Isotype:	IgG
Specificity:	The antibody is a rabbit polyclonal antibody raised against CLU. It has been selected for its ability to recognize CLU in immunohistochemical staining and western blotting.
Cross-Reactivity:	Rat
Purification:	Antigen-specific affinity chromatography followed by Protein A affinity chromatography

Target Details

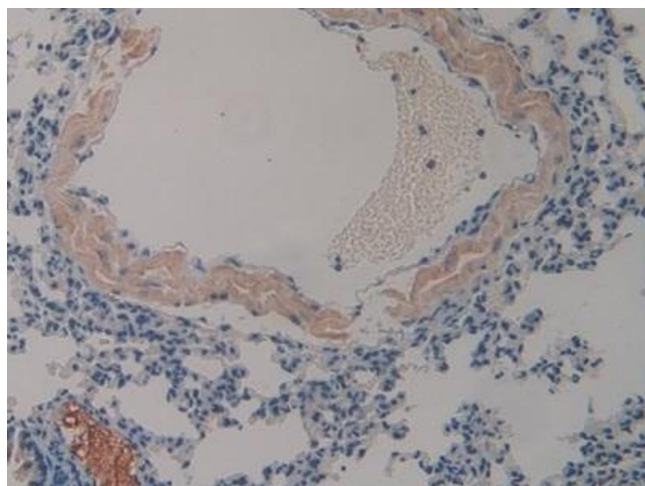
Target:	Clusterin (CLU)
Alternative Name:	Clusterin (CLU Products)
Background:	CLU, TRPM2, KUB1, CLI, APOJ, SGP2, AAG4, APO-J, SP-40, Apolipoprotein J, Complement Lysis Inhibitor, 40,Sulfated Glycoprotein 2, Testosterone-Repressed Prostate Message 2
Pathways:	Apoptosis , Negative Regulation of intrinsic apoptotic Signaling

Application Details

Application Notes:	Western blotting: 0.5-2 µg/mL Immunohistochemistry: 5-20 µg/mL Immunocytochemistry: 5-20 µg/mL Optimal working dilutions must be determined by end user.
Comment:	The thermal stability is described by the loss rate. The loss rate was determined by accelerated thermal degradation test, that is, incubate the protein at 37°C for 48h, and no obvious degradation and precipitation were observed. The loss rate is less than 5% within the expiration date under appropriate storage condition.
Restrictions:	For Research Use only

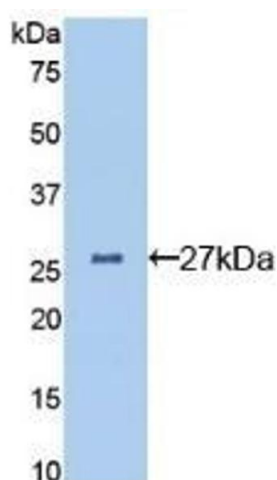
Handling

Format:	Liquid
Buffer:	0.01M PBS, pH 7.4, containing 0.05 % Proclin-300, 50 % glycerol.
Preservative:	ProClin
Precaution of Use:	This product contains ProClin: a POISONOUS AND HAZARDOUS SUBSTANCE which should be handled by trained staff only.
Storage:	4 °C, -20 °C
Storage Comment:	Store at 4°C for frequent use. Stored at -20°C in a manual defrost freezer for two year without detectable loss of activity. Avoid repeated freeze-thaw cycles.
Expiry Date:	24 months



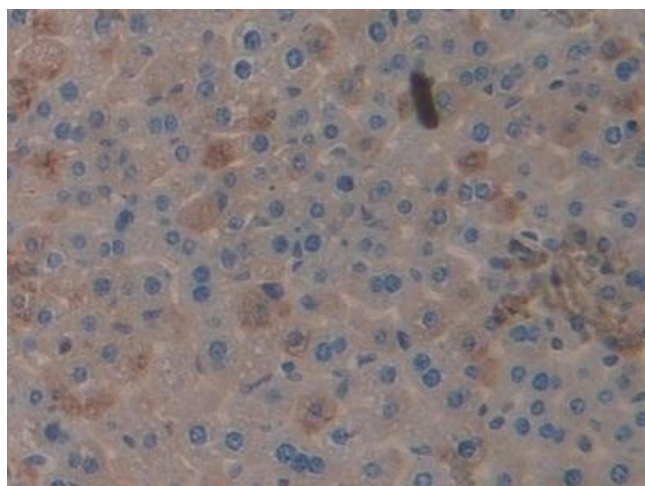
Immunohistochemistry

Image 1. Detection of CLU in Mouse Lung Tissue using Polyclonal Antibody to Clusterin (CLU)



Western Blotting

Image 2. Detection of Recombinant CLU, Mouse using Polyclonal Antibody to Clusterin (CLU)



Immunohistochemistry

Image 3. Detection of CLU in Mouse Liver Tissue using Polyclonal Antibody to Clusterin (CLU)

Please check the [product details page](#) for more images. Overall 5 images are available for ABIN7433225.