

Datasheet for ABIN7433297  
**anti-BPI antibody (AA 140-250)**

## 3 Images

[Go to Product page](#)

## Overview

Quantity:	100 µL
Target:	BPI
Binding Specificity:	AA 140-250
Reactivity:	Human
Host:	Rabbit
Clonality:	Polyclonal
Conjugate:	This BPI antibody is un-conjugated
Application:	Western Blotting (WB), Immunohistochemistry (IHC), Immunoprecipitation (IP), Immunocytochemistry (ICC)

## Product Details

Purpose:	Polyclonal Antibody to Bactericidal/Permeability Increasing Protein (BPI)
Immunogen:	Recombinant Bactericidal/Permeability Increasing Protein (BPI) corresponding to Glu140~Thr250 with N-terminal His and GST Tag
Isotype:	IgG
Specificity:	The antibody is a rabbit polyclonal antibody raised against BPI. It has been selected for its ability to recognize BPI in immunohistochemical staining and western blotting.
Purification:	Antigen-specific affinity chromatography followed by Protein A affinity chromatography

## Target Details

Target:	BPI
---------	-----

## Target Details

Alternative Name: Bactericidal/Permeability Increasing Protein ([BPI Products](#))

Background: CAP 57

## Application Details

Application Notes: Western blotting: 0.5-3 µg/mL  
Immunohistochemistry: 5-30 µg/mL  
Immunocytochemistry: 5-30 µg/mL  
Optimal working dilutions must be determined by end user.

Comment: The thermal stability is described by the loss rate. The loss rate was determined by accelerated thermal degradation test, that is, incubate the protein at 37°C for 48h, and no obvious degradation and precipitation were observed. The loss rate is less than 5% within the expiration date under appropriate storage condition.

Restrictions: For Research Use only

## Handling

Format: Liquid

Buffer: 0.01M PBS, pH 7.4, containing 0.05 % Proclin-300, 50 % glycerol.

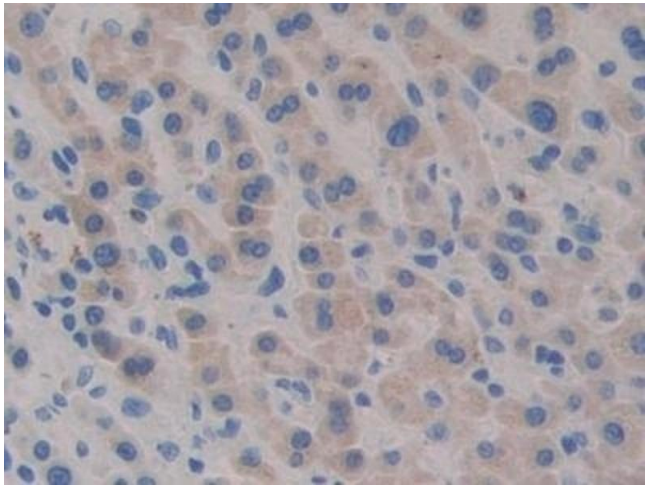
Preservative: ProClin

Precaution of Use: This product contains ProClin: a POISONOUS AND HAZARDOUS SUBSTANCE which should be handled by trained staff only.

Storage: 4 °C,-20 °C

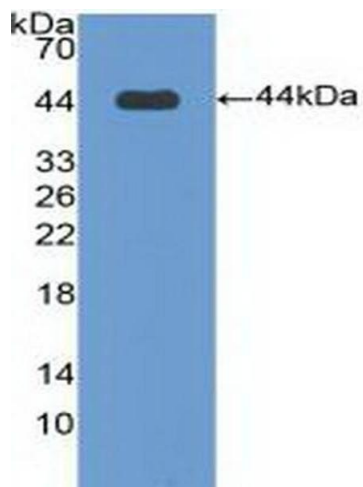
Storage Comment: Store at 4°C for frequent use. Stored at -20°C in a manual defrost freezer for two year without detectable loss of activity. Avoid repeated freeze-thaw cycles.

Expiry Date: 24 months



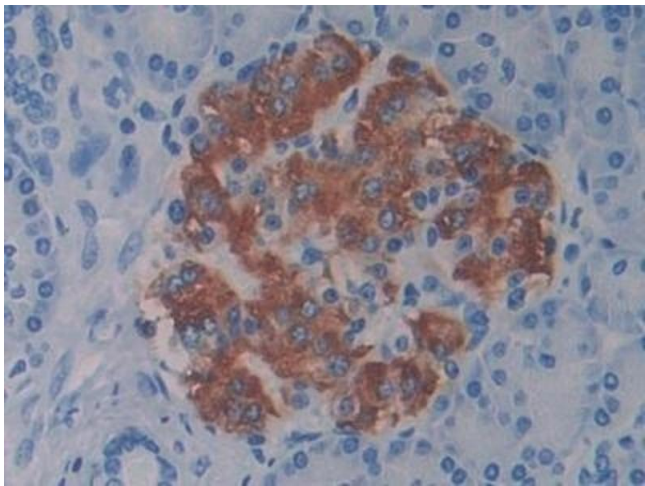
#### Immunohistochemistry

**Image 1.** Detection of BPI in Human Liver Tissue using Polyclonal Antibody to Bactericidal/Permeability Increasing Protein (BPI)



#### Western Blotting

**Image 2.** Detection of Recombinant BPI, Human using Polyclonal Antibody to Bactericidal/Permeability Increasing Protein (BPI)



#### Immunohistochemistry

**Image 3.** Detection of BPI in Human Pancreas Tissue using Polyclonal Antibody to Bactericidal/Permeability Increasing Protein (BPI)