

Datasheet for ABIN7433351
anti-PPY antibody (AA 30-87)[Go to Product page](#)

2 Images

Overview

Quantity:	100 µL
Target:	PPY
Binding Specificity:	AA 30-87
Reactivity:	Human
Host:	Rabbit
Clonality:	Polyclonal
Conjugate:	This PPY antibody is un-conjugated
Application:	Western Blotting (WB), Immunohistochemistry (IHC), Immunoprecipitation (IP), Immunocytochemistry (ICC)

Product Details

Purpose:	Polyclonal Antibody to Pancreatic Polypeptide (PP)
Immunogen:	Recombinant Pancreatic Polypeptide (PP) corresponding to Ala30~Pro87 with N-terminal His and GST Tag
Isotype:	IgG
Specificity:	The antibody is a rabbit polyclonal antibody raised against PP. It has been selected for its ability to recognize PP in immunohistochemical staining and western blotting.
Purification:	Antigen-specific affinity chromatography followed by Protein A affinity chromatography

Target Details

Target:	PPY
---------	-----

Target Details

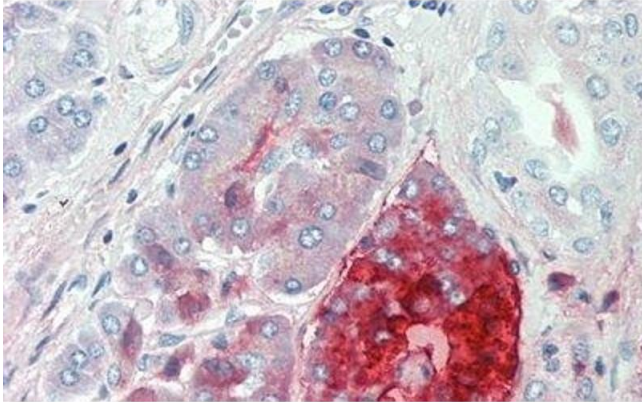
Alternative Name:	Pancreatic Polypeptide (PPY Products)
Background:	PPY, PNP, Pancreatic Polypeptide Y, Obinepitide, Pancreatic icosapeptide, Pancreatic prohormone
Pathways:	Feeding Behaviour

Application Details

Application Notes:	Western blotting: 0.5-2 µg/mL 1:500-2000 Immunohistochemistry: 5-20 µg/mL 1:50-200 Immunocytochemistry: 5-20 µg/mL 1:50-200 Optimal working dilutions must be determined by end user.
Comment:	The thermal stability is described by the loss rate. The loss rate was determined by accelerated thermal degradation test, that is, incubate the protein at 37°C for 48h, and no obvious degradation and precipitation were observed. The loss rate is less than 5% within the expiration date under appropriate storage condition.
Restrictions:	For Research Use only

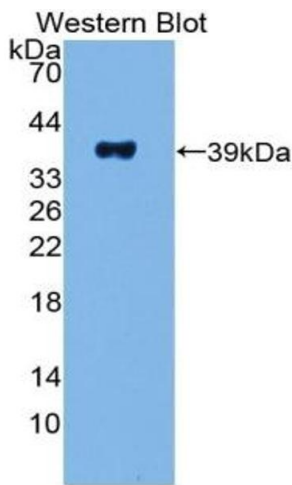
Handling

Format:	Liquid
Buffer:	0.01M PBS, pH 7.4, containing 0.05 % Proclin-300, 50 % glycerol.
Preservative:	ProClin
Precaution of Use:	This product contains ProClin: a POISONOUS AND HAZARDOUS SUBSTANCE which should be handled by trained staff only.
Storage:	4 °C, -20 °C
Storage Comment:	Store at 4°C for frequent use. Stored at -20°C in a manual defrost freezer for two year without detectable loss of activity. Avoid repeated freeze-thaw cycles.
Expiry Date:	24 months



Immunohistochemistry

Image 1. Detection of PP in Human Pancreas Tissue using Polyclonal Antibody to Pancreatic Polypeptide (PP)



Western Blotting

Image 2. Detection of Recombinant PP, Human using Polyclonal Antibody to Pancreatic Polypeptide (PP)