



[Go to Product page](#)

Datasheet for ABIN7433402

anti-Dopamine Receptor d1 antibody (AA 338-446)

5 Images

Overview

Quantity:	100 µL
Target:	Dopamine Receptor d1 (DRD1)
Binding Specificity:	AA 338-446
Reactivity:	Human
Host:	Rabbit
Clonality:	Polyclonal
Conjugate:	This Dopamine Receptor d1 antibody is un-conjugated
Application:	Western Blotting (WB), Immunohistochemistry (IHC), Immunocytochemistry (ICC), Immunoprecipitation (IP)

Product Details

Purpose:	Polyclonal Antibody to Dopamine Receptor D1 (DRD1)
Immunogen:	Recombinant Dopamine Receptor D1 (DRD1) corresponding to Arg338~Thr446 with N-terminal His Tag
Isotype:	IgG
Specificity:	The antibody is a rabbit polyclonal antibody raised against DRD1. It has been selected for its ability to recognize DRD1 in immunohistochemical staining and western blotting.
Cross-Reactivity:	Mouse, Rat
Purification:	Antigen-specific affinity chromatography followed by Protein A affinity chromatography

Target Details

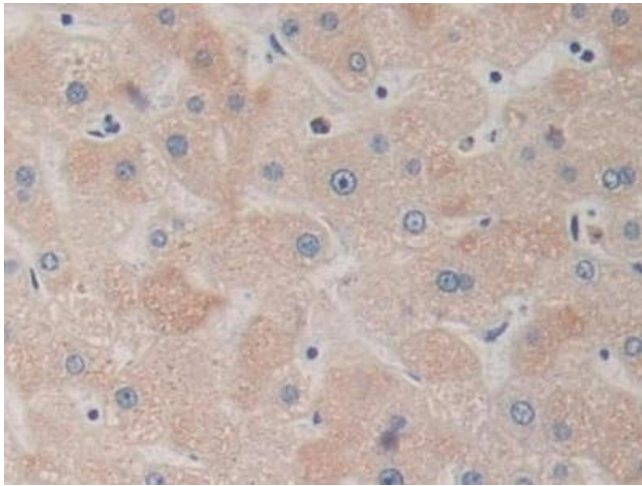
Target:	Dopamine Receptor d1 (DRD1)
Alternative Name:	Dopamine Receptor D1 (DRD1 Products)
Background:	DR-D1, D1R, DADR, DRD1A
Pathways:	cAMP Metabolic Process , Inositol Metabolic Process , Protein targeting to Nucleus , Feeding Behaviour , Smooth Muscle Cell Migration , Regulation of long-term Neuronal Synaptic Plasticity

Application Details

Application Notes:	Western blotting: 0.5-2 µg/mL Immunohistochemistry: 5-20 µg/mL Immunocytochemistry: 5-20 µg/mL Optimal working dilutions must be determined by end user.
Comment:	The thermal stability is described by the loss rate. The loss rate was determined by accelerated thermal degradation test, that is, incubate the protein at 37°C for 48h, and no obvious degradation and precipitation were observed. The loss rate is less than 5% within the expiration date under appropriate storage condition.
Restrictions:	For Research Use only

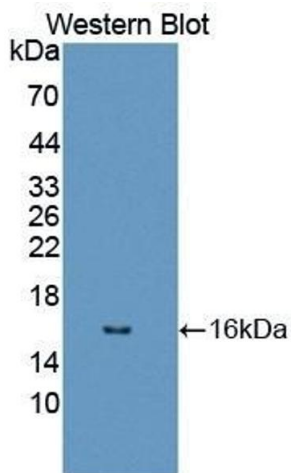
Handling

Format:	Liquid
Buffer:	0.01M PBS, pH 7.4, containing 0.05 % Proclin-300, 50 % glycerol.
Preservative:	ProClin
Precaution of Use:	This product contains ProClin: a POISONOUS AND HAZARDOUS SUBSTANCE which should be handled by trained staff only.
Storage:	4 °C,-20 °C
Storage Comment:	Store at 4°C for frequent use. Stored at -20°C in a manual defrost freezer for two year without detectable loss of activity. Avoid repeated freeze-thaw cycles.
Expiry Date:	24 months



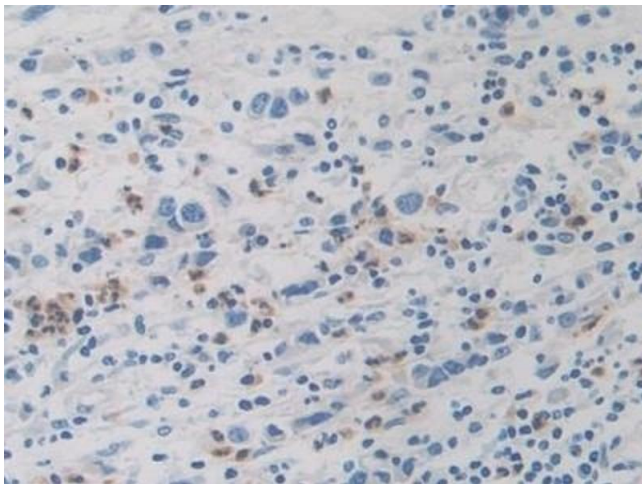
Immunohistochemistry

Image 1. Detection of DRD1 in Human Liver Tissue using Polyclonal Antibody to Dopamine Receptor D1 (DRD1)



Western Blotting

Image 2. Detection of Recombinant DRD1, Human using Polyclonal Antibody to Dopamine Receptor D1 (DRD1)



Immunohistochemistry

Image 3. Detection of DRD1 in Human Stomach cancer Tissue using Polyclonal Antibody to Dopamine Receptor D1 (DRD1)

Please check the [product details page](#) for more images. Overall 5 images are available for ABIN7433402.