

Datasheet for ABIN7433429
anti-SLPI antibody (AA 20-131)

5 Images

[Go to Product page](#)

Overview

Quantity:	100 µL
Target:	SLPI
Binding Specificity:	AA 20-131
Reactivity:	Mouse
Host:	Rabbit
Clonality:	Polyclonal
Conjugate:	This SLPI antibody is un-conjugated
Application:	Western Blotting (WB), Immunohistochemistry (IHC), Immunoprecipitation (IP), Immunocytochemistry (ICC)

Product Details

Purpose:	Polyclonal Antibody to Secretory Leukocyte Peptidase Inhibitor (SLPI)
Immunogen:	Recombinant Secretory Leukocyte Peptidase Inhibitor (SLPI) corresponding to Pro20~Met131 with N-terminal His Tag
Isotype:	IgG
Specificity:	The antibody is a rabbit polyclonal antibody raised against SLPI. It has been selected for its ability to recognize SLPI in immunohistochemical staining and western blotting.
Purification:	Antigen-specific affinity chromatography followed by Protein A affinity chromatography

Target Details

Target:	SLPI
---------	------

Target Details

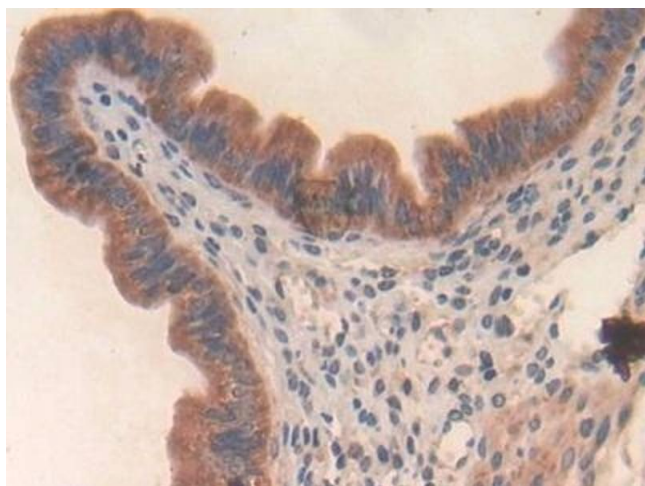
Alternative Name:	Secretory Leukocyte Peptidase Inhibitor (SLPI Products)
Background:	ALK1, ALP, MPI, BLPI, HUSI, HUSI-I, WAP4, WFDC4, Antileukoproteinase, Seminal proteinase inhibitor, Mucus proteinase inhibitor, WAP four-disulfide core domain protein 4

Application Details

Application Notes:	Western blotting: 0.5-2 µg/mL Immunohistochemistry: 5-20 µg/mL Immunocytochemistry: 5-20 µg/mL Optimal working dilutions must be determined by end user.
Comment:	The thermal stability is described by the loss rate. The loss rate was determined by accelerated thermal degradation test, that is, incubate the protein at 37°C for 48h, and no obvious degradation and precipitation were observed. The loss rate is less than 5% within the expiration date under appropriate storage condition.
Restrictions:	For Research Use only

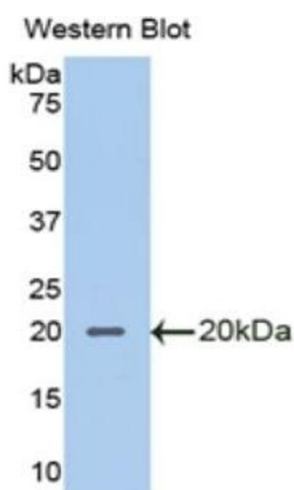
Handling

Format:	Liquid
Buffer:	0.01M PBS, pH 7.4, containing 0.05 % Proclin-300, 50 % glycerol.
Preservative:	ProClin
Precaution of Use:	This product contains ProClin: a POISONOUS AND HAZARDOUS SUBSTANCE which should be handled by trained staff only.
Storage:	4 °C, -20 °C
Storage Comment:	Store at 4°C for frequent use. Stored at -20°C in a manual defrost freezer for two year without detectable loss of activity. Avoid repeated freeze-thaw cycles.
Expiry Date:	24 months



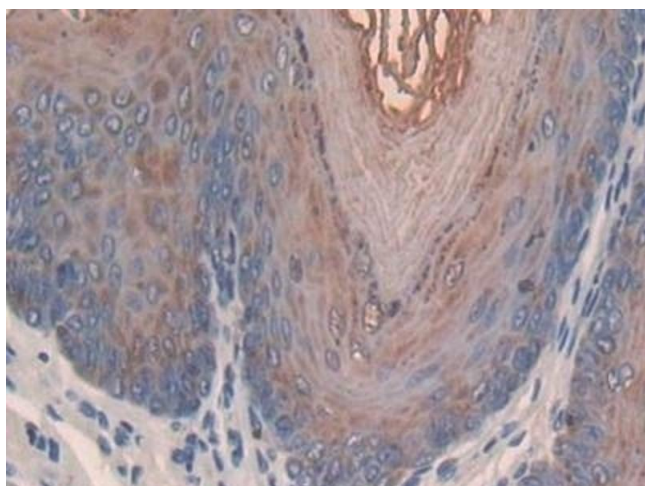
Immunohistochemistry

Image 1. Detection of SLPI in Mouse Uterus Tissue using Polyclonal Antibody to Secretory Leukocyte Peptidase Inhibitor (SLPI)



Western Blotting

Image 2. Detection of Recombinant SLPI, Mouse using Polyclonal Antibody to Secretory Leukocyte Peptidase Inhibitor (SLPI)



Immunohistochemistry

Image 3. Detection of SLPI in Mouse Esophagus Tissue using Polyclonal Antibody to Secretory Leukocyte Peptidase Inhibitor (SLPI)

Please check the [product details page](#) for more images. Overall 5 images are available for ABIN7433429.