

Datasheet for ABIN7433447
anti-PCOLCE antibody (AA 36-468)

3 Images

[Go to Product page](#)

Overview

Quantity:	100 µL
Target:	PCOLCE
Binding Specificity:	AA 36-468
Reactivity:	Mouse
Host:	Rabbit
Clonality:	Polyclonal
Conjugate:	This PCOLCE antibody is un-conjugated
Application:	Western Blotting (WB), Immunohistochemistry (IHC), Immunoprecipitation (IP), Immunocytochemistry (ICC)

Product Details

Purpose:	Polyclonal Antibody to Procollagen C-Endopeptidase Enhancer (PCOLCE)
Immunogen:	Recombinant Procollagen C-Endopeptidase Enhancer (PCOLCE) corresponding to Cys36~Ala468 (Accession # Q61398)
Isotype:	IgG
Specificity:	The antibody is a rabbit polyclonal antibody raised against PCOLCE. It has been selected for its ability to recognize PCOLCE in immunohistochemical staining and western blotting.
Cross-Reactivity:	Rat
Purification:	Antigen-specific affinity chromatography followed by Protein A affinity chromatography

Target Details

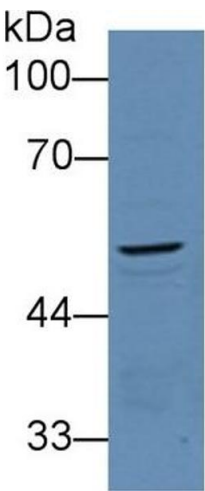
Target:	PCOLCE
Alternative Name:	Procollagen C-Endopeptidase Enhancer (PCOLCE Products)
Background:	PCPE1, PCPE, Procollagen Type 1 COOH-Terminal Proteinase Enhancer, Procollagen C Endopeptidase Enhancer, Type I procollagen COOH-terminal proteinase enhancer, Procollagen C Proteinase Enhancer 1

Application Details

Application Notes:	Western blotting: 0.5-2 µg/mL 1:150-600 Immunohistochemistry: 5-20 µg/mL 1:15-60 Immunocytochemistry: 5-20 µg/mL 1:15-60 Optimal working dilutions must be determined by end user.
Comment:	The thermal stability is described by the loss rate. The loss rate was determined by accelerated thermal degradation test, that is, incubate the protein at 37°C for 48h, and no obvious degradation and precipitation were observed. The loss rate is less than 5% within the expiration date under appropriate storage condition.
Restrictions:	For Research Use only

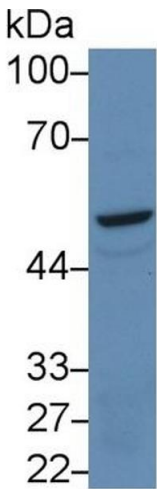
Handling

Format:	Liquid
Buffer:	0.01M PBS, pH 7.4, containing 0.05 % Proclin-300, 50 % glycerol.
Preservative:	ProClin
Precaution of Use:	This product contains ProClin: a POISONOUS AND HAZARDOUS SUBSTANCE which should be handled by trained staff only.
Storage:	4 °C,-20 °C
Storage Comment:	Store at 4°C for frequent use. Stored at -20°C in a manual defrost freezer for two year without detectable loss of activity. Avoid repeated freeze-thaw cycles.
Expiry Date:	24 months



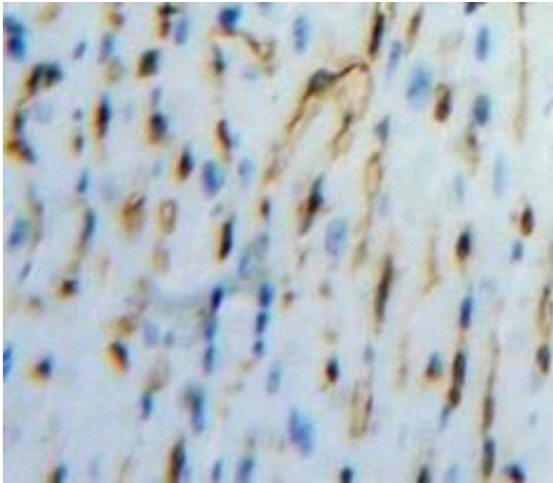
Western Blotting

Image 1. Detection of PCOLCE in Mouse Kidney lysate using Polyclonal Antibody to Procollagen C-Endopeptidase Enhancer (PCOLCE)



Western Blotting

Image 2. Detection of Recombinant PCPE1, Mouse using Polyclonal Antibody to Procollagen C-Endopeptidase Enhancer (PCOLCE)



Immunohistochemistry

Image 3. #VALUE!