

Datasheet for ABIN7433483
anti-Involucrin antibody (AA 36-152)[Go to Product page](#)

2 Images

Overview

| | |
|----------------------|--|
| Quantity: | 100 µL |
| Target: | Involucrin (IVL) |
| Binding Specificity: | AA 36-152 |
| Reactivity: | Human |
| Host: | Rabbit |
| Clonality: | Polyclonal |
| Conjugate: | This Involucrin antibody is un-conjugated |
| Application: | Western Blotting (WB), Immunohistochemistry (IHC), Immunoprecipitation (IP), Immunocytochemistry (ICC) |

Product Details

| | |
|---------------|--|
| Purpose: | Polyclonal Antibody to Involucrin (INV) |
| Immunogen: | Recombinant Involucrin (INV) corresponding to Gln36~Leu152 with N-terminal His Tag |
| Isotype: | IgG |
| Specificity: | The antibody is a rabbit polyclonal antibody raised against INV. It has been selected for its ability to recognize INV in immunohistochemical staining and western blotting. |
| Purification: | Antigen-specific affinity chromatography followed by Protein A affinity chromatography |

Target Details

| | |
|---------|------------------|
| Target: | Involucrin (IVL) |
|---------|------------------|

Target Details

Alternative Name: Involucrin ([IVL Products](#))

Background: IVL

Application Details

Application Notes: Western blotting: 0.5-3 µg/mL
Immunohistochemistry: 5-30 µg/mL
Immunocytochemistry: 5-30 µg/mL
Optimal working dilutions must be determined by end user.

Comment: The thermal stability is described by the loss rate. The loss rate was determined by accelerated thermal degradation test, that is, incubate the protein at 37°C for 48h, and no obvious degradation and precipitation were observed. The loss rate is less than 5% within the expiration date under appropriate storage condition.

Restrictions: For Research Use only

Handling

Format: Liquid

Buffer: 0.01M PBS, pH 7.4, containing 0.05 % Proclin-300, 50 % glycerol.

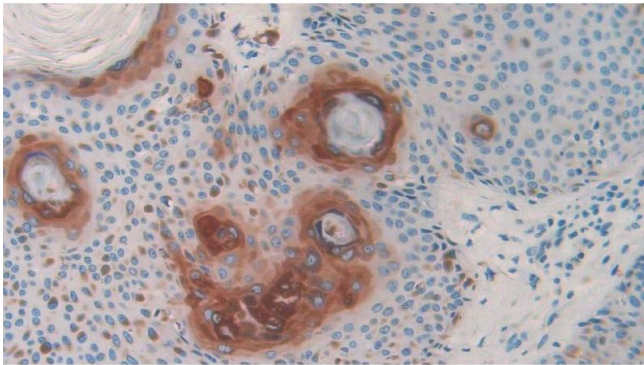
Preservative: ProClin

Precaution of Use: This product contains ProClin: a POISONOUS AND HAZARDOUS SUBSTANCE which should be handled by trained staff only.

Storage: 4 °C,-20 °C

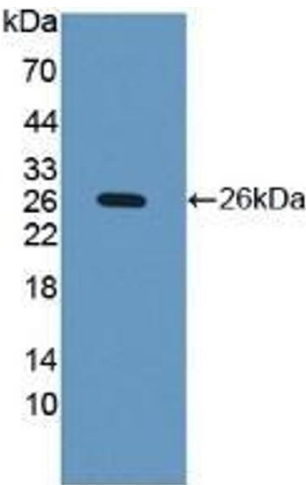
Storage Comment: Store at 4°C for frequent use. Stored at -20°C in a manual defrost freezer for two year without detectable loss of activity. Avoid repeated freeze-thaw cycles.

Expiry Date: 24 months



Immunohistochemistry

Image 1. Detection of INV in Human Skin Tissue using Polyclonal Antibody to Involucrin (INV)



Western Blotting

Image 2. Detection of Recombinant iNV, Human using Polyclonal Antibody to Involucrin (INV)