

Datasheet for ABIN7433492
anti-Elastin antibody (AA 266-443)

3 Images

[Go to Product page](#)

Overview

Quantity:	100 µL
Target:	Elastin (ELN)
Binding Specificity:	AA 266-443
Reactivity:	Mouse
Host:	Rabbit
Clonality:	Polyclonal
Conjugate:	This Elastin antibody is un-conjugated
Application:	Western Blotting (WB), Immunohistochemistry (IHC), Immunoprecipitation (IP), Immunocytochemistry (ICC)

Product Details

Purpose:	Polyclonal Antibody to Elastin (ELN)
Immunogen:	Recombinant Elastin (ELN) corresponding to Pro266~Gly443 with N-terminal His and GST Tag
Isotype:	IgG
Specificity:	The antibody is a rabbit polyclonal antibody raised against ELN. It has been selected for its ability to recognize ELN in immunohistochemical staining and western blotting.
Cross-Reactivity:	Rat
Purification:	Antigen-specific affinity chromatography followed by Protein A affinity chromatography

Target Details

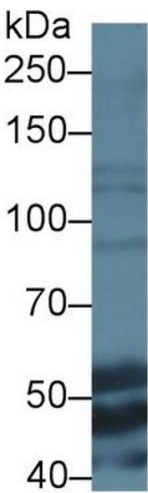
Target:	Elastin (ELN)
Alternative Name:	Elastin (ELN Products)
Background:	WBS, WS, SVAS, Tropoelastin, Supravalvular Aortic Stenosis, Williams-Beuren Syndrome
Pathways:	Regulation of Actin Filament Polymerization

Application Details

Application Notes:	Western blotting: 0.5-2 µg/mL Immunohistochemistry: 5-20 µg/mL Immunocytochemistry: 5-20 µg/mL Optimal working dilutions must be determined by end user.
Comment:	The thermal stability is described by the loss rate. The loss rate was determined by accelerated thermal degradation test, that is, incubate the protein at 37°C for 48h, and no obvious degradation and precipitation were observed. The loss rate is less than 5% within the expiration date under appropriate storage condition.
Restrictions:	For Research Use only

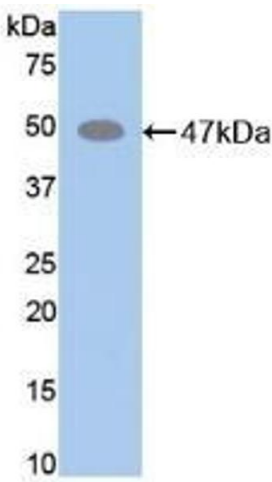
Handling

Format:	Liquid
Buffer:	0.01M PBS, pH 7.4, containing 0.05 % Proclin-300, 50 % glycerol.
Preservative:	ProClin
Precaution of Use:	This product contains ProClin: a POISONOUS AND HAZARDOUS SUBSTANCE which should be handled by trained staff only.
Storage:	4 °C, -20 °C
Storage Comment:	Store at 4°C for frequent use. Stored at -20°C in a manual defrost freezer for two year without detectable loss of activity. Avoid repeated freeze-thaw cycles.
Expiry Date:	24 months



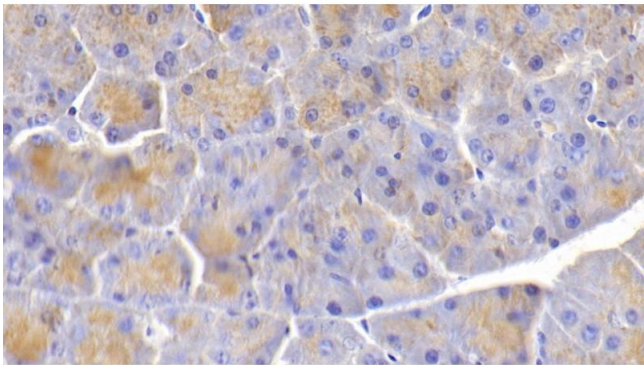
Western Blotting

Image 1. Detection of ELN in Mouse Liver lysate using Polyclonal Antibody to Elastin (ELN)



Western Blotting

Image 2. Detection of Recombinant ELN, Mouse using Polyclonal Antibody to Elastin (ELN)



Immunohistochemistry

Image 3. Detection of ELN in Mouse Pancreas Tissue using Polyclonal Antibody to Elastin (ELN)