

Datasheet for ABIN7433621  
**anti-DBH antibody (AA 335-571)**

## 2 Images

[Go to Product page](#)

## Overview

Quantity:	100 µL
Target:	DBH
Binding Specificity:	AA 335-571
Reactivity:	Human
Host:	Rabbit
Clonality:	Polyclonal
Conjugate:	This DBH antibody is un-conjugated
Application:	Western Blotting (WB), Immunohistochemistry (IHC), Immunocytochemistry (ICC), Immunoprecipitation (IP)

## Product Details

Purpose:	Polyclonal Antibody to Dopamine Beta Hydroxylase (DbH)
Immunogen:	Recombinant Dopamine Beta Hydroxylase (DbH) corresponding to His335~Val571 with N-terminal His Tag
Isotype:	IgG
Specificity:	The antibody is a rabbit polyclonal antibody raised against DbH. It has been selected for its ability to recognize DbH in immunohistochemical staining and western blotting.
Purification:	Antigen-specific affinity chromatography followed by Protein A affinity chromatography

## Target Details

Target:	DBH
---------	-----

## Target Details

Alternative Name: Dopamine Beta Hydroxylase ([DBH Products](#))

Background: DBM, Dopamine Beta-Monooxygenase

Pathways: [Carbohydrate Homeostasis](#)

## Application Details

Application Notes: Western blotting: 0.5-2 µg/mL Immunohistochemistry: 5-20 µg/mL Immunocytochemistry: 5-20 µg/mL Optimal working dilutions must be determined by end user.

Comment: The thermal stability is described by the loss rate. The loss rate was determined by accelerated thermal degradation test, that is, incubate the protein at 37°C for 48h, and no obvious degradation and precipitation were observed. The loss rate is less than 5% within the expiration date under appropriate storage condition.

Restrictions: For Research Use only

## Handling

Format: Liquid

Buffer: PBS, pH 7.4, containing 0.02 % Sodium azide, 50 % glycerol.

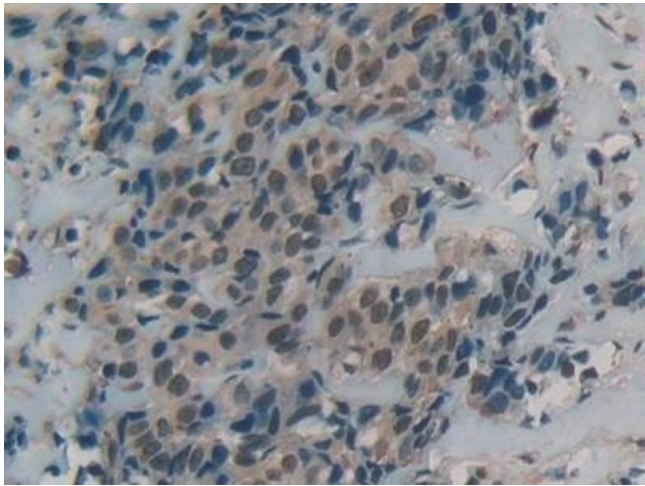
Preservative: Sodium azide

Precaution of Use: This product contains Sodium azide: a POISONOUS AND HAZARDOUS SUBSTANCE which should be handled by trained staff only.

Storage: 4 °C, -20 °C

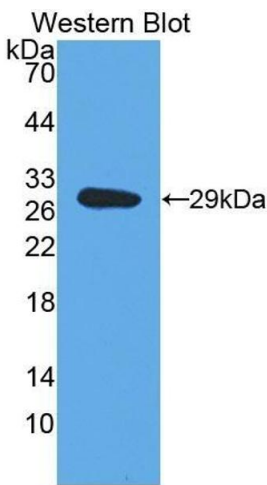
Storage Comment: Store at 4°C for frequent use. Stored at -20°C in a manual defrost freezer for two year without detectable loss of activity. Avoid repeated freeze-thaw cycles.

Expiry Date: 24 months



#### Immunohistochemistry

**Image 1.** Detection of DbH in Human Breast cancer Tissue using Polyclonal Antibody to Dopamine Beta Hydroxylase (DbH)



#### Western Blotting

**Image 2.** Detection of Recombinant DbH, Human using Polyclonal Antibody to Dopamine Beta Hydroxylase (DbH)