

Datasheet for ABIN7433642
anti-LGALS13 antibody (AA 1-139)

5 Images

[Go to Product page](#)

Overview

Quantity:	100 µL
Target:	LGALS13
Binding Specificity:	AA 1-139
Reactivity:	Human
Host:	Rabbit
Clonality:	Polyclonal
Conjugate:	This LGALS13 antibody is un-conjugated
Application:	Immunohistochemistry (IHC), Western Blotting (WB), Immunoprecipitation (IP), Immunocytochemistry (ICC)

Product Details

Purpose:	Polyclonal Antibody to Placental Protein 13 (PP13)
Immunogen:	Recombinant Placental Protein 13 (PP13) corresponding to Met1~Asn139 with N-terminal His and GST Tag
Isotype:	IgG
Specificity:	The antibody is a rabbit polyclonal antibody raised against PP13. It has been selected for its ability to recognize PP13 in immunohistochemical staining and western blotting.
Cross-Reactivity:	Mouse
Purification:	Antigen-specific affinity chromatography followed by Protein A affinity chromatography

Target Details

Target:	LGALS13
Alternative Name:	Placental Protein 13 (LGALS13 Products)
Background:	LGALS13, PLAC8, PP13, GAL13, Galectin 13, Galactoside-Binding Soluble Lectin 13, Placental tissue protein 13

Application Details

Application Notes:	Western blotting: 0.2-2 µg/mL 1:250-2500 Immunohistochemistry: 5-20 µg/mL 1:25-100 Immunocytochemistry: 5-20 µg/mL 1:25-100 Optimal working dilutions must be determined by end user.
Comment:	The thermal stability is described by the loss rate. The loss rate was determined by accelerated thermal degradation test, that is, incubate the protein at 37°C for 48h, and no obvious degradation and precipitation were observed. The loss rate is less than 5% within the expiration date under appropriate storage condition.
Restrictions:	For Research Use only

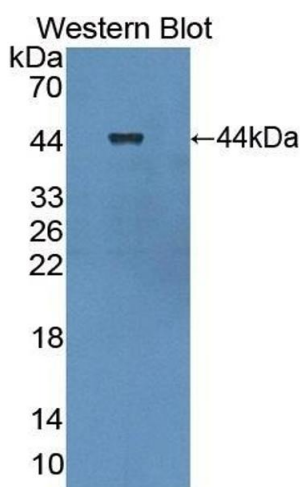
Handling

Format:	Liquid
Buffer:	PBS, pH 7.4, containing 0.02 % Sodium azide, 50 % glycerol.
Preservative:	Sodium azide
Precaution of Use:	This product contains Sodium azide: a POISONOUS AND HAZARDOUS SUBSTANCE which should be handled by trained staff only.
Storage:	4 °C, -20 °C
Storage Comment:	Store at 4°C for frequent use. Stored at -20°C in a manual defrost freezer for two year without detectable loss of activity. Avoid repeated freeze-thaw cycles.
Expiry Date:	24 months



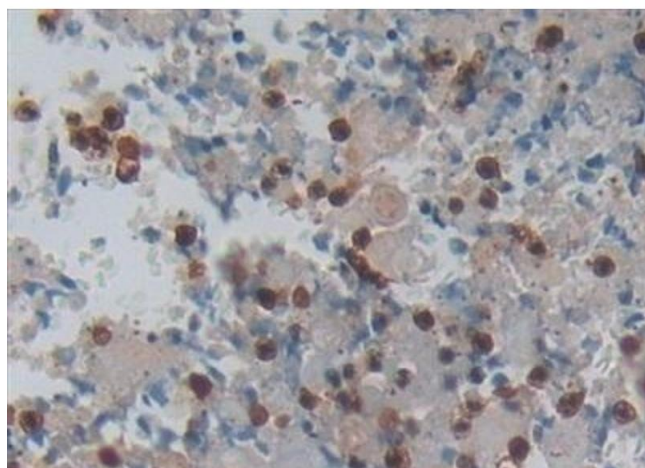
Western Blotting

Image 1. Detection of PP13 in Mouse Kidney lysate using Polyclonal Antibody to Placental Protein 13 (PP13)



Western Blotting

Image 2. Detection of Recombinant PP13, Human using Polyclonal Antibody to Placental Protein 13 (PP13)



Immunohistochemistry

Image 3. Detection of PP13 in Human Lung cancer Tissue using Polyclonal Antibody to Placental Protein 13 (PP13)

Please check the [product details page](#) for more images. Overall 5 images are available for ABIN7433642.