

Datasheet for ABIN7433708
anti-LUM antibody (AA 19-338)[Go to Product page](#)

3 Images

Overview

Quantity:	100 µL
Target:	LUM
Binding Specificity:	AA 19-338
Reactivity:	Human
Host:	Rabbit
Clonality:	Polyclonal
Conjugate:	This LUM antibody is un-conjugated
Application:	Western Blotting (WB), Immunohistochemistry (IHC), Immunoprecipitation (IP), Immunocytochemistry (ICC)

Product Details

Purpose:	Polyclonal Antibody to Lumican (LUM)
Immunogen:	Recombinant Lumican (LUM) corresponding to Gln19~Asn338 (Accession # P51884)
Isotype:	IgG
Specificity:	The antibody is a rabbit polyclonal antibody raised against LUM. It has been selected for its ability to recognize LUM in immunohistochemical staining and western blotting.
Purification:	Antigen-specific affinity chromatography followed by Protein A affinity chromatography

Target Details

Target:	LUM
---------	-----

Target Details

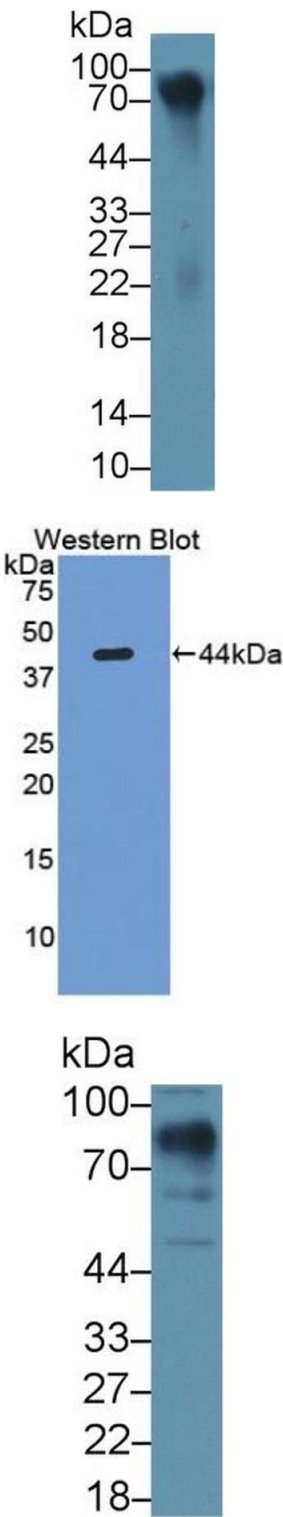
Alternative Name:	Lumican (LUM Products)
Background:	LDC, SLRR2D, KSPG lumican, Keratan sulfate proteoglycan lumican
Pathways:	Glycosaminoglycan Metabolic Process

Application Details

Application Notes:	Western blotting: 0.5-2 µg/mL Immunohistochemistry: 5-20 µg/mL Immunocytochemistry: 5-20 µg/mL Optimal working dilutions must be determined by end user.
Comment:	The thermal stability is described by the loss rate. The loss rate was determined by accelerated thermal degradation test, that is, incubate the protein at 37°C for 48h, and no obvious degradation and precipitation were observed. The loss rate is less than 5% within the expiration date under appropriate storage condition.
Restrictions:	For Research Use only

Handling

Format:	Liquid
Buffer:	PBS, pH 7.4, containing 0.02 % Sodium azide, 50 % glycerol.
Preservative:	Sodium azide
Precaution of Use:	This product contains Sodium azide: a POISONOUS AND HAZARDOUS SUBSTANCE which should be handled by trained staff only.
Storage:	4 °C,-20 °C
Storage Comment:	Store at 4°C for frequent use. Stored at -20°C in a manual defrost freezer for two year without detectable loss of activity. Avoid repeated freeze-thaw cycles.
Expiry Date:	24 months



Western Blotting

Image 1. Detection of LUM in Human Cartilage lysate using Polyclonal Antibody to Lumican (LUM)

Western Blotting

Image 2. Detection of Recombinant LUM, Human using Polyclonal Antibody to Lumican (LUM)

Western Blotting

Image 3. Detection of LUM in Human Lung lysate using Polyclonal Antibody to Lumican (LUM)