

Datasheet for ABIN7433828
anti-PALLD antibody (AA 1137-1383)[Go to Product page](#)

3 Images

Overview

Quantity:	100 µL
Target:	PALLD
Binding Specificity:	AA 1137-1383
Reactivity:	Human
Host:	Rabbit
Clonality:	Polyclonal
Conjugate:	This PALLD antibody is un-conjugated
Application:	Western Blotting (WB), Immunohistochemistry (IHC), Immunoprecipitation (IP), Immunocytochemistry (ICC)

Product Details

Purpose:	Polyclonal Antibody to Palladin (PALLD)
Immunogen:	Recombinant Palladin (PALLD) corresponding to Phe1137~Leu1383
Isotype:	IgG
Specificity:	The antibody is a rabbit polyclonal antibody raised against PALLD. It has been selected for its ability to recognize PALLD in immunohistochemical staining and western blotting.
Purification:	Antigen-specific affinity chromatography followed by Protein A affinity chromatography

Target Details

Target:	PALLD
---------	-------

Target Details

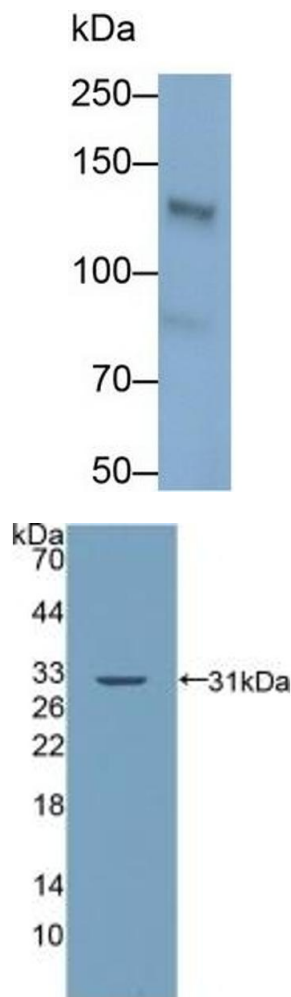
Alternative Name:	Palladin (PALLD Products)
Background:	Cytoskeletal Associated Protein, Sarcoma antigen NY-SAR-77

Application Details

Application Notes:	Western blotting: 0.5-2 µg/mL Immunohistochemistry: 5-20 µg/mL Immunocytochemistry: 5-20 µg/mL Optimal working dilutions must be determined by end user.
Comment:	The thermal stability is described by the loss rate. The loss rate was determined by accelerated thermal degradation test, that is, incubate the protein at 37°C for 48h, and no obvious degradation and precipitation were observed. The loss rate is less than 5% within the expiration date under appropriate storage condition.
Restrictions:	For Research Use only

Handling

Format:	Liquid
Buffer:	0.01M PBS, pH 7.4, containing 0.05 % Proclin-300, 50 % glycerol.
Preservative:	ProClin
Precaution of Use:	This product contains ProClin: a POISONOUS AND HAZARDOUS SUBSTANCE which should be handled by trained staff only.
Storage:	4 °C,-20 °C
Storage Comment:	Store at 4°C for frequent use. Stored at -20°C in a manual defrost freezer for two year without detectable loss of activity. Avoid repeated freeze-thaw cycles.
Expiry Date:	24 months



Western Blotting

Image 1. Detection of PALLD in HeLa cell lysate using Polyclonal Antibody to Palladin (PALLD)

Western Blotting

Image 2. Detection of Recombinant PALLD, Human using Polyclonal Antibody to Palladin (PALLD)

Immunohistochemistry

Image 3. Detection of PALLD in Human Colon Tissue using Polyclonal Antibody to Palladin (PALLD)

