

Datasheet for ABIN7433867
anti-SLC6A3 antibody (AA 562-620)[Go to Product page](#)

1 Image

Overview

Quantity:	100 µL
Target:	SLC6A3
Binding Specificity:	AA 562-620
Reactivity:	Human
Host:	Rabbit
Clonality:	Polyclonal
Conjugate:	This SLC6A3 antibody is un-conjugated
Application:	Western Blotting (WB), Immunohistochemistry (IHC), Immunoprecipitation (IP), Immunocytochemistry (ICC)

Product Details

Purpose:	Polyclonal Antibody to Dopamine Transporter (DAT)
Immunogen:	Recombinant Dopamine Transporter (DAT) corresponding to Trp562~Val620 (Accession # Q01959) with N-terminal His and GST Tag
Isotype:	IgG
Specificity:	The antibody is a rabbit polyclonal antibody raised against DAT. It has been selected for its ability to recognize DAT in immunohistochemical staining and western blotting.
Cross-Reactivity:	Mouse
Purification:	Antigen-specific affinity chromatography followed by Protein A affinity chromatography

Target Details

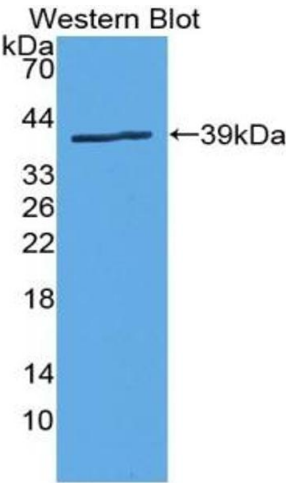
Target:	SLC6A3
Alternative Name:	Dopamine Transporter (SLC6A3 Products)
Background:	SLC6A3, DAT1, Sodium-dependent dopamine transporter, Dopamine Active Transporter, SLC6-A3, Solute Carrier Family 6(neurotransmitter Transporter,Dopamine),Member 3
Pathways:	Dopaminergic Neurogenesis

Application Details

Application Notes:	Western blotting: 0.5-2 µg/mL Immunohistochemistry: 5-20 µg/mL Immunocytochemistry: 5-20 µg/mL Optimal working dilutions must be determined by end user.
Comment:	The thermal stability is described by the loss rate. The loss rate was determined by accelerated thermal degradation test, that is, incubate the protein at 37°C for 48h, and no obvious degradation and precipitation were observed. The loss rate is less than 5% within the expiration date under appropriate storage condition.
Restrictions:	For Research Use only

Handling

Format:	Liquid
Buffer:	PBS, pH 7.4, containing 0.02 % Sodium azide, 50 % glycerol.
Preservative:	Sodium azide
Precaution of Use:	This product contains Sodium azide: a POISONOUS AND HAZARDOUS SUBSTANCE which should be handled by trained staff only.
Storage:	4 °C,-20 °C
Storage Comment:	Store at 4°C for frequent use. Stored at -20°C in a manual defrost freezer for two year without detectable loss of activity. Avoid repeated freeze-thaw cycles.
Expiry Date:	24 months



Western Blotting

Image 1. Detection of Recombinant DAT, Human using Polyclonal Antibody to Dopamine Transporter (DAT)