

Datasheet for ABIN7433873
anti-IGF2R antibody (AA 2167-2442)[Go to Product page](#)

2 Images

Overview

Quantity:	100 µL
Target:	IGF2R
Binding Specificity:	AA 2167-2442
Reactivity:	Human
Host:	Rabbit
Clonality:	Polyclonal
Conjugate:	This IGF2R antibody is un-conjugated
Application:	Western Blotting (WB), Immunohistochemistry (IHC), Immunoprecipitation (IP), Immunocytochemistry (ICC)

Product Details

Purpose:	Polyclonal Antibody to Insulin Like Growth Factor 2 Receptor (IGF2R)
Immunogen:	Recombinant Insulin Like Growth Factor 2 Receptor (IGF2R) corresponding to Asn2167~Ala2442 with N-terminal His Tag
Isotype:	IgG
Specificity:	The antibody is a rabbit polyclonal antibody raised against IGF2R. It has been selected for its ability to recognize IGF2R in immunohistochemical staining and western blotting.
Purification:	Antigen-specific affinity chromatography followed by Protein A affinity chromatography

Target Details

Target:	IGF2R
---------	-------

Target Details

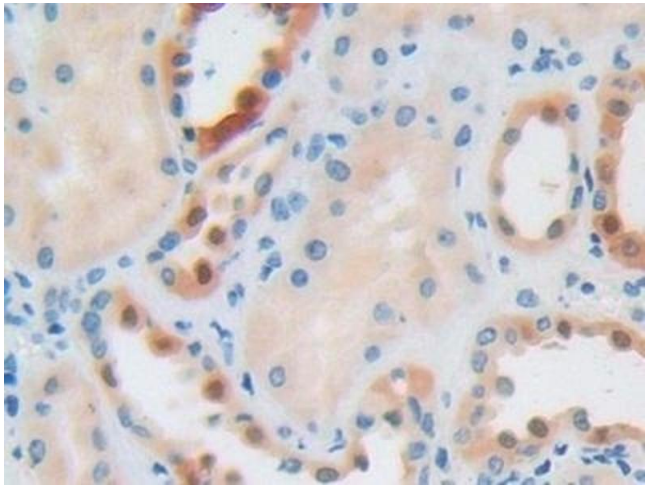
Alternative Name:	Insulin Like Growth Factor 2 Receptor (IGF2R Products)
Background:	CD222, IGF2-R, CIMPR, M6P-R, MPRI, Cation-Independent Mannose-6 Phosphate Receptor, M6P/IGF2 receptor, 300 kDa mannose 6-phosphate receptor

Application Details

Application Notes:	Western blotting: 0.5-2 µg/mL Immunohistochemistry: 5-20 µg/mL Immunocytochemistry: 5-20 µg/mL Optimal working dilutions must be determined by end user.
Comment:	The thermal stability is described by the loss rate. The loss rate was determined by accelerated thermal degradation test, that is, incubate the protein at 37°C for 48h, and no obvious degradation and precipitation were observed. The loss rate is less than 5% within the expiration date under appropriate storage condition.
Restrictions:	For Research Use only

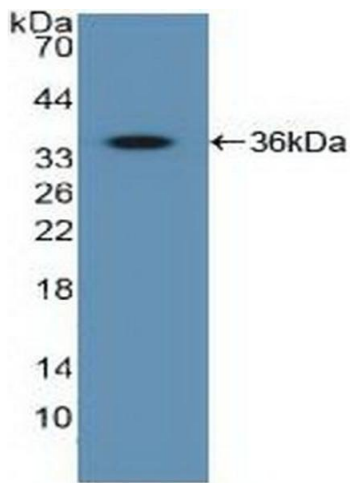
Handling

Format:	Liquid
Buffer:	0.01M PBS, pH 7.4, containing 0.05 % Proclin-300, 50 % glycerol.
Preservative:	ProClin
Precaution of Use:	This product contains ProClin: a POISONOUS AND HAZARDOUS SUBSTANCE which should be handled by trained staff only.
Storage:	4 °C,-20 °C
Storage Comment:	Store at 4°C for frequent use. Stored at -20°C in a manual defrost freezer for two year without detectable loss of activity. Avoid repeated freeze-thaw cycles.
Expiry Date:	24 months



Immunohistochemistry

Image 1. Detection of IGF2R in Human Kidney Tissue using Polyclonal Antibody to Insulin Like Growth Factor 2 Receptor (IGF2R)



Western Blotting

Image 2. Detection of Recombinant IGF2R, Human using Polyclonal Antibody to Insulin Like Growth Factor 2 Receptor (IGF2R)