



[Go to Product page](#)

Datasheet for ABIN7434017
anti-HLA-E antibody (AA 22-358)

3 Images

Overview

Quantity:	100 µL
Target:	HLA-E
Binding Specificity:	AA 22-358
Reactivity:	Human
Host:	Rabbit
Clonality:	Polyclonal
Conjugate:	This HLA-E antibody is un-conjugated
Application:	Western Blotting (WB), Immunoprecipitation (IP), Immunohistochemistry (IHC), Immunocytochemistry (ICC)

Product Details

Purpose:	Polyclonal Antibody to Major Histocompatibility Complex Class I E (MHCE)
Immunogen:	Recombinant Major Histocompatibility Complex Class I E (MHCE) corresponding to Gly22~Leu358 with N-terminal His Tag
Isotype:	IgG
Specificity:	The antibody is a rabbit polyclonal antibody raised against MHCE. It has been selected for its ability to recognize MHCE in immunohistochemical staining and western blotting.
Cross-Reactivity:	Pig
Purification:	Antigen-specific affinity chromatography followed by Protein A affinity chromatography

Target Details

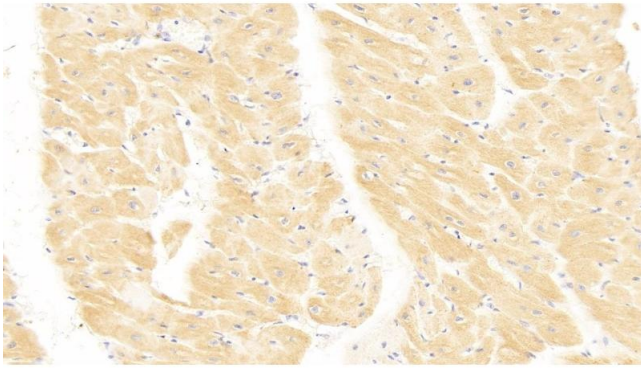
Target:	HLA-E
Alternative Name:	Major Histocompatibility Complex Class I E (HLA-E Products)
Background:	HLAE, EA1.2, EA2.1, HLA-6.2, MHC-E, HLA-E, Leukocyte Antigen E, MHC class I antigen E, HLA class I histocompatibility antigen, alpha chain E
Pathways:	Regulation of Leukocyte Mediated Immunity , Positive Regulation of Immune Effector Process , Human Leukocyte Antigen (HLA) in Adaptive Immune Response

Application Details

Application Notes:	Western blotting: 0.5-2 µg/mL 1:200-800 Immunohistochemistry: 5-20 µg/mL 1:20-80 Immunocytochemistry: 5-20 µg/mL 1:20-80 Optimal working dilutions must be determined by end user.
Comment:	The thermal stability is described by the loss rate. The loss rate was determined by accelerated thermal degradation test, that is, incubate the protein at 37°C for 48h, and no obvious degradation and precipitation were observed. The loss rate is less than 5% within the expiration date under appropriate storage condition.
Restrictions:	For Research Use only

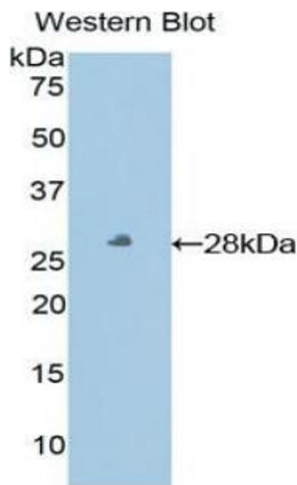
Handling

Format:	Liquid
Buffer:	PBS, pH 7.4, containing 0.02 % Sodium azide, 50 % glycerol.
Preservative:	Sodium azide
Precaution of Use:	This product contains Sodium azide: a POISONOUS AND HAZARDOUS SUBSTANCE which should be handled by trained staff only.
Storage:	4 °C, -20 °C
Storage Comment:	Store at 4°C for frequent use. Stored at -20°C in a manual defrost freezer for two year without detectable loss of activity. Avoid repeated freeze-thaw cycles.
Expiry Date:	24 months



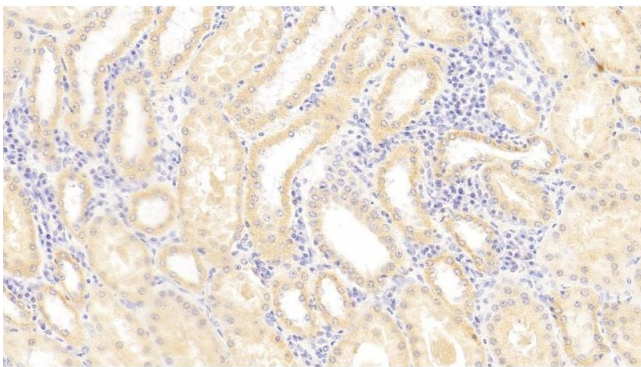
Immunohistochemistry

Image 1. Detection of MHCE in Human Heart Tissue using Polyclonal Antibody to Major Histocompatibility Complex Class I E (MHCE)



Western Blotting

Image 2. Detection of Recombinant MHCE, Human using Polyclonal Antibody to Major Histocompatibility Complex Class I E (MHCE)



Immunohistochemistry

Image 3. Detection of MHCE in Human Kidney Tissue using Polyclonal Antibody to Major Histocompatibility Complex Class I E (MHCE)