

Datasheet for ABIN7434038  
**anti-MCM2 antibody (AA 473-679)**



[Go to Product page](#)

3 Images

## Overview

Quantity:	100 µL
Target:	MCM2
Binding Specificity:	AA 473-679
Reactivity:	Human
Host:	Rabbit
Clonality:	Polyclonal
Conjugate:	This MCM2 antibody is un-conjugated
Application:	Western Blotting (WB), Immunohistochemistry (IHC), Immunocytochemistry (ICC), Immunoprecipitation (IP)

## Product Details

Purpose:	Polyclonal Antibody to Minichromosome Maintenance Deficient 2 (MCM2)
Immunogen:	Recombinant Minichromosome Maintenance Deficient 2 (MCM2) corresponding to Ile473~Val679 with N-terminal His Tag
Isotype:	IgG
Specificity:	The antibody is a rabbit polyclonal antibody raised against MCM2. It has been selected for its ability to recognize MCM2 in immunohistochemical staining and western blotting.
Cross-Reactivity:	Mouse, Rat
Purification:	Antigen-specific affinity chromatography followed by Protein A affinity chromatography

## Target Details

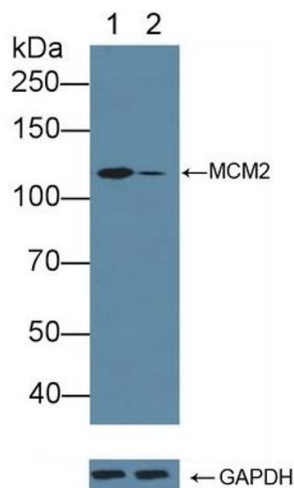
Target:	MCM2
Alternative Name:	MCM2
Background:	BM28, CCNL1, CDCL1, Cdc19, Mitotin, DNA Replication Licensing Factor MCM2, Nuclear protein BM28
UniProt:	<a href="#">P49736</a>
Pathways:	<a href="#">DNA Damage Repair</a> , <a href="#">Mitotic G1-G1/S Phases</a> , <a href="#">DNA Replication</a> , <a href="#">Chromatin Binding</a> , <a href="#">Synthesis of DNA</a>

## Application Details

Application Notes:	Western blotting: 0.01-2 µg/mL, Immunohistochemistry: 5-20 µg/mL, Immunocytochemistry: 5-20 µg/mL, Optimal working dilutions must be determined by end user.
Comment:	The thermal stability is described by the loss rate. The loss rate was determined by accelerated thermal degradation test, that is, incubate the protein at 37°C for 48h, and no obvious degradation and precipitation were observed. The loss rate is less than 5% within the expiration date under appropriate storage condition.
Restrictions:	For Research Use only

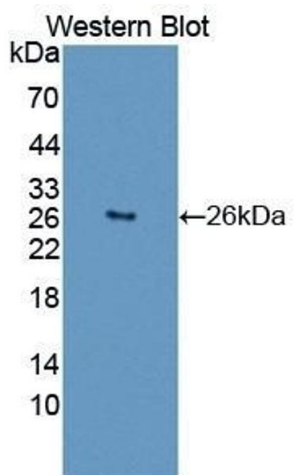
## Handling

Format:	Liquid
Concentration:	0.5 mg/mL
Buffer:	PBS, pH 7.4, containing 0.02 % Sodium azide, 50 % glycerol.
Preservative:	Sodium azide
Precaution of Use:	This product contains Sodium azide: a POISONOUS AND HAZARDOUS SUBSTANCE which should be handled by trained staff only.
Storage:	4 °C, -20 °C
Storage Comment:	Store at 4°C for frequent use. Stored at -20°C in a manual defrost freezer for two year without detectable loss of activity. Avoid repeated freeze-thaw cycles.
Expiry Date:	24 months



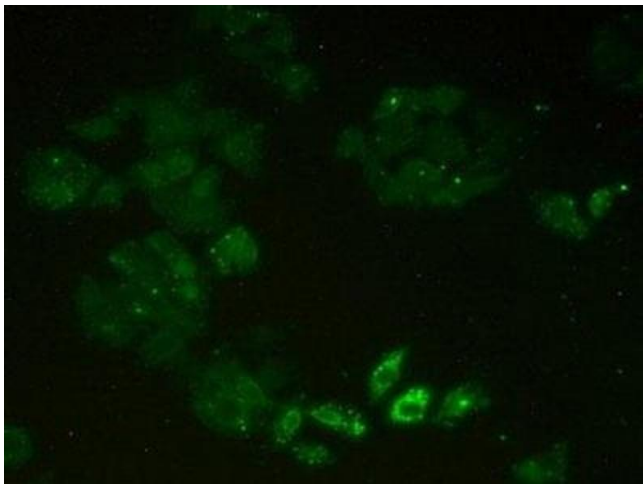
#### Western Blotting

**Image 1.** Knockout Varification: Lane 1: Wild-type K562 cell lysate, Lane 2: MCM2 knockout K562 cell lysate, Predicted MW: 101kd Observed MW: 120kd Primary Ab: 3 µg/mL Rabbit Anti-Human MCM2 Antibody Second Ab: 0.2 µg/mL HRP-Linked Caprine Anti-Rabbit IgG Polyclonal Antibody (ABIN6950948)



#### Western Blotting

**Image 2.** Detection of Recombinant MCM2, Human using Polyclonal Antibody to Minichromosome Maintenance Deficient 2 (MCM2)



#### Immunohistochemistry

**Image 3.** Detection of MCM2 in Human HeLa Cells using Polyclonal Antibody to Minichromosome Maintenance Deficient 2 (MCM2)