

Datasheet for ABIN7434164
anti-Adipsin antibody (AA 1-253)

3 Images

[Go to Product page](#)

Overview

Quantity:	100 µL
Target:	Adipsin (CFD)
Binding Specificity:	AA 1-253
Reactivity:	Human
Host:	Rabbit
Clonality:	Polyclonal
Conjugate:	This Adipsin antibody is un-conjugated
Application:	Western Blotting (WB), Immunohistochemistry (IHC), Immunoprecipitation (IP), Immunocytochemistry (ICC)

Product Details

Purpose:	Polyclonal Antibody to Complement Factor D (CFD)
Immunogen:	Recombinant Complement Factor D (CFD) corresponding to Met1~Ala253 (Accession # P00746) with N-terminal His and GST Tag
Isotype:	IgG
Specificity:	The antibody is a rabbit polyclonal antibody raised against CFD. It has been selected for its ability to recognize CFD in immunohistochemical staining and western blotting.
Purification:	Antigen-specific affinity chromatography followed by Protein A affinity chromatography

Target Details

Target:	Adipsin (CFD)
---------	---------------

Target Details

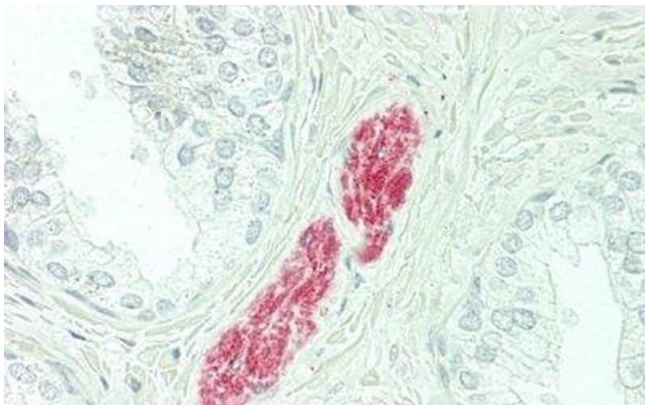
Alternative Name:	Complement Factor D (CFD Products)
Background:	CF-D, DF, PFD, ADN, Adipsin, Properdin Factor D, C3 convertase activator
Pathways:	Complement System

Application Details

Application Notes:	Western blotting: 0.5-2 µg/mL Immunocytochemistry in formalin fixed cells: 5-20 µg/mL Immunohistochemistry in formalin fixed frozen section: 5-20 µg/mL Immunohistochemistry in paraffin section: 5-20 µg/mL Enzyme-linked Immunosorbent Assay: 0.05-2 µg/mL Optimal working dilutions must be determined by end user.
Comment:	The thermal stability is described by the loss rate. The loss rate was determined by accelerated thermal degradation test, that is, incubate the protein at 37°C for 48h, and no obvious degradation and precipitation were observed. The loss rate is less than 5% within the expiration date under appropriate storage condition.
Restrictions:	For Research Use only

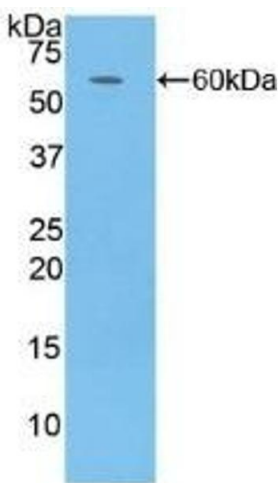
Handling

Format:	Liquid
Buffer:	PBS, pH 7.4, containing 0.02 % Sodium azide, 50 % glycerol.
Preservative:	Sodium azide
Precaution of Use:	This product contains Sodium azide: a POISONOUS AND HAZARDOUS SUBSTANCE which should be handled by trained staff only.
Storage:	4 °C,-20 °C
Storage Comment:	Store at 4°C for frequent use. Stored at -20°C in a manual defrost freezer for two year without detectable loss of activity. Avoid repeated freeze-thaw cycles.
Expiry Date:	24 months



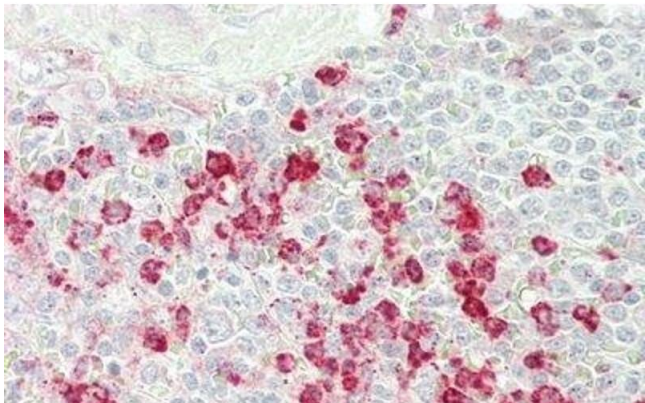
Immunohistochemistry

Image 1. Detection of CFD in Human Prostate Tissue using Polyclonal Antibody to Complement Factor D (CFD)



Western Blotting

Image 2. Detection of Recombinant CFD, Human using Polyclonal Antibody to Complement Factor D (CFD)



Immunohistochemistry

Image 3. Detection of CFD in Human Spleen Tissue using Polyclonal Antibody to Complement Factor D (CFD)