

Datasheet for ABIN7434203  
**anti-CALU antibody (AA 20-315)**

## 9 Images

[Go to Product page](#)

## Overview

Quantity:	100 µL
Target:	CALU
Binding Specificity:	AA 20-315
Reactivity:	Human
Host:	Rabbit
Clonality:	Polyclonal
Conjugate:	This CALU antibody is un-conjugated
Application:	Western Blotting (WB), Immunohistochemistry (IHC), Immunoprecipitation (IP), Immunocytochemistry (ICC)

## Product Details

Purpose:	Polyclonal Antibody to Calumenin (CALU)
Immunogen:	Recombinant Calumenin (CALU) corresponding to Lys20~Phe315
Isotype:	IgG
Specificity:	The antibody is a rabbit polyclonal antibody raised against CALU. It has been selected for its ability to recognize CALU in immunohistochemical staining and western blotting.
Cross-Reactivity:	Mouse
Purification:	Antigen-specific affinity chromatography followed by Protein A affinity chromatography

## Target Details

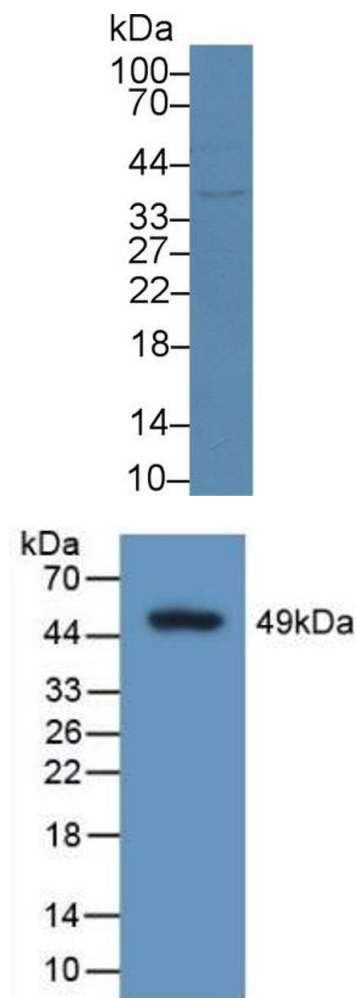
Target:	CALU
Alternative Name:	Calumenin ( <a href="#">CALU Products</a> )
Background:	Crocalbin

## Application Details

Application Notes:	Western blotting: 0.5-3 µg/mL Immunohistochemistry: 5-30 µg/mL Immunocytochemistry: 5-30 µg/mL Optimal working dilutions must be determined by end user.
Comment:	The thermal stability is described by the loss rate. The loss rate was determined by accelerated thermal degradation test, that is, incubate the protein at 37°C for 48h, and no obvious degradation and precipitation were observed. The loss rate is less than 5% within the expiration date under appropriate storage condition.
Restrictions:	For Research Use only

## Handling

Format:	Liquid
Buffer:	0.01M PBS, pH 7.4, containing 0.05 % Proclin-300, 50 % glycerol.
Preservative:	ProClin
Precaution of Use:	This product contains ProClin: a POISONOUS AND HAZARDOUS SUBSTANCE which should be handled by trained staff only.
Storage:	4 °C,-20 °C
Storage Comment:	Store at 4°C for frequent use. Stored at -20°C in a manual defrost freezer for two year without detectable loss of activity. Avoid repeated freeze-thaw cycles.
Expiry Date:	24 months

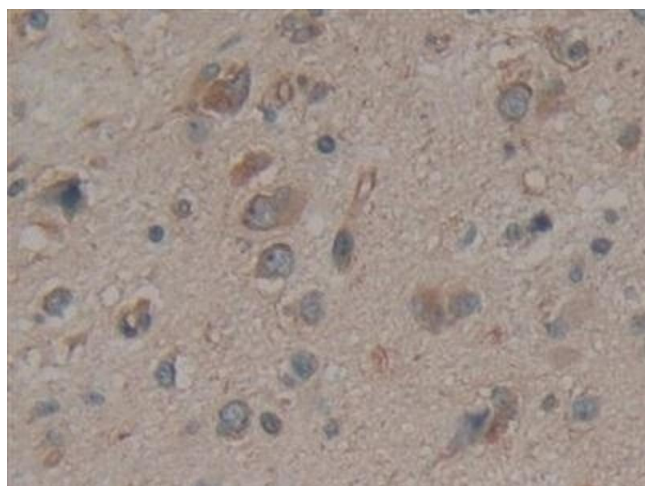


#### Western Blotting

**Image 1.** Detection of CALU in Human Jurkat cell lysate using Polyclonal Antibody to Calumenin (CALU)

#### Western Blotting

**Image 2.** Detection of Recombinant CALU, Human using Polyclonal Antibody to Calumenin (CALU)



#### Immunohistochemistry

**Image 3.** Detection of CALU in Human Glioma Tissue using Polyclonal Antibody to Calumenin (CALU)

Please check the [product details page](#) for more images. Overall 9 images are available for ABIN7434203.