

Datasheet for ABIN7434305
anti-IDE antibody (AA 753-973)

8 Images

[Go to Product page](#)

Overview

| | |
|----------------------|---|
| Quantity: | 100 µL |
| Target: | IDE |
| Binding Specificity: | AA 753-973 |
| Reactivity: | Human |
| Host: | Rabbit |
| Clonality: | Polyclonal |
| Conjugate: | This IDE antibody is un-conjugated |
| Application: | Western Blotting (WB), Immunohistochemistry (IHC), Immunoprecipitation (IP), Immunocytochemistry (ICC) |

Product Details

| | |
|-------------------|--|
| Purpose: | Polyclonal Antibody to Insulin Degrading Enzyme (IDE) |
| Immunogen: | Recombinant Insulin Degrading Enzyme (IDE) corresponding to Ala753~Pro973 with N-terminal His Tag |
| Isotype: | IgG |
| Specificity: | The antibody is a rabbit polyclonal antibody raised against IDE. It has been selected for its ability to recognize IDE in immunohistochemical staining and western blotting. |
| Cross-Reactivity: | Mouse |
| Purification: | Antigen-specific affinity chromatography followed by Protein A affinity chromatography |

Target Details

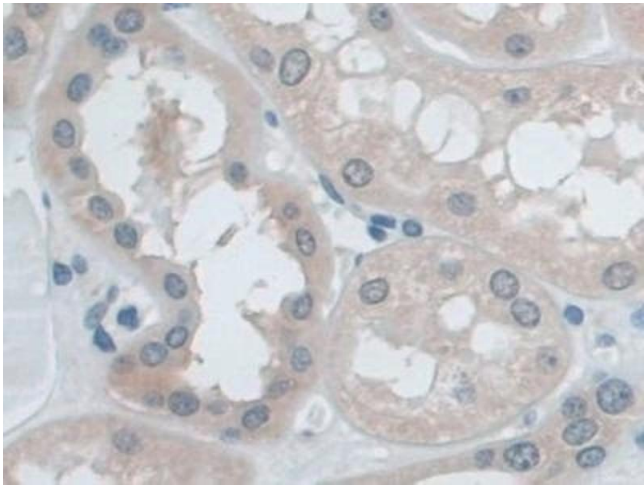
| | |
|-------------------|---|
| Target: | IDE |
| Alternative Name: | Insulin Degrading Enzyme (IDE Products) |
| Background: | Insulysin, Insulin Protease, Abeta-degrading protease, Insulinase |
| Pathways: | SARS-CoV-2 Protein Interactome |

Application Details

| | |
|--------------------|---|
| Application Notes: | Western blotting: 0.5-2 µg/mL Immunohistochemistry: 5-20 µg/mL Immunocytochemistry: 5-20 µg/mL Optimal working dilutions must be determined by end user. |
| Comment: | The thermal stability is described by the loss rate. The loss rate was determined by accelerated thermal degradation test, that is, incubate the protein at 37°C for 48h, and no obvious degradation and precipitation were observed. The loss rate is less than 5% within the expiration date under appropriate storage condition. |
| Restrictions: | For Research Use only |

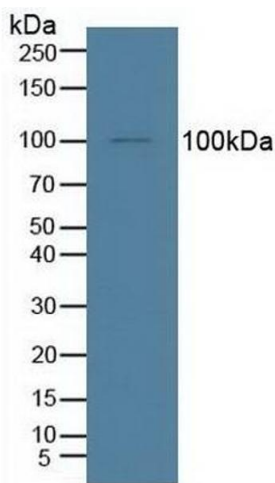
Handling

| | |
|--------------------|---|
| Format: | Liquid |
| Buffer: | 0.01M PBS, pH 7.4, containing 0.05 % Proclin-300, 50 % glycerol. |
| Preservative: | ProClin |
| Precaution of Use: | This product contains ProClin: a POISONOUS AND HAZARDOUS SUBSTANCE which should be handled by trained staff only. |
| Storage: | 4 °C,-20 °C |
| Storage Comment: | Store at 4°C for frequent use. Stored at -20°C in a manual defrost freezer for two year without detectable loss of activity. Avoid repeated freeze-thaw cycles. |
| Expiry Date: | 24 months |



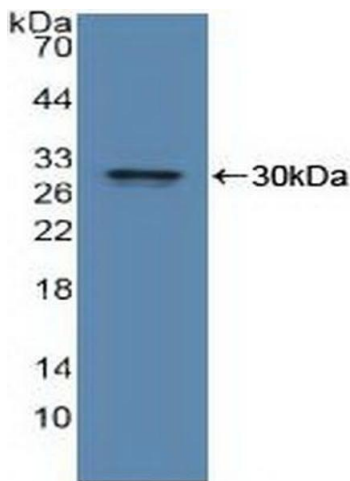
Immunohistochemistry

Image 1. Detection of IDE in Human Kidney Tissue using Polyclonal Antibody to Insulin Degrading Enzyme (IDE)



Western Blotting

Image 2. Detection of IDE in Human HepG2 Cells using Polyclonal Antibody to Insulin Degrading Enzyme (IDE)



Western Blotting

Image 3. Detection of Recombinant IDE, Human using Polyclonal Antibody to Insulin Degrading Enzyme (IDE)

Please check the [product details page](#) for more images. Overall 8 images are available for ABIN7434305.