

Datasheet for ABIN7434392
anti-Epiregulin antibody

2 Images

[Go to Product page](#)

Overview

Quantity:	100 µL
Target:	Epiregulin (EREG)
Reactivity:	Human
Host:	Rabbit
Clonality:	Polyclonal
Conjugate:	This Epiregulin antibody is un-conjugated
Application:	Western Blotting (WB), ELISA, Immunocytochemistry (ICC), Immunohistochemistry (Paraffin-embedded Sections) (IHC (p)), Immunohistochemistry (Frozen Sections) (IHC (fro))

Product Details

Purpose:	Polyclonal Antibody to Epiregulin (EREG)
Immunogen:	Recombinant Epiregulin (EREG)
Isotype:	IgG
Specificity:	The antibody is a rabbit polyclonal antibody raised against EREG. It has been selected for its ability to recognize EREG in immunohistochemical staining and western blotting.
Cross-Reactivity:	Mouse, Pig
Purification:	Antigen-specific affinity chromatography followed by Protein A affinity chromatography

Target Details

Target:	Epiregulin (EREG)
---------	-------------------

Target Details

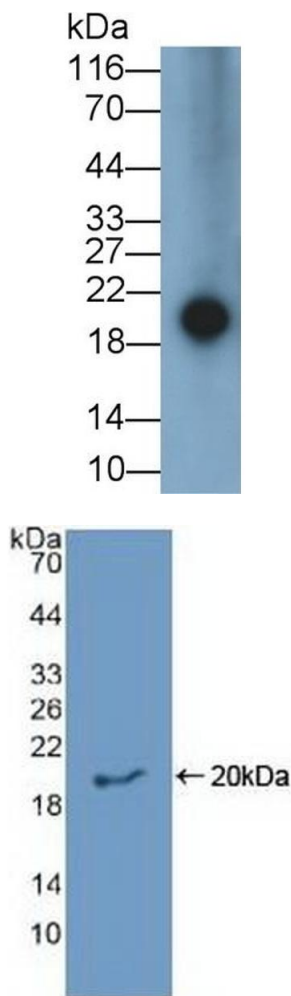
Alternative Name:	Epiregulin (EREG Products)
Background:	EPR, ER, Proepiregulin
Pathways:	RTK Signaling , Fc-epsilon Receptor Signaling Pathway , EGFR Signaling Pathway , Neurotrophin Signaling Pathway , Regulation of Muscle Cell Differentiation

Application Details

Application Notes:	Western blotting: 0.5-2 µg/mL Immunohistochemistry: 5-20 µg/mL Immunocytochemistry: 5-20 µg/mL Optimal working dilutions must be determined by end user.
Comment:	The thermal stability is described by the loss rate. The loss rate was determined by accelerated thermal degradation test, that is, incubate the protein at 37°C for 48h, and no obvious degradation and precipitation were observed. The loss rate is less than 5% within the expiration date under appropriate storage condition.
Restrictions:	For Research Use only

Handling

Format:	Liquid
Buffer:	PBS, pH 7.4, containing 0.02 % Sodium azide, 50 % glycerol.
Preservative:	Sodium azide
Precaution of Use:	This product contains Sodium azide: a POISONOUS AND HAZARDOUS SUBSTANCE which should be handled by trained staff only.
Storage:	4 °C, -20 °C
Storage Comment:	Store at 4°C for frequent use. Stored at -20°C in a manual defrost freezer for two year without detectable loss of activity. Avoid repeated freeze-thaw cycles.
Expiry Date:	24 months



Western Blotting

Image 1. Detection of EREG in Porcine Tongue lysate using Polyclonal Antibody to Epiregulin (EREG)

Western Blotting

Image 2. Detection of Recombinant EREG, Human using Polyclonal Antibody to Epiregulin (EREG)