

Datasheet for ABIN7434476
anti-tau antibody (AA 130-386)

5 Images

[Go to Product page](#)

Overview

Quantity:	100 µL
Target:	tau
Binding Specificity:	AA 130-386
Reactivity:	Human
Host:	Rabbit
Clonality:	Polyclonal
Conjugate:	This tau antibody is un-conjugated
Application:	Western Blotting (WB), Immunohistochemistry (IHC), Immunocytochemistry (ICC), Immunoprecipitation (IP)

Product Details

Purpose:	Polyclonal Antibody to Tau Protein (MAPT)
Immunogen:	Recombinant Tau Protein (MAPT) corresponding to Lys130~Thr386 with N-terminal His Tag
Isotype:	IgG
Specificity:	The antibody is a rabbit polyclonal antibody raised against MAPT. It has been selected for its ability to recognize MAPT in immunohistochemical staining and western blotting.
Purification:	Antigen-specific affinity chromatography followed by Protein A affinity chromatography

Target Details

Target:	tau
---------	-----

Target Details

Abstract: [tau Products](#)

Background: DDPAC, FTDP-17, MAPTL, MSTD, MTBT1, MTBT2, PPND, Neurofibrillary tangle protein, Microtubule Associated Protein Tau, Paired helical filament-tau, G Protein Beta1/Gamma2 Subunit-Interacting Factor 1

Application Details

Application Notes: Western blotting: 0.5-2 µg/mL
Immunohistochemistry: 5-20 µg/mL
Immunocytochemistry: 5-20 µg/mL
Optimal working dilutions must be determined by end user.

Comment: The thermal stability is described by the loss rate. The loss rate was determined by accelerated thermal degradation test, that is, incubate the protein at 37°C for 48h, and no obvious degradation and precipitation were observed. The loss rate is less than 5% within the expiration date under appropriate storage condition.

Restrictions: For Research Use only

Handling

Format: Liquid

Buffer: 0.01M PBS, pH 7.4, containing 0.05 % Proclin-300, 50 % glycerol.

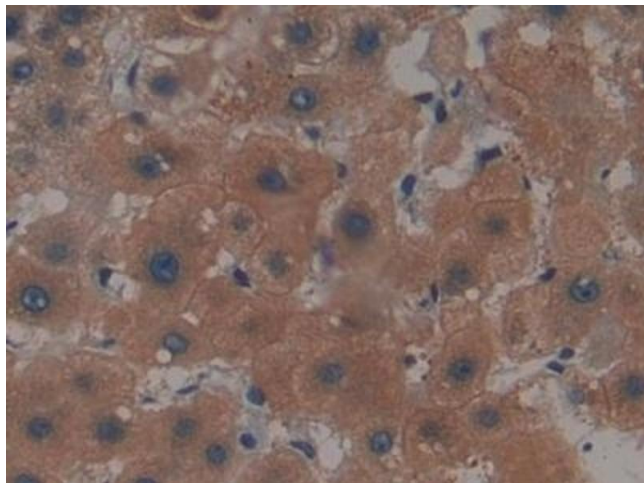
Preservative: ProClin

Precaution of Use: This product contains ProClin: a POISONOUS AND HAZARDOUS SUBSTANCE which should be handled by trained staff only.

Storage: 4 °C, -20 °C

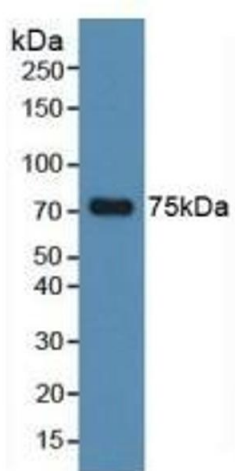
Storage Comment: Store at 4°C for frequent use. Stored at -20°C in a manual defrost freezer for two year without detectable loss of activity. Avoid repeated freeze-thaw cycles.

Expiry Date: 24 months



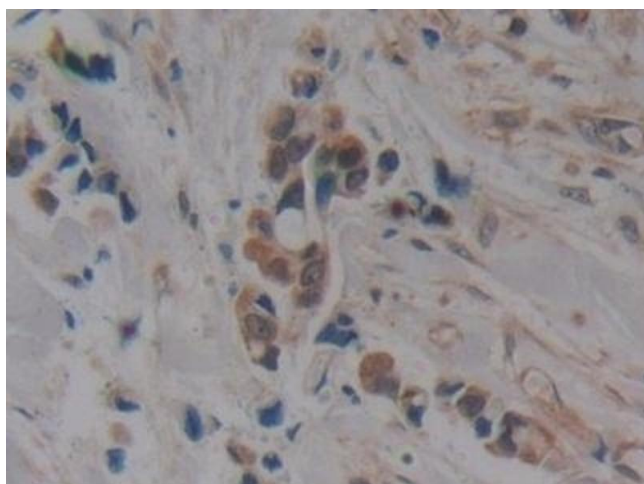
Immunohistochemistry

Image 1. Detection of MAPT in Human Liver cancer Tissue using Polyclonal Antibody to Tau Protein (MAPT)



Western Blotting

Image 2. Detection of MAPT in Human Hela Cells using Polyclonal Antibody to Tau Protein (MAPT)



Immunohistochemistry

Image 3. Detection of MAPT in Human Breast cancer Tissue using Polyclonal Antibody to Tau Protein (MAPT)

Please check the [product details page](#) for more images. Overall 5 images are available for ABIN7434476.