



[Go to Product page](#)

Datasheet for ABIN7434539
anti-GLUT4 antibody (AA 228-292)

2 Images

Overview

Quantity:	100 µL
Target:	GLUT4 (SLC2A4)
Binding Specificity:	AA 228-292
Reactivity:	Human
Host:	Rabbit
Clonality:	Polyclonal
Conjugate:	This GLUT4 antibody is un-conjugated
Application:	Western Blotting (WB), Immunohistochemistry (IHC), Immunoprecipitation (IP), Immunocytochemistry (ICC)

Product Details

Purpose:	Polyclonal Antibody to Glucose Transporter 4 (GLUT4)
Immunogen:	Recombinant Glucose Transporter 4 (GLUT4) corresponding to Arg228~Val292 with N-terminal His and GST Tag
Isotype:	IgG
Specificity:	The antibody is a rabbit polyclonal antibody raised against GLUT4. It has been selected for its ability to recognize GLUT4 in immunohistochemical staining and western blotting.
Cross-Reactivity:	Mouse, Pig
Purification:	Antigen-specific affinity chromatography followed by Protein A affinity chromatography

Target Details

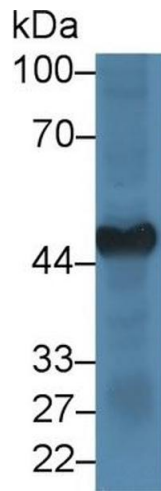
Target:	GLUT4 (SLC2A4)
Alternative Name:	Glucose Transporter 4 (SLC2A4 Products)
Background:	SLC2A4, Solute carrier family 2, facilitated glucose transporter member 4, Glucose transporter type 4, insulin-responsive
Pathways:	AMPK Signaling , Carbohydrate Homeostasis , Proton Transport , Brown Fat Cell Differentiation , Warburg Effect

Application Details

Application Notes:	Western blotting: 0.5-2 µg/mL Immunohistochemistry: 5-20 µg/mL Immunocytochemistry: 5-20 µg/mL Optimal working dilutions must be determined by end user.
Comment:	The thermal stability is described by the loss rate. The loss rate was determined by accelerated thermal degradation test, that is, incubate the protein at 37°C for 48h, and no obvious degradation and precipitation were observed. The loss rate is less than 5% within the expiration date under appropriate storage condition.
Restrictions:	For Research Use only

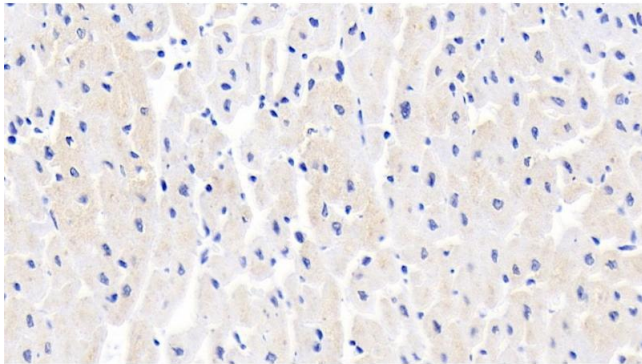
Handling

Format:	Liquid
Buffer:	PBS, pH 7.4, containing 0.02 % Sodium azide, 50 % glycerol.
Preservative:	Sodium azide
Precaution of Use:	This product contains Sodium azide: a POISONOUS AND HAZARDOUS SUBSTANCE which should be handled by trained staff only.
Storage:	4 °C, -20 °C
Storage Comment:	Store at 4°C for frequent use. Stored at -20°C in a manual defrost freezer for two year without detectable loss of activity. Avoid repeated freeze-thaw cycles.
Expiry Date:	24 months



Western Blotting

Image 1. Detection of GLUT4 in Mouse Heart lysate using Polyclonal Antibody to Glucose Transporter 4 (GLUT4)



Immunohistochemistry

Image 2. Detection of GLUT4 in Human Cardiac Muscle Tissue using Polyclonal Antibody to Glucose Transporter 4 (GLUT4)