

Datasheet for ABIN7434548
anti-KRT8 antibody (AA 92-393)

7 Images

[Go to Product page](#)

Overview

Quantity:	100 µL
Target:	KRT8
Binding Specificity:	AA 92-393
Reactivity:	Human
Host:	Rabbit
Clonality:	Polyclonal
Conjugate:	This KRT8 antibody is un-conjugated
Application:	Western Blotting (WB), Immunohistochemistry (IHC), Immunocytochemistry (ICC), Immunoprecipitation (IP)

Product Details

Purpose:	Polyclonal Antibody to Cytokeratin 8 (CK8)
Immunogen:	Recombinant Cytokeratin 8 (CK8) corresponding to Lys92~Lys393 with N-terminal His Tag
Isotype:	IgG
Specificity:	The antibody is a rabbit polyclonal antibody raised against CK8. It has been selected for its ability to recognize CK8 in immunohistochemical staining and western blotting.
Cross-Reactivity:	Human
Purification:	Antigen-specific affinity chromatography followed by Protein A affinity chromatography

Target Details

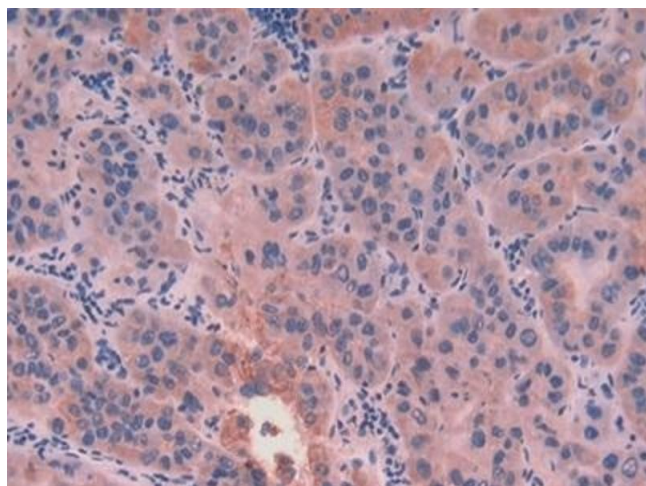
Target:	KRT8
Alternative Name:	Cytokeratin 8 (KRT8 Products)
Background:	K8, CARD2, KRT8, CYK8, K2C8, KO, Keratin 8, Keratin, type II cytoskeletal 8

Application Details

Application Notes:	Western blotting: 0.5-2 µg/mL Immunohistochemistry: 5-20 µg/mL Immunocytochemistry: 5-20 µg/mL Optimal working dilutions must be determined by end user.
Comment:	The thermal stability is described by the loss rate. The loss rate was determined by accelerated thermal degradation test, that is, incubate the protein at 37°C for 48h, and no obvious degradation and precipitation were observed. The loss rate is less than 5% within the expiration date under appropriate storage condition.
Restrictions:	For Research Use only

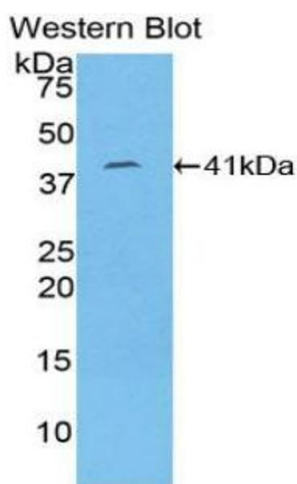
Handling

Format:	Liquid
Buffer:	PBS, pH 7.4, containing 0.02 % Sodium azide, 50 % glycerol.
Preservative:	Sodium azide
Precaution of Use:	This product contains Sodium azide: a POISONOUS AND HAZARDOUS SUBSTANCE which should be handled by trained staff only.
Storage:	4 °C,-20 °C
Storage Comment:	Store at 4°C for frequent use. Stored at -20°C in a manual defrost freezer for two year without detectable loss of activity. Avoid repeated freeze-thaw cycles.
Expiry Date:	24 months



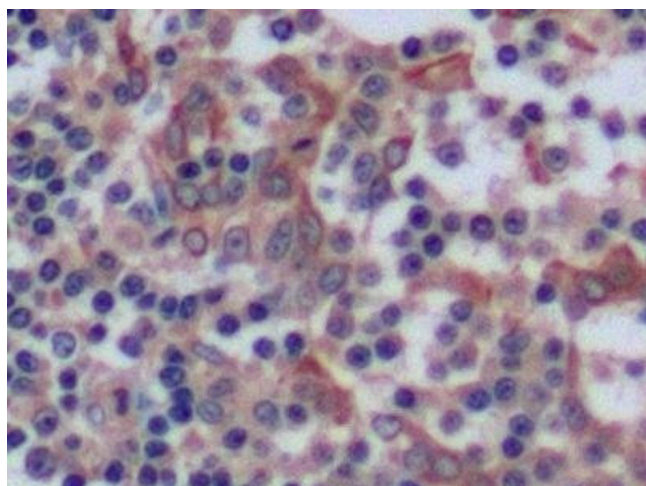
Immunohistochemistry

Image 1. Detection of CK8 in Human Liver cancer Tissue using Polyclonal Antibody to Cytokeratin 8 (CK8)



Western Blotting

Image 2. Detection of Recombinant CK8, Human using Polyclonal Antibody to Cytokeratin 8 (CK8)



Immunohistochemistry

Image 3. Detection of CK8 in Human Tonsil Tissue using Polyclonal Antibody to Cytokeratin 8 (CK8)

Please check the [product details page](#) for more images. Overall 7 images are available for ABIN7434548.