



[Go to Product page](#)

Datasheet for ABIN7434608

## anti-Phospholipase B antibody (AA 1036-1458)

### 3 Images

#### Overview

Quantity:	100 µL
Target:	Phospholipase B (PLB)
Binding Specificity:	AA 1036-1458
Reactivity:	Human
Host:	Rabbit
Clonality:	Polyclonal
Conjugate:	This Phospholipase B antibody is un-conjugated
Application:	Western Blotting (WB), Immunohistochemistry (IHC), Immunoprecipitation (IP), Immunocytochemistry (ICC)

#### Product Details

Purpose:	Polyclonal Antibody to Phospholipase B (PLB)
Immunogen:	Recombinant Phospholipase B (PLB) corresponding to Met1036~Leu1458
Isotype:	IgG
Specificity:	The antibody is a rabbit polyclonal antibody raised against PLB. It has been selected for its ability to recognize PLB in immunohistochemical staining and western blotting.
Cross-Reactivity:	Pig
Purification:	Antigen-specific affinity chromatography followed by Protein A affinity chromatography

## Target Details

---

Target:	Phospholipase B (PLB)
Alternative Name:	Phospholipase B ( <a href="#">PLB Products</a> )
Background:	PLB, PL-B1, PLB1, PLB/LIP, Phospholipase B1, membrane-associated, Phospholipase B/lipase, Lysophospholipase, Phospholipase A2

## Application Details

---

Application Notes:	Western blotting: 0.5-2 µg/mL 1:500-2000 Immunohistochemistry: 5-20 µg/mL 1:50-200 Immunocytochemistry: 5-20 µg/mL 1:50-200 Optimal working dilutions must be determined by end user.
Comment:	The thermal stability is described by the loss rate. The loss rate was determined by accelerated thermal degradation test, that is, incubate the protein at 37°C for 48h, and no obvious degradation and precipitation were observed. The loss rate is less than 5% within the expiration date under appropriate storage condition.
Restrictions:	For Research Use only

## Handling

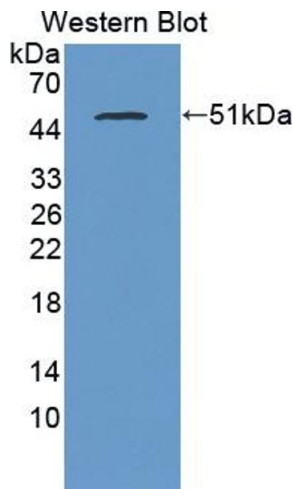
---

Format:	Liquid
Buffer:	0.01M PBS, pH 7.4, containing 0.05 % Proclin-300, 50 % glycerol.
Preservative:	ProClin
Precaution of Use:	This product contains ProClin: a POISONOUS AND HAZARDOUS SUBSTANCE which should be handled by trained staff only.
Storage:	4 °C, -20 °C
Storage Comment:	Store at 4°C for frequent use. Stored at -20°C in a manual defrost freezer for two year without detectable loss of activity. Avoid repeated freeze-thaw cycles.
Expiry Date:	24 months



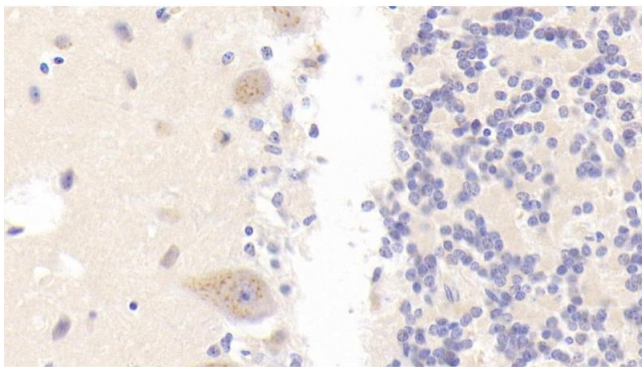
#### Western Blotting

**Image 1.** Detection of PLB in Human Serum using Polyclonal Antibody to Phospholipase B (PLB)



#### Western Blotting

**Image 2.** Detection of Recombinant PLB, Human using Polyclonal Antibody to Phospholipase B (PLB)



#### Immunohistochemistry

**Image 3.** Detection of PLB in Human Cerebellum Tissue using Polyclonal Antibody to Phospholipase B (PLB)