

Datasheet for ABIN7434653  
**anti-LAMA3 antibody (AA 47-296)**

## 3 Images

[Go to Product page](#)

## Overview

Quantity:	100 µL
Target:	LAMA3
Binding Specificity:	AA 47-296
Reactivity:	Human
Host:	Rabbit
Clonality:	Polyclonal
Conjugate:	This LAMA3 antibody is un-conjugated
Application:	ELISA, Western Blotting (WB), Immunohistochemistry (Paraffin-embedded Sections) (IHC (p)), Immunocytochemistry (ICC), Immunohistochemistry (Frozen Sections) (IHC (fro))

## Product Details

Purpose:	Polyclonal Antibody to Laminin Alpha 3 (LAMA3)
Immunogen:	Recombinant Laminin Alpha 3 (LAMA3) corresponding to Gln47~Leu296 with N-terminal His Tag
Isotype:	IgG
Specificity:	The antibody is a rabbit polyclonal antibody raised against LAMA3. It has been selected for its ability to recognize LAMA3 in immunohistochemical staining and western blotting.
Cross-Reactivity:	Pig
Purification:	Antigen-specific affinity chromatography followed by Protein A affinity chromatography

## Target Details

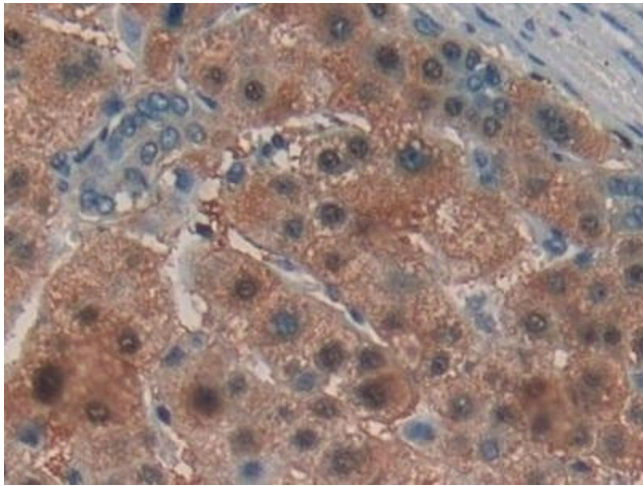
Target:	LAMA3
Alternative Name:	Laminin Alpha 3 ( <a href="#">LAMA3 Products</a> )
Background:	LAM-A3, E170, LAMNA, LOCS, Lama3a, Nicein subunit alpha, Kalinin subunit alpha, Epiligrin subunit alpha

## Application Details

Application Notes:	Western blotting: 1-5 µg/mL Immunocytochemistry in formalin fixed cells: 5-20 µg/mL Immunohistochemistry in formalin fixed frozen section: 5-20 µg/mL Immunohistochemistry in paraffin section: 5-20 µg/mL Enzyme-linked Immunosorbent Assay: 0.05-2 µg/mL Optimal working dilutions must be determined by end user.
Comment:	The thermal stability is described by the loss rate. The loss rate was determined by accelerated thermal degradation test, that is, incubate the protein at 37°C for 48h, and no obvious degradation and precipitation were observed. The loss rate is less than 5% within the expiration date under appropriate storage condition.
Restrictions:	For Research Use only

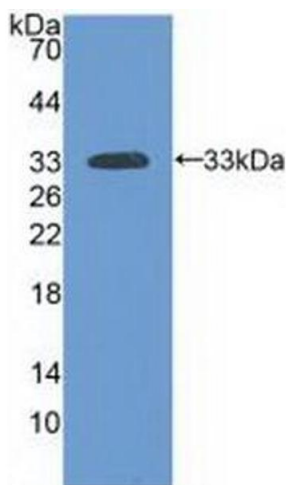
## Handling

Format:	Liquid
Buffer:	0.01M PBS, pH 7.4, containing 0.05 % Proclin-300, 50 % glycerol.
Preservative:	ProClin
Precaution of Use:	This product contains ProClin: a POISONOUS AND HAZARDOUS SUBSTANCE which should be handled by trained staff only.
Storage:	4 °C, -20 °C
Storage Comment:	Store at 4°C for frequent use. Stored at -20°C in a manual defrost freezer for two year without detectable loss of activity. Avoid repeated freeze-thaw cycles.
Expiry Date:	24 months



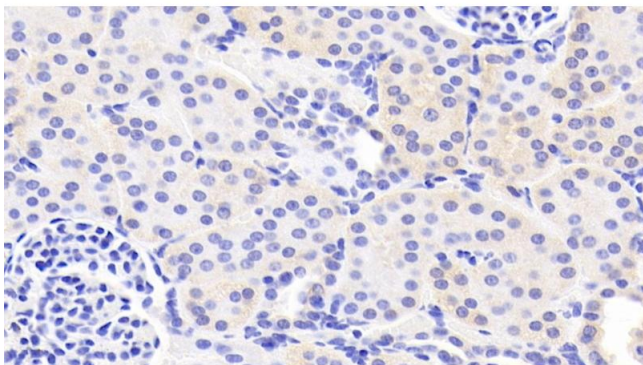
#### Immunohistochemistry

**Image 1.** Detection of LAMa3 in Human Liver cancer Tissue using Polyclonal Antibody to Laminin Alpha 3 (LAMa3)



#### Western Blotting

**Image 2.** Detection of Recombinant LAMa3, Human using Polyclonal Antibody to Laminin Alpha 3 (LAMa3)



#### Immunohistochemistry

**Image 3.** Detection of LAMa3 in Human Kidney Tissue using Polyclonal Antibody to Laminin Alpha 3 (LAMa3)