



Datasheet for ABIN7434839

## anti-Butyrylcholinesterase antibody (AA 29-150)



[Go to Product page](#)

### 7 Images

#### Overview

|                      |  |
|----------------------|--|
| Quantity:            | 100 µL   |
| Target:              | Butyrylcholinesterase (BCHE)   |
| Binding Specificity: | AA 29-150  |
| Reactivity:          | Human  |
| Host:                | Rabbit   |
| Clonality:           | Polyclonal   |
| Conjugate:           | This Butyrylcholinesterase antibody is un-conjugated   |
| Application:         | Western Blotting (WB), Immunohistochemistry (IHC), Immunoprecipitation (IP), Immunocytochemistry (ICC) |

#### Product Details

|                   |  |
|-------------------|--|
| Purpose:          | Polyclonal Antibody to Butyrylcholinesterase (BCHE)  |
| Immunogen:        | Recombinant Butyrylcholinesterase (BCHE) corresponding to Glu29~Thr150 with N-terminal His Tag   |
| Isotype:          | IgG  |
| Specificity:      | The antibody is a rabbit polyclonal antibody raised against BCHE. It has been selected for its ability to recognize BCHE in immunohistochemical staining and western blotting. |
| Cross-Reactivity: | Rat  |
| Purification:     | Antigen-specific affinity chromatography followed by Protein A affinity chromatography   |

## Target Details

---

|                   |  |
|-------------------|--|
| Target:           | Butyrylcholinesterase (BCHE)   |
| Alternative Name: | Butyrylcholinesterase ( <a href="#">BCHE Products</a> )  |
| Background:       | BuChE, CHE1, E1, Pseudocholinesterase, Cholinesterase, Acylcholine acylhydrolase, Butyrylcholine esterase, Choline esterase II |
| Pathways:         | <a href="#">Peptide Hormone Metabolism</a>   |

## Application Details

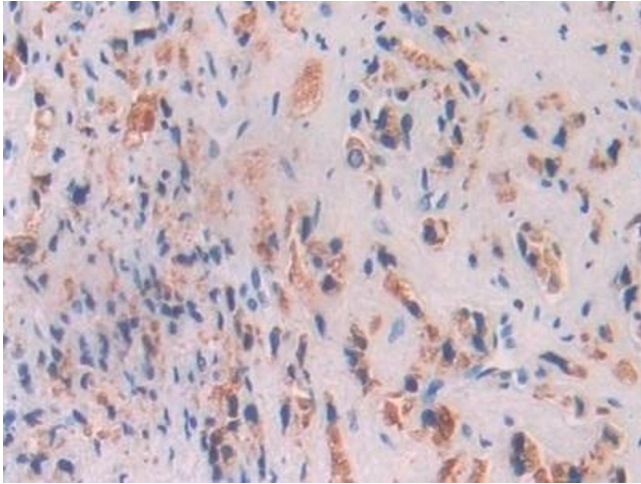
---

|                    |   |
|--------------------|---|
| Application Notes: | Western blotting: 0.5-2 µg/mL Immunocytochemistry in formalin fixed cells: 5-20 µg/mL Immunohistochemistry in formalin fixed frozen section: 5-20 µg/mL Immunohistochemistry in paraffin section: 5-20 µg/mL Enzyme-linked Immunosorbent Assay: 0.05-2 µg/mL Optimal working dilutions must be determined by end user.              |
| Comment:           | The thermal stability is described by the loss rate. The loss rate was determined by accelerated thermal degradation test, that is, incubate the protein at 37°C for 48h, and no obvious degradation and precipitation were observed. The loss rate is less than 5% within the expiration date under appropriate storage condition. |
| Restrictions:      | For Research Use only   |

## Handling

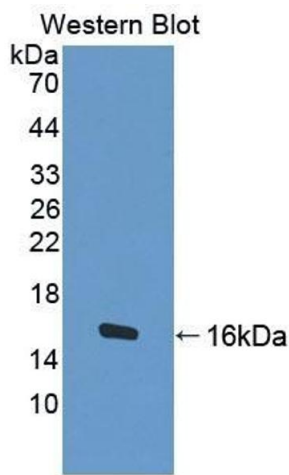
---

|                    |   |
|--------------------|---|
| Format:            | Liquid  |
| Buffer:            | 0.01M PBS, pH 7.4, containing 0.05 % Proclin-300, 50 % glycerol.  |
| Preservative:      | ProClin   |
| Precaution of Use: | This product contains ProClin: a POISONOUS AND HAZARDOUS SUBSTANCE which should be handled by trained staff only.   |
| Storage:           | 4 °C,-20 °C   |
| Storage Comment:   | Store at 4°C for frequent use. Stored at -20°C in a manual defrost freezer for two year without detectable loss of activity. Avoid repeated freeze-thaw cycles. |
| Expiry Date:       | 24 months   |



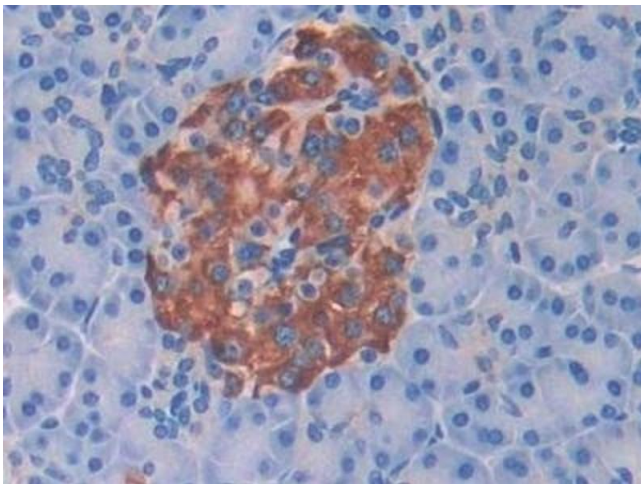
#### Immunohistochemistry

**Image 1.** Detection of BCHE in Human Prostate cancer Tissue using Polyclonal Antibody to Butyrylcholinesterase (BCHE)



#### Western Blotting

**Image 2.** Detection of Recombinant BCHE, Human using Polyclonal Antibody to Butyrylcholinesterase (BCHE)



#### Immunohistochemistry

**Image 3.** Detection of BCHE in Human Pancreas Tissue using Polyclonal Antibody to Butyrylcholinesterase (BCHE)

Please check the [product details page](#) for more images. Overall 7 images are available for ABIN7434839.