

Datasheet for ABIN7434860
anti-Galectin 10 antibody (AA 2-142)

6 Images

[Go to Product page](#)

Overview

Quantity:	100 µL
Target:	Galectin 10 (CLC)
Binding Specificity:	AA 2-142
Reactivity:	Human
Host:	Rabbit
Clonality:	Polyclonal
Conjugate:	This Galectin 10 antibody is un-conjugated
Application:	Western Blotting (WB), Immunohistochemistry (IHC), Immunoprecipitation (IP), Immunocytochemistry (ICC)

Product Details

Purpose:	Polyclonal Antibody to Charcot Leyden Crystal Protein (CLC)
Immunogen:	Recombinant Charcot Leyden Crystal Protein (CLC) corresponding to Ser2~Arg142 with N-terminal His Tag
Isotype:	IgG
Specificity:	The antibody is a rabbit polyclonal antibody raised against CLC. It has been selected for its ability to recognize CLC in immunohistochemical staining and western blotting.
Purification:	Antigen-specific affinity chromatography followed by Protein A affinity chromatography

Target Details

Target:	Galectin 10 (CLC)
---------	-------------------

Target Details

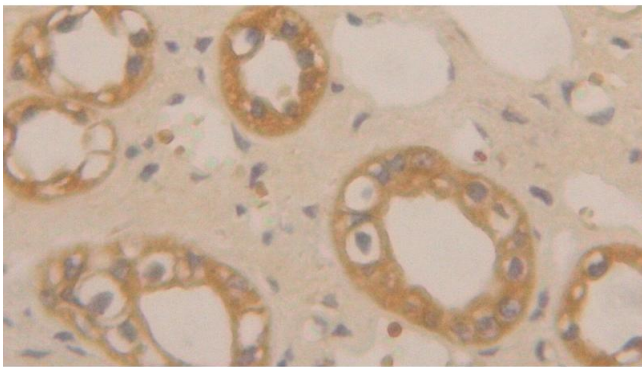
Alternative Name:	Charcot Leyden Crystal Protein (CLC Products)
Background:	LGALS10, LPPL, Eosinophil Lysophospholipase, Lysolecithin Acylhydrolase, Galectin 10
Pathways:	Regulation of Leukocyte Mediated Immunity , Positive Regulation of Immune Effector Process , Production of Molecular Mediator of Immune Response

Application Details

Application Notes:	Western blotting: 0.5-3 µg/mL Immunohistochemistry: 5-30 µg/mL Immunocytochemistry: 5-30 µg/mL Optimal working dilutions must be determined by end user.
Comment:	The thermal stability is described by the loss rate. The loss rate was determined by accelerated thermal degradation test, that is, incubate the protein at 37°C for 48h, and no obvious degradation and precipitation were observed. The loss rate is less than 5% within the expiration date under appropriate storage condition.
Restrictions:	For Research Use only

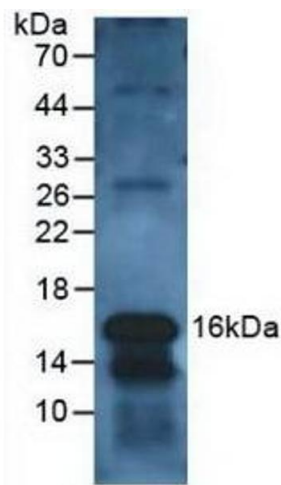
Handling

Format:	Liquid
Buffer:	PBS, pH 7.4, containing 0.02 % Sodium azide, 50 % glycerol.
Preservative:	Sodium azide
Precaution of Use:	This product contains Sodium azide: a POISONOUS AND HAZARDOUS SUBSTANCE which should be handled by trained staff only.
Storage:	4 °C, -20 °C
Storage Comment:	Store at 4°C for frequent use. Stored at -20°C in a manual defrost freezer for two year without detectable loss of activity. Avoid repeated freeze-thaw cycles.
Expiry Date:	24 months



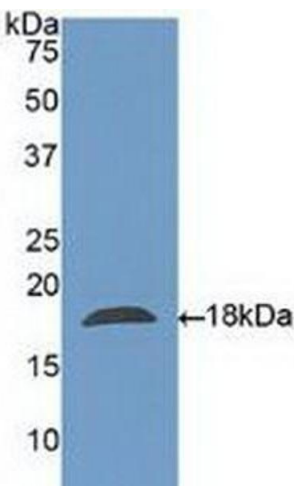
Immunohistochemistry

Image 1. Detection of CLC in Human Kidney Tissue using Polyclonal Antibody to Charcot Leyden Crystal Protein (CLC)



Western Blotting

Image 2. Detection of CLC in Human Leukocyte Cells using Polyclonal Antibody to Charcot Leyden Crystal Protein (CLC)



Western Blotting

Image 3. Detection of Recombinant CLC, Human using Polyclonal Antibody to Charcot Leyden Crystal Protein (CLC)

Please check the [product details page](#) for more images. Overall 6 images are available for ABIN7434860.