

Datasheet for ABIN7434869
anti-CLIC1 antibody (AA 79-241)

4 Images

[Go to Product page](#)

Overview

Quantity:	100 µL
Target:	CLIC1
Binding Specificity:	AA 79-241
Reactivity:	Human
Host:	Rabbit
Clonality:	Polyclonal
Conjugate:	This CLIC1 antibody is un-conjugated
Application:	Western Blotting (WB), Immunohistochemistry (IHC), Immunocytochemistry (ICC), Immunoprecipitation (IP)

Product Details

Purpose:	Polyclonal Antibody to Chloride Intracellular Channel Protein 1 (CLIC1)
Immunogen:	Recombinant Chloride Intracellular Channel Protein 1 (CLIC1) corresponding to Lys79~Lys241 with N-terminal His Tag
Isotype:	IgG
Specificity:	The antibody is a rabbit polyclonal antibody raised against CLIC1. It has been selected for its ability to recognize CLIC1 in immunohistochemical staining and western blotting.
Cross-Reactivity:	Mouse
Purification:	Antigen-specific affinity chromatography followed by Protein A affinity chromatography

Target Details

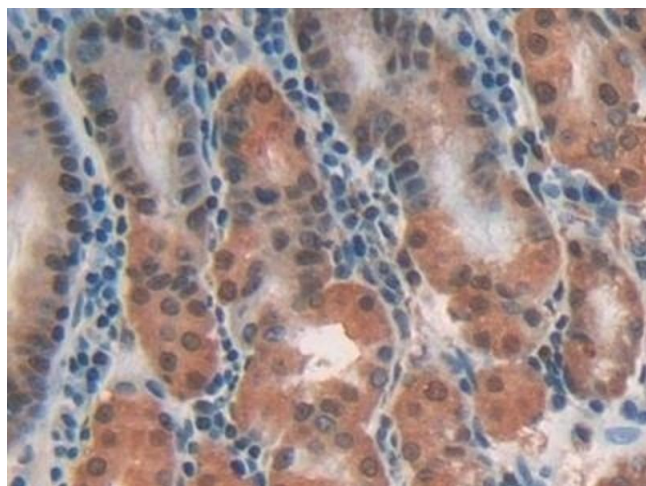
Target:	CLIC1
Alternative Name:	Chloride Intracellular Channel Protein 1 (CLIC1 Products)
Background:	G6, NCC27, p64CLCP, hRNCC, Chloride channel ABP, Nuclear chloride ion channel 27, Regulatory nuclear chloride ion channel protein

Application Details

Application Notes:	Western blotting: 0.5-2 µg/mL 1:240-1000 Immunohistochemistry: 5-20 µg/mL 1:24-100 Immunocytochemistry: 5-20 µg/mL 1:24-100 Optimal working dilutions must be determined by end user.
Comment:	The thermal stability is described by the loss rate. The loss rate was determined by accelerated thermal degradation test, that is, incubate the protein at 37°C for 48h, and no obvious degradation and precipitation were observed. The loss rate is less than 5% within the expiration date under appropriate storage condition.
Restrictions:	For Research Use only

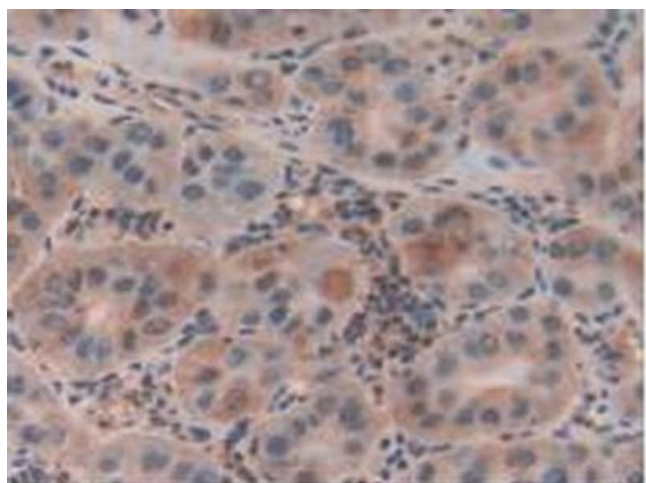
Handling

Format:	Liquid
Buffer:	PBS, pH 7.4, containing 0.02 % Sodium azide, 50 % glycerol.
Preservative:	Sodium azide
Precaution of Use:	This product contains Sodium azide: a POISONOUS AND HAZARDOUS SUBSTANCE which should be handled by trained staff only.
Storage:	4 °C, -20 °C
Storage Comment:	Store at 4°C for frequent use. Stored at -20°C in a manual defrost freezer for two year without detectable loss of activity. Avoid repeated freeze-thaw cycles.
Expiry Date:	24 months



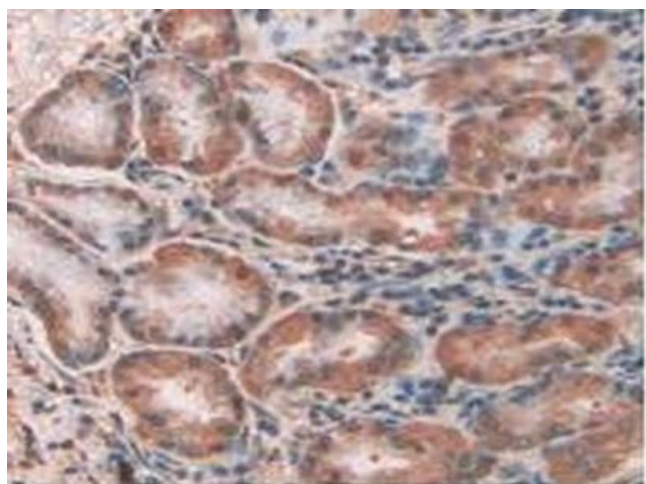
Immunohistochemistry

Image 1. Detection of CLIC1 in Human Stomach Tissue using Polyclonal Antibody to Chloride Intracellular Channel Protein 1 (CLIC1)



Immunohistochemistry

Image 2. Detection of CLIC1 in Human Liver Cancer Tissue using Polyclonal Antibody to Chloride Intracellular Channel Protein 1 (CLIC1)



Immunohistochemistry

Image 3. Detection of CLIC1 in Human Kidney Tissue using Polyclonal Antibody to Chloride Intracellular Channel Protein 1 (CLIC1)

Please check the [product details page](#) for more images. Overall 4 images are available for ABIN7434869.