

Datasheet for ABIN7434887
anti-Catalase antibody (AA 401-523)

6 Images

[Go to Product page](#)

Overview

Quantity:	100 µL
Target:	Catalase (CAT)
Binding Specificity:	AA 401-523
Reactivity:	Human
Host:	Rabbit
Clonality:	Polyclonal
Conjugate:	This Catalase antibody is un-conjugated
Application:	Western Blotting (WB), Immunohistochemistry (IHC), Immunoprecipitation (IP), Immunocytochemistry (ICC)

Product Details

Purpose:	Polyclonal Antibody to Catalase (CAT)
Immunogen:	Recombinant Catalase (CAT) corresponding to Ala401~Glu523 with N-terminal His Tag
Isotype:	IgG
Specificity:	The antibody is a rabbit polyclonal antibody raised against CAT. It has been selected for its ability to recognize CAT in immunohistochemical staining and western blotting.
Cross-Reactivity:	Mouse, Rat
Purification:	Antigen-specific affinity chromatography followed by Protein A affinity chromatography

Target Details

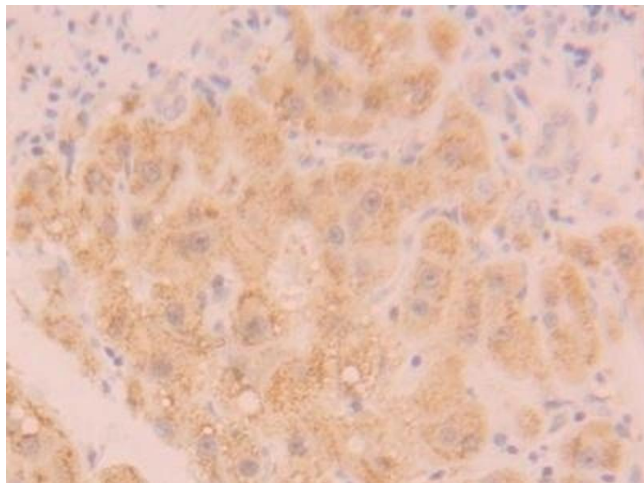
Target:	Catalase (CAT)
Alternative Name:	Catalase (CAT Products)
Pathways:	Cellular Glucan Metabolic Process , Cell RedoxHomeostasis , Photoperiodism

Application Details

Application Notes:	Western blotting: 0.5-2 µg/mL Immunohistochemistry: 5-20 µg/mL Immunocytochemistry: 5-20 µg/mL Optimal working dilutions must be determined by end user.
Comment:	The thermal stability is described by the loss rate. The loss rate was determined by accelerated thermal degradation test, that is, incubate the protein at 37°C for 48h, and no obvious degradation and precipitation were observed. The loss rate is less than 5% within the expiration date under appropriate storage condition.
Restrictions:	For Research Use only

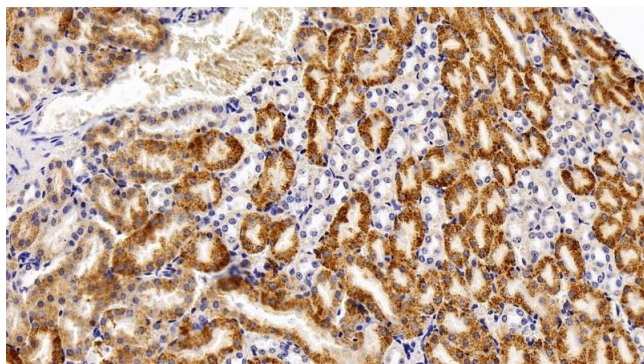
Handling

Format:	Liquid
Buffer:	PBS, pH 7.4, containing 0.02 % Sodium azide, 50 % glycerol.
Preservative:	Sodium azide
Precaution of Use:	This product contains Sodium azide: a POISONOUS AND HAZARDOUS SUBSTANCE which should be handled by trained staff only.
Storage:	4 °C,-20 °C
Storage Comment:	Store at 4°C for frequent use. Stored at -20°C in a manual defrost freezer for two year without detectable loss of activity. Avoid repeated freeze-thaw cycles.
Expiry Date:	24 months



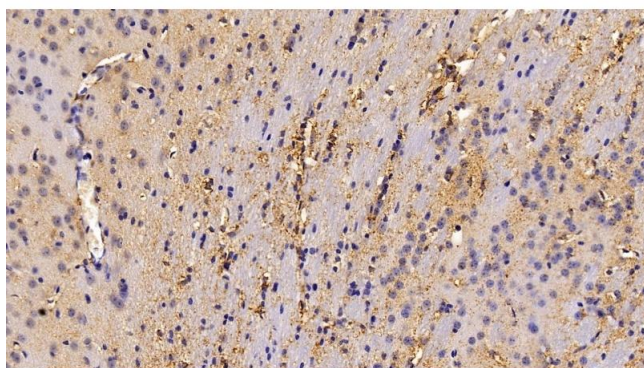
Immunohistochemistry

Image 1. Detection of CAT in Human Liver Tissue using Polyclonal Antibody to Catalase (CAT)



Immunohistochemistry

Image 2. Detection of CAT in Mouse Kidney Tissue using Polyclonal Antibody to Catalase (CAT)



Immunohistochemistry

Image 3. Detection of CAT in Mouse Cerebrum Tissue using Polyclonal Antibody to Catalase (CAT)

Please check the [product details page](#) for more images. Overall 6 images are available for ABIN7434887.