



[Go to Product page](#)

Datasheet for ABIN7434947
anti-Fibulin 1 antibody (AA 176-398)

7 Images

Overview

Quantity:	100 µL
Target:	Fibulin 1 (FBLN1)
Binding Specificity:	AA 176-398
Reactivity:	Human
Host:	Rabbit
Clonality:	Polyclonal
Conjugate:	This Fibulin 1 antibody is un-conjugated
Application:	Western Blotting (WB), Immunohistochemistry (IHC), Immunoprecipitation (IP), Immunocytochemistry (ICC)

Product Details

Purpose:	Polyclonal Antibody to Fibulin 1 (FBLN1)
Immunogen:	Recombinant Fibulin 1 (FBLN1) corresponding to Leu176~Val398 (Accession # P23142)
Isotype:	IgG
Specificity:	The antibody is a rabbit polyclonal antibody raised against FBLN1. It has been selected for its ability to recognize FBLN1 in immunohistochemical staining and western blotting.
Cross-Reactivity:	Rat
Purification:	Antigen-specific affinity chromatography followed by Protein A affinity chromatography

Target Details

Target: Fibulin 1 (FBLN1)

Alternative Name: Fibulin 1 ([FBLN1 Products](#))

Application Details

Application Notes: Western blotting: 0.5-2 µg/mL Immunohistochemistry: 5-20 µg/mL Immunocytochemistry: 5-20 µg/mL Optimal working dilutions must be determined by end user.

Comment: The thermal stability is described by the loss rate. The loss rate was determined by accelerated thermal degradation test, that is, incubate the protein at 37°C for 48h, and no obvious degradation and precipitation were observed. The loss rate is less than 5% within the expiration date under appropriate storage condition.

Restrictions: For Research Use only

Handling

Format: Liquid

Buffer: 0.01M PBS, pH 7.4, containing 0.05 % Proclin-300, 50 % glycerol.

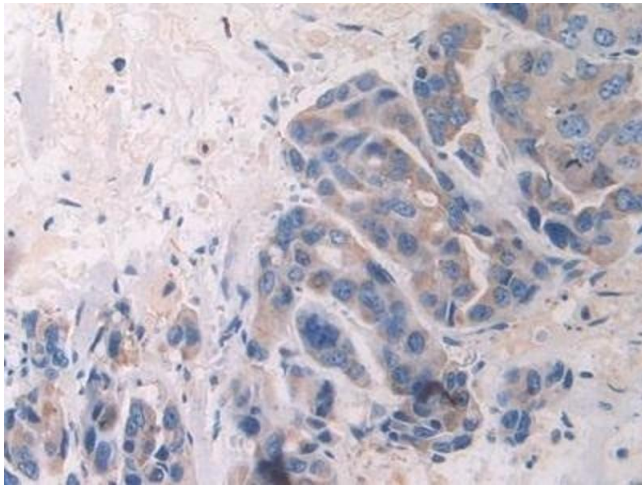
Preservative: ProClin

Precaution of Use: This product contains ProClin: a POISONOUS AND HAZARDOUS SUBSTANCE which should be handled by trained staff only.

Storage: 4 °C,-20 °C

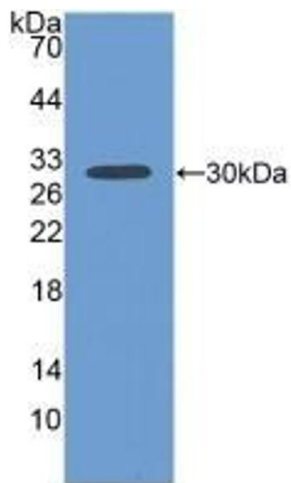
Storage Comment: Store at 4°C for frequent use. Stored at -20°C in a manual defrost freezer for two year without detectable loss of activity. Avoid repeated freeze-thaw cycles.

Expiry Date: 24 months



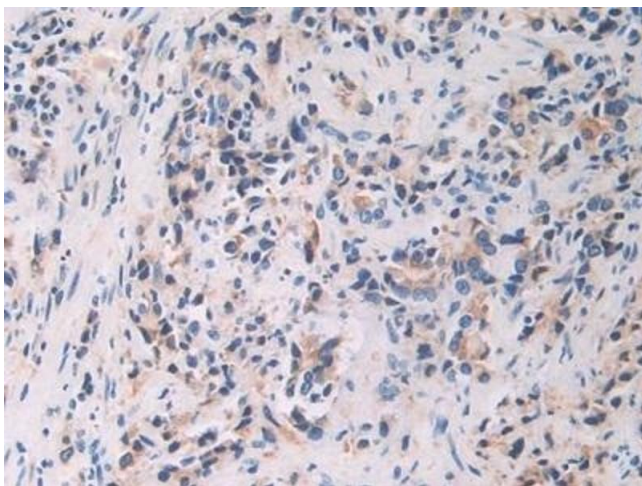
Immunohistochemistry

Image 1. Detection of FBLN1 in Human Breast cancer Tissue using Polyclonal Antibody to Fibulin 1 (FBLN1)



Western Blotting

Image 2. Detection of Recombinant FBLN1, Human using Polyclonal Antibody to Fibulin 1 (FBLN1)



Immunohistochemistry

Image 3. Detection of FBLN1 in Human Prostate cancer Tissue using Polyclonal Antibody to Fibulin 1 (FBLN1)

Please check the [product details page](#) for more images. Overall 7 images are available for ABIN7434947.