

Datasheet for ABIN7434992  
**anti-KLC1 antibody (AA 1-254)**

## 5 Images

[Go to Product page](#)

## Overview

Quantity:	100 µL
Target:	KLC1
Binding Specificity:	AA 1-254
Reactivity:	Human
Host:	Rabbit
Clonality:	Polyclonal
Conjugate:	This KLC1 antibody is un-conjugated
Application:	Western Blotting (WB), Immunohistochemistry (IHC), Immunoprecipitation (IP), Immunocytochemistry (ICC)

## Product Details

Purpose:	Polyclonal Antibody to Kinesin Light Chain 1 (KLC1)
Immunogen:	Recombinant Kinesin Light Chain 1 (KLC1) corresponding to Met1~Val254 with N-terminal His Tag
Isotype:	IgG
Specificity:	The antibody is a rabbit polyclonal antibody raised against KLC1. It has been selected for its ability to recognize KLC1 in immunohistochemical staining and western blotting.
Cross-Reactivity:	Mouse, Rat
Purification:	Antigen-specific affinity chromatography followed by Protein A affinity chromatography

## Target Details

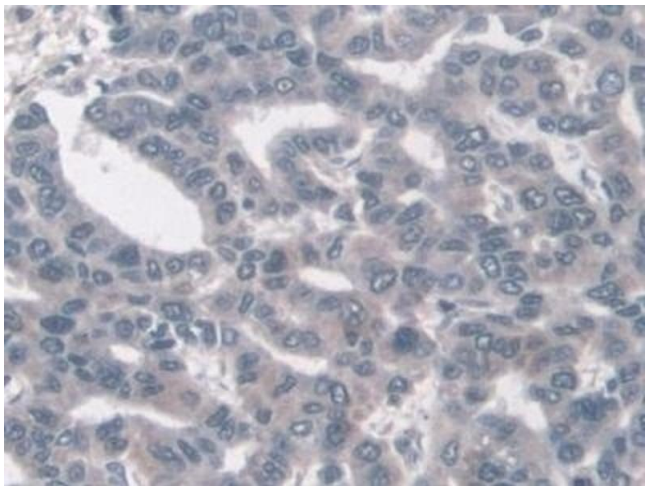
Target:	KLC1
Alternative Name:	Kinesin Light Chain 1 ( <a href="#">KLC1 Products</a> )
Background:	KLC, KNS2, KNS2A, hKLC1S, hKLC1N, hKLC1P, hKLC1G, hKLC1R, hKLC1J, hKLC1B, Kinesin 2
Pathways:	<a href="#">Ribonucleoprotein Complex Subunit Organization</a>

## Application Details

Application Notes:	Western blotting: 0.5-2 µg/mL Immunocytochemistry in formalin fixed cells: 5-20 µg/mL Immunohistochemistry in formalin fixed frozen section: 5-20 µg/mL Immunohistochemistry in paraffin section: 5-20 µg/mL Enzyme-linked Immunosorbent Assay: 0.05-2 µg/mL Optimal working dilutions must be determined by end user.
Comment:	The thermal stability is described by the loss rate. The loss rate was determined by accelerated thermal degradation test, that is, incubate the protein at 37°C for 48h, and no obvious degradation and precipitation were observed. The loss rate is less than 5% within the expiration date under appropriate storage condition.
Restrictions:	For Research Use only

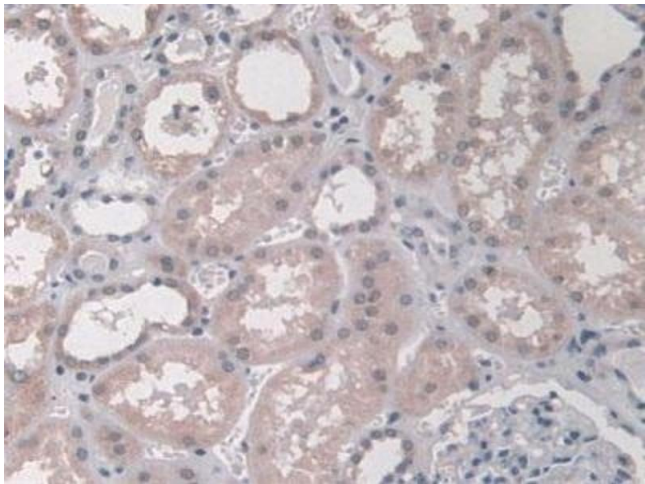
## Handling

Format:	Liquid
Buffer:	0.01M PBS, pH 7.4, containing 0.05 % Proclin-300, 50 % glycerol.
Preservative:	ProClin
Precaution of Use:	This product contains ProClin: a POISONOUS AND HAZARDOUS SUBSTANCE which should be handled by trained staff only.
Storage:	4 °C, -20 °C
Storage Comment:	Store at 4°C for frequent use. Stored at -20°C in a manual defrost freezer for two year without detectable loss of activity. Avoid repeated freeze-thaw cycles.
Expiry Date:	24 months



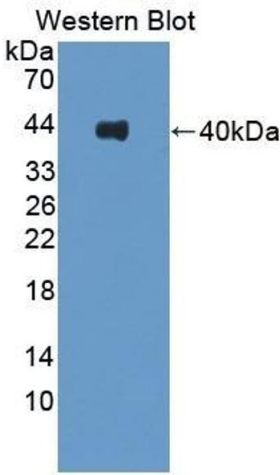
**Immunohistochemistry**

**Image 1.** Detection of KLC1 in Human Liver cancer Tissue using Polyclonal Antibody to Kinesin Light Chain 1 (KLC1)



**Immunohistochemistry**

**Image 2.** Detection of KLC1 in Human Kidney Tissue using Polyclonal Antibody to Kinesin Light Chain 1 (KLC1)



**Western Blotting**

**Image 3.** Detection of Recombinant KNS2, Human using Polyclonal Antibody to Kinesin Light Chain 1 (KLC1)

Please check the [product details page](#) for more images. Overall 5 images are available for ABIN7434992.