



[Go to Product page](#)

Datasheet for ABIN7434998

anti-KISS1 antibody

1 Image

Overview

Quantity:	100 µL
Target:	KISS1
Reactivity:	Rat
Host:	Rabbit
Clonality:	Polyclonal
Conjugate:	This KISS1 antibody is un-conjugated
Application:	Western Blotting (WB), Immunohistochemistry (IHC), Immunoprecipitation (IP), Immunocytochemistry (ICC)

Product Details

Purpose:	Polyclonal Antibody to Kisspeptin 1 (KISS1)
Immunogen:	Recombinant Kisspeptin 1 (KISS1) corresponding to N-terminal His Tag
Isotype:	IgG
Specificity:	The antibody is a rabbit polyclonal antibody raised against KISS1. It has been selected for its ability to recognize KISS1 in immunohistochemical staining and western blotting.
Purification:	Antigen-specific affinity chromatography followed by Protein A affinity chromatography

Target Details

Target:	KISS1
Alternative Name:	Kisspeptin 1 (KISS1 Products)

Target Details

Background: Metastin, KiSS-1 Metastasis-Suppressor

Pathways: [Positive Regulation of Peptide Hormone Secretion](#)

Application Details

Application Notes: Western blotting: 0.5-2 µg/mL Immunocytochemistry in formalin fixed cells: 5-20 µg/mL Immunohistochemistry in formalin fixed frozen section: 5-20 µg/mL Immunohistochemistry in paraffin section: 5-20 µg/mL Enzyme-linked Immunosorbent Assay: 0.05-2 µg/mL Optimal working dilutions must be determined by end user.

Comment: The thermal stability is described by the loss rate. The loss rate was determined by accelerated thermal degradation test, that is, incubate the protein at 37°C for 48h, and no obvious degradation and precipitation were observed. The loss rate is less than 5% within the expiration date under appropriate storage condition.

Restrictions: For Research Use only

Handling

Format: Liquid

Buffer: PBS, pH 7.4, containing 0.02 % Sodium azide, 50 % glycerol.

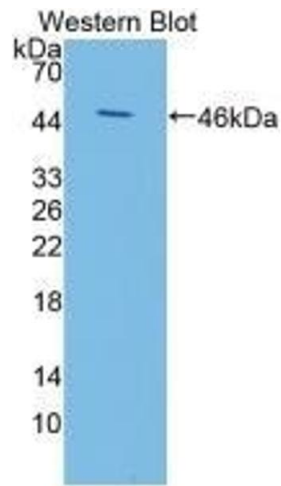
Preservative: Sodium azide

Precaution of Use: This product contains Sodium azide: a POISONOUS AND HAZARDOUS SUBSTANCE which should be handled by trained staff only.

Storage: 4 °C,-20 °C

Storage Comment: Store at 4°C for frequent use. Stored at -20°C in a manual defrost freezer for two year without detectable loss of activity. Avoid repeated freeze-thaw cycles.

Expiry Date: 24 months



Western Blotting

Image 1. Detection of recombinant KISS1 using Polyclonal Antibody to Kisspeptin 1 (KISS1)