

Datasheet for ABIN7435013
anti-Lacritin antibody (AA 20-138)

3 Images

[Go to Product page](#)

Overview

Quantity:	100 µL
Target:	Lacritin (LACRT)
Binding Specificity:	AA 20-138
Reactivity:	Human
Host:	Rabbit
Clonality:	Polyclonal
Conjugate:	This Lacritin antibody is un-conjugated
Application:	Immunohistochemistry (IHC), Western Blotting (WB), Immunoprecipitation (IP), Immunocytochemistry (ICC)

Product Details

Purpose:	Polyclonal Antibody to Lacritin (LACRT)
Immunogen:	Recombinant Lacritin (LACRT) corresponding to Glu20~Ala138 with N-terminal His and GST Tag
Isotype:	IgG
Specificity:	The antibody is a rabbit polyclonal antibody raised against LACRT. It has been selected for its ability to recognize LACRT in immunohistochemical staining and western blotting.
Cross-Reactivity:	Mouse
Purification:	Antigen-specific affinity chromatography followed by Protein A affinity chromatography

Target Details

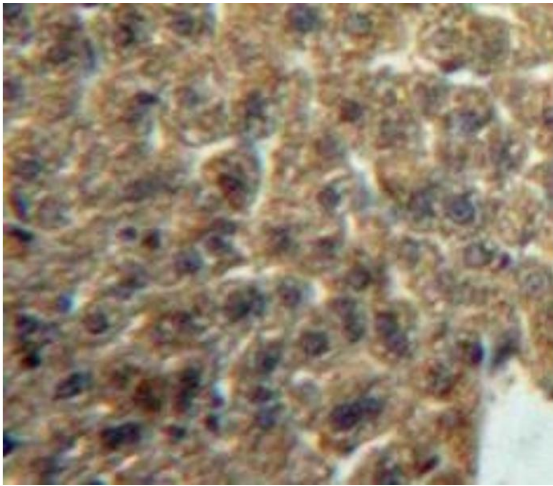
Target:	Lacritin (LACRT)
Alternative Name:	Lacritin (LACRT Products)
Background:	Extracellular glycoprotein lacritin

Application Details

Application Notes:	Western blotting: 0.5-2 µg/mL Immunohistochemistry: 5-20 µg/mL Immunocytochemistry: 5-20 µg/mL Optimal working dilutions must be determined by end user.
Comment:	The thermal stability is described by the loss rate. The loss rate was determined by accelerated thermal degradation test, that is, incubate the protein at 37°C for 48h, and no obvious degradation and precipitation were observed. The loss rate is less than 5% within the expiration date under appropriate storage condition.
Restrictions:	For Research Use only

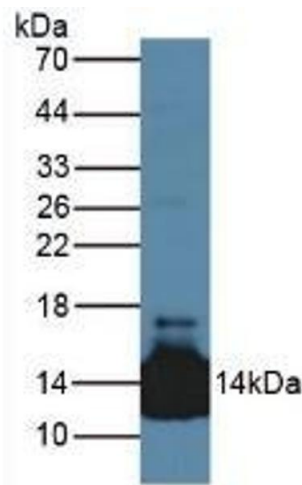
Handling

Format:	Liquid
Buffer:	PBS, pH 7.4, containing 0.02 % Sodium azide, 50 % glycerol.
Preservative:	Sodium azide
Precaution of Use:	This product contains Sodium azide: a POISONOUS AND HAZARDOUS SUBSTANCE which should be handled by trained staff only.
Storage:	4 °C,-20 °C
Storage Comment:	Store at 4°C for frequent use. Stored at -20°C in a manual defrost freezer for two year without detectable loss of activity. Avoid repeated freeze-thaw cycles.
Expiry Date:	24 months



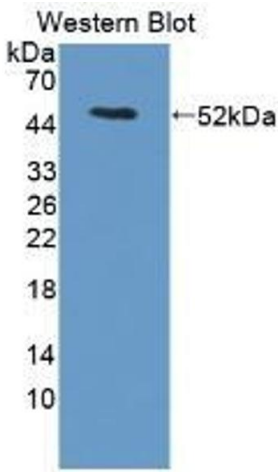
Immunohistochemistry

Image 1. #VALUE!



Western Blotting

Image 2. Detection of LACRT in Mouse Heart Tissue using Polyclonal Antibody to Lacritin (LACRT)



Western Blotting

Image 3. Detection of Recombinant LACRT, Human using Polyclonal Antibody to Lacritin (LACRT)