

Datasheet for ABIN7435055
anti-MCL-1 antibody (AA 6-328)



[Go to Product page](#)

3 Images

Overview

Quantity:	100 µL
Target:	MCL-1 (MCL1)
Binding Specificity:	AA 6-328
Reactivity:	Human
Host:	Rabbit
Clonality:	Polyclonal
Application:	Western Blotting (WB), Immunohistochemistry (IHC), Immunocytochemistry (ICC), Immunoprecipitation (IP)

Product Details

Purpose:	Polyclonal Antibody to Induced Myeloid Leukemia Cell Differentiation Protein Mcl-1 (MCL1)
Immunogen:	Recombinant Induced Myeloid Leukemia Cell Differentiation Protein Mcl-1 (MCL1) correspondong to Arg6~Ile328 with N-terminal His Tag
Isotype:	IgG
Specificity:	The antibody is a rabbit polyclonal antibody raised against MCL1. It has been selected for its ability to recognize MCL1 in immunohistochemical staining and western blotting.
Purification:	Antigen-specific affinity chromatography followed by Protein A affinity chromatography

Target Details

Target:	MCL-1 (MCL1)
Alternative Name:	Induced Myeloid Leukemia Cell Differentiation Protein Mcl-1 (MCL1 Products)

Target Details

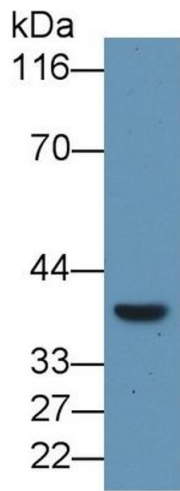
Background:	EAT, MCL1L, MCL1S, BCL2L3, TM, Myeloid Cell Leukemia Sequence 1, Bcl2 Related, Bcl-2-like protein 3, Bcl-2-related protein EAT/mcl1, mcl1/EAT
Pathways:	MAPK Signaling

Application Details

Application Notes:	Western blotting: 0.5-2 µg/mL Immunohistochemistry: 5-20 µg/mL Immunocytochemistry: 5-20 µg/mL Optimal working dilutions must be determined by end user.
Comment:	The thermal stability is described by the loss rate. The loss rate was determined by accelerated thermal degradation test, that is, incubate the protein at 37°C for 48h, and no obvious degradation and precipitation were observed. The loss rate is less than 5% within the expiration date under appropriate storage condition.
Restrictions:	For Research Use only

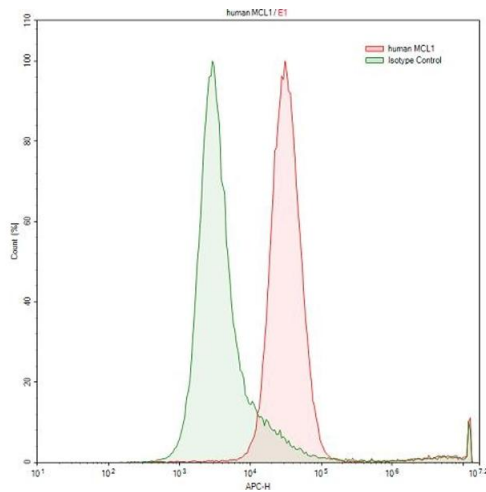
Handling

Format:	Liquid
Buffer:	0.01M PBS, pH 7.4, containing 0.05 % Proclin-300, 50 % glycerol.
Preservative:	ProClin
Precaution of Use:	This product contains ProClin: a POISONOUS AND HAZARDOUS SUBSTANCE which should be handled by trained staff only.
Storage:	4 °C,-20 °C
Storage Comment:	Store at 4°C for frequent use. Stored at -20°C in a manual defrost freezer for two year without detectable loss of activity. Avoid repeated freeze-thaw cycles.
Expiry Date:	24 months



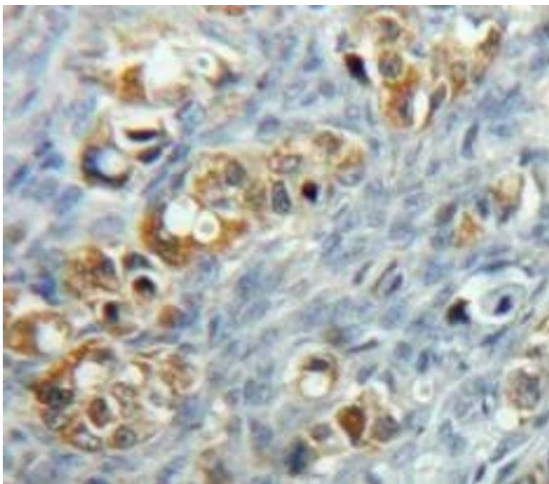
Western Blotting

Image 1. Detection of MCL1 in Raji cell lysate using Polyclonal Antibody to Induced Myeloid Leukemia Cell Differentiation Protein Mcl-1 (MCL1)



Flow Cytometry

Image 2. Detection of MCL1 in Raji human Burkitt's lymphoma cell line using Polyclonal Antibody to Induced Myeloid Leukemia Cell Differentiation Protein Mcl-1 (MCL1)



Immunohistochemistry

Image 3. #VALUE!