



[Go to Product page](#)

Datasheet for ABIN7435109
anti-PMP22 antibody (AA 1-64)

2 Images

Overview

Quantity:	100 µL
Target:	PMP22
Binding Specificity:	AA 1-64
Reactivity:	Mouse
Host:	Rabbit
Clonality:	Polyclonal
Application:	Western Blotting (WB), Immunohistochemistry (IHC), Immunoprecipitation (IP), Immunocytochemistry (ICC)

Product Details

Purpose:	Polyclonal Antibody to Peripheral Myelin Protein 22 (PMP22)
Immunogen:	Recombinant Peripheral Myelin Protein 22 (PMP22) corresponding to Met1~Ser64 with N-terminal His and GST Tag
Isotype:	IgG
Specificity:	The antibody is a rabbit polyclonal antibody raised against PMP22. It has been selected for its ability to recognize PMP22 in immunohistochemical staining and western blotting.
Cross-Reactivity:	Rat
Purification:	Antigen-specific affinity chromatography followed by Protein A affinity chromatography

Target Details

Target:	PMP22
---------	-------

Target Details

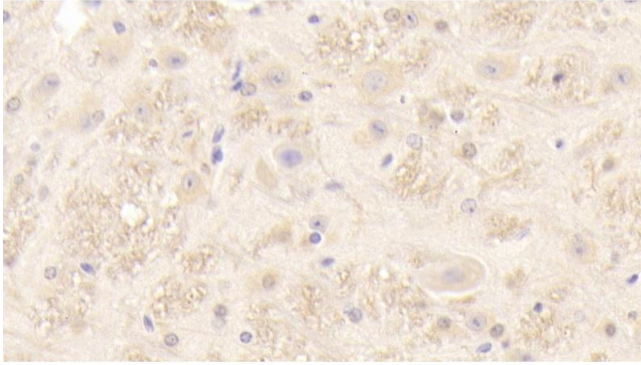
Alternative Name:	Peripheral Myelin Protein 22 (PMP22 Products)
Background:	DSS, CMT1A, CMT1E, GAS3, HMSNIA, HNPP, Sp110, Growth arrest-specific protein 3

Application Details

Application Notes:	Western blotting: 0.5-2 µg/mL Immunohistochemistry: 5-20 µg/mL Immunocytochemistry: 5-20 µg/mL Optimal working dilutions must be determined by end user.
Comment:	The thermal stability is described by the loss rate. The loss rate was determined by accelerated thermal degradation test, that is, incubate the protein at 37°C for 48h, and no obvious degradation and precipitation were observed. The loss rate is less than 5% within the expiration date under appropriate storage condition.
Restrictions:	For Research Use only

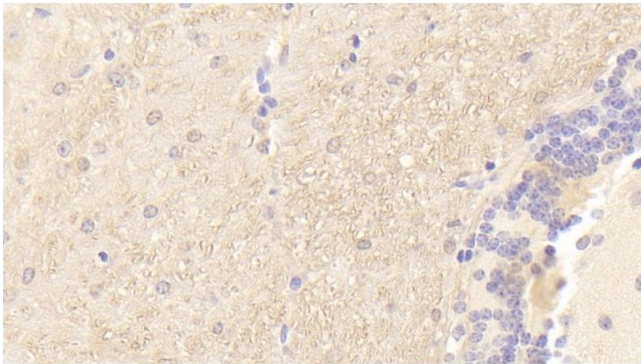
Handling

Format:	Liquid
Buffer:	PBS, pH 7.4, containing 0.02 % Sodium azide, 50 % glycerol.
Preservative:	Sodium azide
Precaution of Use:	This product contains Sodium azide: a POISONOUS AND HAZARDOUS SUBSTANCE which should be handled by trained staff only.
Storage:	4 °C,-20 °C
Storage Comment:	Store at 4°C for frequent use. Stored at -20°C in a manual defrost freezer for two year without detectable loss of activity. Avoid repeated freeze-thaw cycles.
Expiry Date:	24 months



Immunohistochemistry

Image 1. Detection of PMP22 in Mouse Spinal cord Tissue using Polyclonal Antibody to Peripheral Myelin Protein 22 (PMP22)



Immunohistochemistry

Image 2. Detection of PMP22 in Mouse Cerebellum Tissue using Polyclonal Antibody to Peripheral Myelin Protein 22 (PMP22)