

Datasheet for ABIN7435217
anti-SYNPO antibody (AA 97-300)

3 Images

[Go to Product page](#)

Overview

Quantity:	100 µL
Target:	SYNPO
Binding Specificity:	AA 97-300
Reactivity:	Human
Host:	Rabbit
Clonality:	Polyclonal
Conjugate:	This SYNPO antibody is un-conjugated
Application:	Western Blotting (WB), Immunohistochemistry (IHC), Immunoprecipitation (IP), Immunocytochemistry (ICC)

Product Details

Purpose:	Polyclonal Antibody to Synaptopodin (SYNPO)
Immunogen:	Recombinant Synaptopodin (SYNPO) corresponding to Asn97~Met300 with N-terminal His and GST Tag
Isotype:	IgG
Specificity:	The antibody is a rabbit polyclonal antibody raised against SYNPO. It has been selected for its ability to recognize SYNPO in immunohistochemical staining and western blotting.
Cross-Reactivity:	Mouse
Purification:	Antigen-specific affinity chromatography followed by Protein A affinity chromatography

Target Details

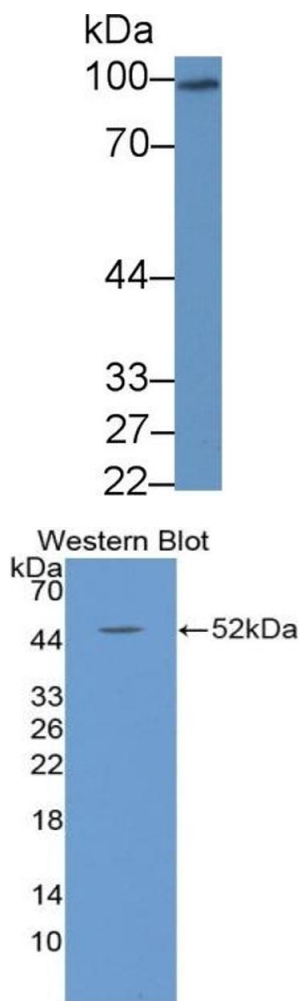
Target:	SYNPO
Alternative Name:	Synaptopodin (SYNPO Products)

Application Details

Application Notes:	Western blotting: 0.5-2 µg/mL 1:500-2000 Immunohistochemistry: 5-20 µg/mL 1:50-200 Immunocytochemistry: 5-20 µg/mL 1:50-200 Optimal working dilutions must be determined by end user.
Comment:	The thermal stability is described by the loss rate. The loss rate was determined by accelerated thermal degradation test, that is, incubate the protein at 37°C for 48h, and no obvious degradation and precipitation were observed. The loss rate is less than 5% within the expiration date under appropriate storage condition.
Restrictions:	For Research Use only

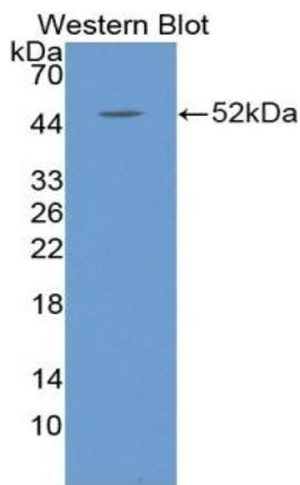
Handling

Format:	Liquid
Buffer:	0.01M PBS, pH 7.4, containing 0.05 % Proclin-300, 50 % glycerol.
Preservative:	ProClin
Precaution of Use:	This product contains ProClin: a POISONOUS AND HAZARDOUS SUBSTANCE which should be handled by trained staff only.
Storage:	4 °C,-20 °C
Storage Comment:	Store at 4°C for frequent use. Stored at -20°C in a manual defrost freezer for two year without detectable loss of activity. Avoid repeated freeze-thaw cycles.
Expiry Date:	24 months



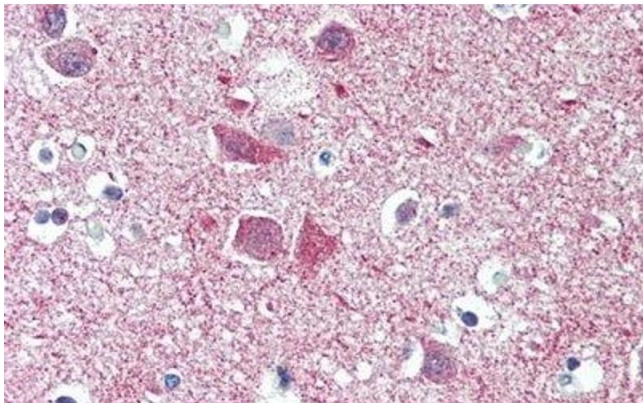
Western Blotting

Image 1. Detection of SYNPO in Mouse Cerebrum lysate using Polyclonal Antibody to Synaptopodin (SYNPO)



Western Blotting

Image 2. Detection of Recombinant SYNPO, Human using Polyclonal Antibody to Synaptopodin (SYNPO)



Immunohistochemistry

Image 3. Detection of SYNPO in Human Cerebrum Tissue using Polyclonal Antibody to Synaptopodin (SYNPO)