

Datasheet for ABIN7435535  
**anti-GLP1R antibody (AA 25-145)**



[Go to Product page](#)

5 Images

### Overview

Quantity:	100 µL
Target:	GLP1R
Binding Specificity:	AA 25-145
Reactivity:	Mouse
Host:	Rabbit
Clonality:	Polyclonal
Conjugate:	This GLP1R antibody is un-conjugated
Application:	Western Blotting (WB), Immunohistochemistry (IHC), Immunoprecipitation (IP), Immunocytochemistry (ICC)

### Product Details

Purpose:	Polyclonal Antibody to Glucagon Like Peptide 1 Receptor (GLP1R)
Immunogen:	Recombinant Glucagon Like Peptide 1 Receptor (GLP1R) corresponding to Pro25~Tyr145 with N-terminal His Tag
Isotype:	IgG
Specificity:	The antibody is a rabbit polyclonal antibody raised against GLP1R. It has been selected for its ability to recognize GLP1R in immunohistochemical staining and western blotting.
Cross-Reactivity:	Human, Rat
Purification:	Antigen-specific affinity chromatography followed by Protein A affinity chromatography

## Target Details

---

Target:	GLP1R
Alternative Name:	Glucagon Like Peptide 1 Receptor ( <a href="#">GLP1R Products</a> )
Pathways:	<a href="#">Positive Regulation of Peptide Hormone Secretion</a> , <a href="#">Hormone Transport</a> , <a href="#">cAMP Metabolic Process</a> , <a href="#">Feeding Behaviour</a>

## Application Details

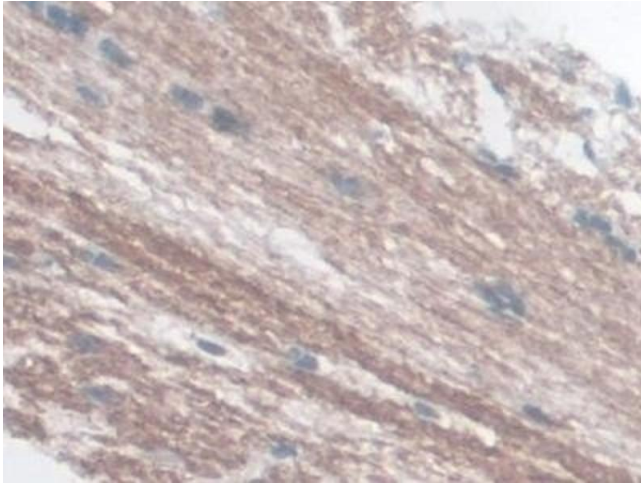
---

Application Notes:	Western blotting: 0.5-2 µg/mL 1:330-1300 Immunohistochemistry: 5-20 µg/mL 1:33-130 Immunocytochemistry: 5-20 µg/mL 1:33-130 Optimal working dilutions must be determined by end user.
Comment:	The thermal stability is described by the loss rate. The loss rate was determined by accelerated thermal degradation test, that is, incubate the protein at 37°C for 48h, and no obvious degradation and precipitation were observed. The loss rate is less than 5% within the expiration date under appropriate storage condition.
Restrictions:	For Research Use only

## Handling

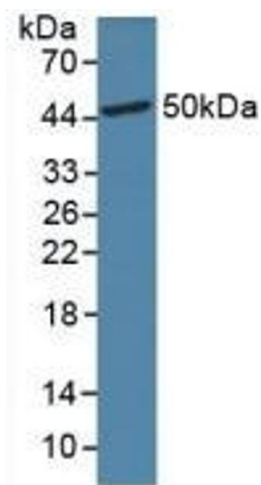
---

Format:	Liquid
Buffer:	0.01M PBS, pH 7.4, containing 0.05 % Proclin-300, 50 % glycerol.
Preservative:	ProClin
Precaution of Use:	This product contains ProClin: a POISONOUS AND HAZARDOUS SUBSTANCE which should be handled by trained staff only.
Storage:	4 °C, -20 °C
Storage Comment:	Store at 4°C for frequent use. Stored at -20°C in a manual defrost freezer for two year without detectable loss of activity. Avoid repeated freeze-thaw cycles.
Expiry Date:	24 months



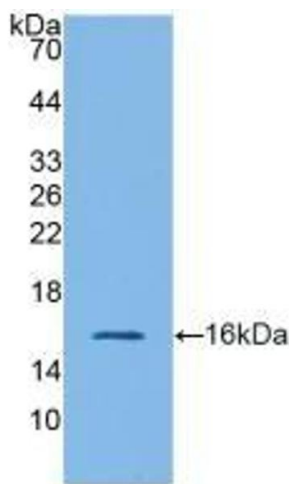
### Immunohistochemistry

**Image 1.** Detection of GLP1R in Mouse Cerebrum Tissue using Polyclonal Antibody to Glucagon Like Peptide 1 Receptor (GLP1R)



### Western Blotting

**Image 2.** Detection of GLP1R in Mouse Brain Tissue using Polyclonal Antibody to Glucagon Like Peptide 1 Receptor (GLP1R)



### Western Blotting

**Image 3.** Detection of Recombinant GLP1R, Mouse using Polyclonal Antibody to Glucagon Like Peptide 1 Receptor (GLP1R)

Please check the [product details page](#) for more images. Overall 5 images are available for ABIN7435535.