



[Go to Product page](#)

Datasheet for ABIN7435583
anti-GCLC antibody (AA 435-636)

2 Images

Overview

Quantity:	100 µL
Target:	GCLC
Binding Specificity:	AA 435-636
Reactivity:	Mouse
Host:	Rabbit
Clonality:	Polyclonal
Conjugate:	This GCLC antibody is un-conjugated
Application:	Western Blotting (WB), Immunohistochemistry (IHC), Immunoprecipitation (IP), Immunocytochemistry (ICC)

Product Details

Purpose:	Polyclonal Antibody to Glutamate Cysteine Ligase, Catalytic (GCLC)
Immunogen:	Recombinant Glutamate Cysteine Ligase, Catalytic (GCLC) corresponding to Asp435~Ser636 with N-terminal His Tag
Isotype:	IgG
Specificity:	The antibody is a rabbit polyclonal antibody raised against GCLC. It has been selected for its ability to recognize GCLC in immunohistochemical staining and western blotting.
Purification:	Antigen-specific affinity chromatography followed by Protein A affinity chromatography

Target Details

Target:	GCLC
---------	------

Target Details

Alternative Name:	Glutamate Cysteine Ligase, Catalytic (GCLC Products)
Background:	GCS, GLCL, GLCLC, Gamma-glutamylcysteine synthetase, Gamma-ECS
Pathways:	Cell RedoxHomeostasis

Application Details

Application Notes:	Western blotting: 0.5-2 µg/mL 1:450-1800 Immunohistochemistry: 5-20 µg/mL 1:45-180 Immunocytochemistry: 5-20 µg/mL 1:45-180 Optimal working dilutions must be determined by end user.
Comment:	The thermal stability is described by the loss rate. The loss rate was determined by accelerated thermal degradation test, that is, incubate the protein at 37°C for 48h, and no obvious degradation and precipitation were observed. The loss rate is less than 5% within the expiration date under appropriate storage condition.
Restrictions:	For Research Use only

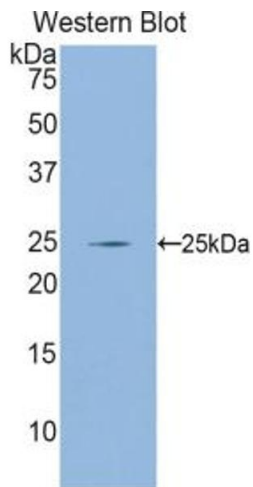
Handling

Format:	Liquid
Buffer:	PBS, pH 7.4, containing 0.02 % Sodium azide, 50 % glycerol.
Preservative:	Sodium azide
Precaution of Use:	This product contains Sodium azide: a POISONOUS AND HAZARDOUS SUBSTANCE which should be handled by trained staff only.
Storage:	4 °C,-20 °C
Storage Comment:	Store at 4°C for frequent use. Stored at -20°C in a manual defrost freezer for two year without detectable loss of activity. Avoid repeated freeze-thaw cycles.
Expiry Date:	24 months



Western Blotting

Image 1. Detection of GCLC in Mouse Liver lysate using Polyclonal Antibody to Glutamate Cysteine Ligase, Catalytic (GCLC)



Western Blotting

Image 2. Detection of Recombinant GCLC, Mouse using Polyclonal Antibody to Glutamate Cysteine Ligase, Catalytic (GCLC)