

Datasheet for ABIN7435631

anti-Phospholipase C gamma 2 antibody (AA 930-1152)**2** Images[Go to Product page](#)

Overview

Quantity:	100 µL
Target:	Phospholipase C gamma 2 (PLCG2)
Binding Specificity:	AA 930-1152
Reactivity:	Human
Host:	Rabbit
Clonality:	Polyclonal
Conjugate:	This Phospholipase C gamma 2 antibody is un-conjugated
Application:	Western Blotting (WB), ELISA, Immunohistochemistry (Paraffin-embedded Sections) (IHC (p)), Immunocytochemistry (ICC), Immunohistochemistry (Frozen Sections) (IHC (fro))

Product Details

Purpose:	Polyclonal Antibody to Phospholipase C Gamma 2, Phosphatidylinositol Specific (PLCg2)
Immunogen:	Recombinant Phospholipase C Gamma 2, Phosphatidylinositol Specific (PLCg2) corresponding to Leu930~Thr1152 with N-terminal His Tag
Isotype:	IgG
Specificity:	The antibody is a rabbit polyclonal antibody raised against PLCg2. It has been selected for its ability to recognize PLCg2 in immunohistochemical staining and western blotting.
Cross-Reactivity:	Mouse, Rat
Purification:	Antigen-specific affinity chromatography followed by Protein A affinity chromatography

Target Details

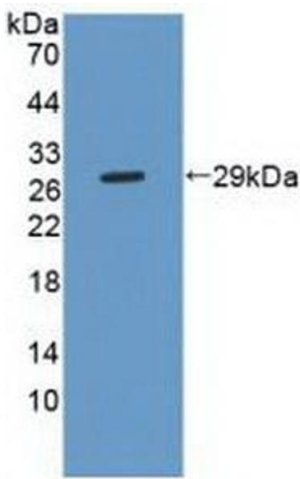
Target:	Phospholipase C gamma 2 (PLCG2)
Alternative Name:	Phospholipase C Gamma 2, Phosphatidylinositol Specific (PLCG2 Products)
Background:	PLC-IV, Phosphoinositide phospholipase C-gamma-2, 1-phosphatidylinositol 4,5-bisphosphate phosphodiesterase gamma-2
Pathways:	RTK Signaling , WNT Signaling , Fc-epsilon Receptor Signaling Pathway , Inositol Metabolic Process , Myometrial Relaxation and Contraction , Toll-Like Receptors Cascades , VEGF Signaling , BCR Signaling

Application Details

Application Notes:	Western blotting: 0.5-2 µg/mL Immunohistochemistry: 5-20 µg/mL Immunocytochemistry: 5-20 µg/mL Optimal working dilutions must be determined by end user.
Comment:	The thermal stability is described by the loss rate. The loss rate was determined by accelerated thermal degradation test, that is, incubate the protein at 37°C for 48h, and no obvious degradation and precipitation were observed. The loss rate is less than 5% within the expiration date under appropriate storage condition.
Restrictions:	For Research Use only

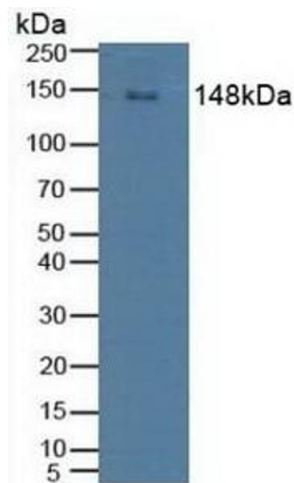
Handling

Format:	Liquid
Buffer:	0.01M PBS, pH 7.4, containing 0.05 % Proclin-300, 50 % glycerol.
Preservative:	ProClin
Precaution of Use:	This product contains ProClin: a POISONOUS AND HAZARDOUS SUBSTANCE which should be handled by trained staff only.
Storage:	4 °C,-20 °C
Storage Comment:	Store at 4°C for frequent use. Stored at -20°C in a manual defrost freezer for two year without detectable loss of activity. Avoid repeated freeze-thaw cycles.
Expiry Date:	24 months



Western Blotting

Image 1. Detection of Recombinant PLCg2, Human using Polyclonal Antibody to Phospholipase C Gamma 2, Phosphatidylinositol Specific (PLCg2)



Western Blotting

Image 2. Detection of PLCg2 in Human Raji Cells using Polyclonal Antibody to Phospholipase C Gamma 2, Phosphatidylinositol Specific (PLCg2)