

Datasheet for ABIN7435652
anti-INSL3 antibody (AA 63-129)



[Go to Product page](#)

2 Images

Overview

Quantity:	100 µL
Target:	INSL3
Binding Specificity:	AA 63-129
Reactivity:	Rat
Host:	Rabbit
Clonality:	Polyclonal
Conjugate:	This INSL3 antibody is un-conjugated
Application:	Western Blotting (WB), Immunohistochemistry (IHC), Immunocytochemistry (ICC), Immunoprecipitation (IP)

Product Details

Purpose:	Polyclonal Antibody to Insulin Like Protein 3 (INSL3)
Immunogen:	Recombinant Insulin Like Protein 3 (INSL3) corresponding to Gln63~His129 with Two N-terminal Tags, His-tag and SUMO-tag
Isotype:	IgG
Specificity:	The antibody is a rabbit polyclonal antibody raised against INSL3. It has been selected for its ability to recognize INSL3 in immunohistochemical staining and western blotting.
Purification:	Antigen-specific affinity chromatography followed by Protein A affinity chromatography

Target Details

Target:	INSL3
---------	-------

Target Details

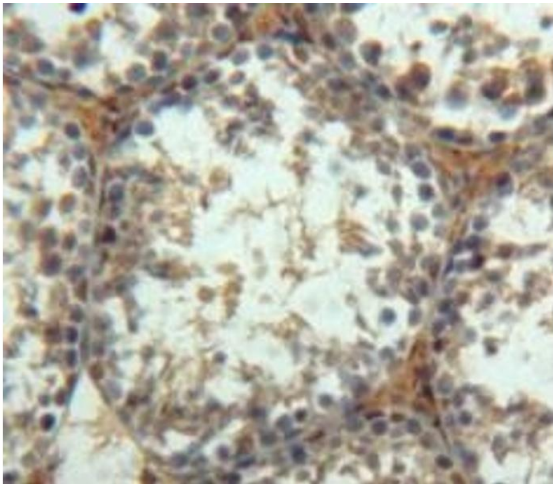
Alternative Name:	INSL3 (INSL3 Products)
Background:	RLNL, RLF, Relaxin-Like Factor, Leydig Cell, Leydig insulin-like peptide
UniProt:	Q9WUK0
Pathways:	Hormone Activity , cAMP Metabolic Process

Application Details

Application Notes:	Western blotting: 0.5-2 µg/mL, Immunohistochemistry: 5-20 µg/mL, Immunocytochemistry: 5-20 µg/mL, Optimal working dilutions must be determined by end user.
Comment:	The thermal stability is described by the loss rate. The loss rate was determined by accelerated thermal degradation test, that is, incubate the protein at 37°C for 48h, and no obvious degradation and precipitation were observed. The loss rate is less than 5% within the expiration date under appropriate storage condition.
Restrictions:	For Research Use only

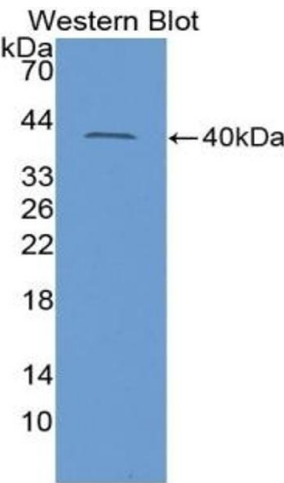
Handling

Format:	Liquid
Concentration:	0.5 mg/mL
Buffer:	PBS, pH 7.4, containing 0.02 % Sodium azide, 50 % glycerol.
Preservative:	Sodium azide
Precaution of Use:	This product contains Sodium azide: a POISONOUS AND HAZARDOUS SUBSTANCE which should be handled by trained staff only.
Storage:	4 °C, -20 °C
Storage Comment:	Store at 4°C for frequent use. Stored at -20°C in a manual defrost freezer for two year without detectable loss of activity. Avoid repeated freeze-thaw cycles.
Expiry Date:	24 months



Immunohistochemistry

Image 1. #VALUE!



Western Blotting

Image 2. Detection of Recombinant INSL3, Rat using Polyclonal Antibody to Insulin Like Protein 3 (INSL3)