



[Go to Product page](#)

Datasheet for ABIN7435754

anti-Elastase 3A antibody (AA 16-270)

4 Images

Overview

Quantity:	100 µL
Target:	Elastase 3A (ELA3A)
Binding Specificity:	AA 16-270
Reactivity:	Human
Host:	Rabbit
Clonality:	Polyclonal
Conjugate:	This Elastase 3A antibody is un-conjugated
Application:	Western Blotting (WB), Immunohistochemistry (IHC), Immunoprecipitation (IP), Immunocytochemistry (ICC)

Product Details

Purpose:	Polyclonal Antibody to Elastase 3A (ELA3A)
Immunogen:	Recombinant Elastase 3A (ELA3A) corresponding to Ser16~His270 with N-terminal His and GST Tag
Isotype:	IgG
Specificity:	The antibody is a rabbit polyclonal antibody raised against ELA3A. It has been selected for its ability to recognize ELA3A in immunohistochemical staining and western blotting.
Cross-Reactivity:	Cow, Mouse, Pig, Rat
Purification:	Antigen-specific affinity chromatography followed by Protein A affinity chromatography

Target Details

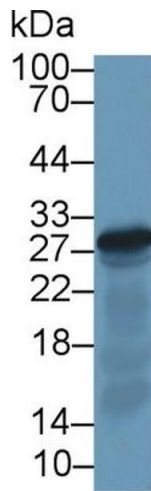
Target:	Elastase 3A (ELA3A)
Alternative Name:	Elastase 3A (ELA3A Products)
Background:	CELA3A, ELA3, Chymotrypsin-Like Elastase Family Member 3A, Protease E

Application Details

Application Notes:	Western blotting: 0.5-2 µg/mL Immunohistochemistry: 5-20 µg/mL Immunocytochemistry: 5-20 µg/mL Optimal working dilutions must be determined by end user.
Comment:	The thermal stability is described by the loss rate. The loss rate was determined by accelerated thermal degradation test, that is, incubate the protein at 37°C for 48h, and no obvious degradation and precipitation were observed. The loss rate is less than 5% within the expiration date under appropriate storage condition.
Restrictions:	For Research Use only

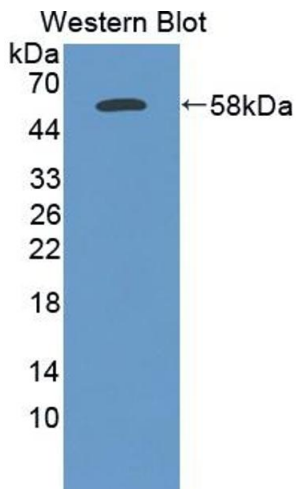
Handling

Format:	Liquid
Buffer:	PBS, pH 7.4, containing 0.02 % Sodium azide, 50 % glycerol.
Preservative:	Sodium azide
Precaution of Use:	This product contains Sodium azide: a POISONOUS AND HAZARDOUS SUBSTANCE which should be handled by trained staff only.
Storage:	4 °C,-20 °C
Storage Comment:	Store at 4°C for frequent use. Stored at -20°C in a manual defrost freezer for two year without detectable loss of activity. Avoid repeated freeze-thaw cycles.
Expiry Date:	24 months



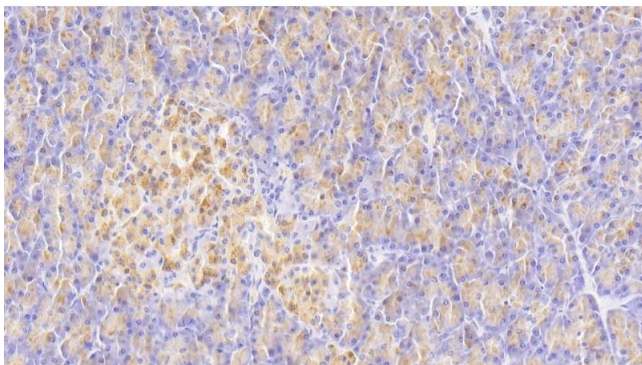
Western Blotting

Image 1. Detection of ELA3A in Bovine Pancreas lysate using Polyclonal Antibody to Elastase 3A (ELA3A)



Western Blotting

Image 2. Detection of Recombinant ELA3A, Human using Polyclonal Antibody to Elastase 3A (ELA3A)



Immunohistochemistry

Image 3. Detection of ELA3A in Human Pancreas Tissue using Polyclonal Antibody to Elastase 3A (ELA3A)

Please check the [product details page](#) for more images. Overall 4 images are available for ABIN7435754.