

Datasheet for ABIN7435763
anti-CTRB2 antibody (AA 34-263)

2 Images

[Go to Product page](#)

Overview

Quantity:	100 µL
Target:	CTRB2
Binding Specificity:	AA 34-263
Reactivity:	Human
Host:	Rabbit
Clonality:	Polyclonal
Conjugate:	This CTRB2 antibody is un-conjugated
Application:	Immunohistochemistry (IHC), Western Blotting (WB), Immunoprecipitation (IP), Immunocytochemistry (ICC)

Product Details

Purpose:	Polyclonal Antibody to Chymotrypsinogen B2 (CTRB2)
Immunogen:	Recombinant Chymotrypsinogen B2 (CTRB2) corresponding to Ile34~Asn263 with N-terminal His and GST Tag
Isotype:	IgG
Specificity:	The antibody is a rabbit polyclonal antibody raised against CTRB2. It has been selected for its ability to recognize CTRB2 in immunohistochemical staining and western blotting.
Cross-Reactivity:	Mouse, Rat
Purification:	Antigen-specific affinity chromatography followed by Protein A affinity chromatography

Target Details

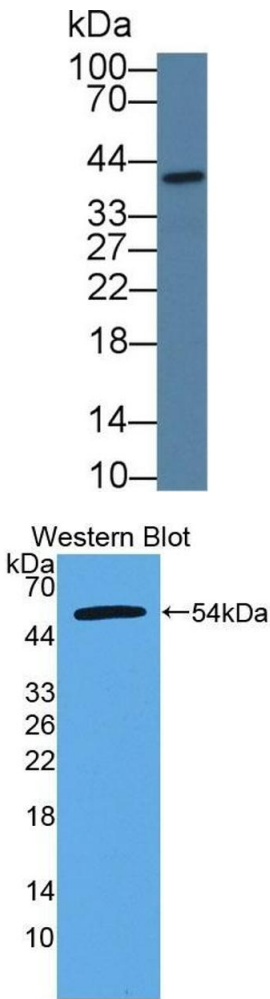
Target:	CTRB2
Alternative Name:	Chymotrypsinogen B2 (CTRB2 Products)

Application Details

Application Notes:	Western blotting: 0.5-2 µg/mL Immunohistochemistry: 5-20 µg/mL Immunocytochemistry: 5-20 µg/mL Optimal working dilutions must be determined by end user.
Comment:	The thermal stability is described by the loss rate. The loss rate was determined by accelerated thermal degradation test, that is, incubate the protein at 37°C for 48h, and no obvious degradation and precipitation were observed. The loss rate is less than 5% within the expiration date under appropriate storage condition.
Restrictions:	For Research Use only

Handling

Format:	Liquid
Buffer:	PBS, pH 7.4, containing 0.02 % Sodium azide, 50 % glycerol.
Preservative:	Sodium azide
Precaution of Use:	This product contains Sodium azide: a POISONOUS AND HAZARDOUS SUBSTANCE which should be handled by trained staff only.
Storage:	4 °C,-20 °C
Storage Comment:	Store at 4°C for frequent use. Stored at -20°C in a manual defrost freezer for two year without detectable loss of activity. Avoid repeated freeze-thaw cycles.
Expiry Date:	24 months



Western Blotting

Image 1. Detection of CTRB2 in Human BXPC3 cell lysate using Polyclonal Antibody to Chymotrypsinogen B2 (CTRB2)

Western Blotting

Image 2. Detection of Recombinant CTRB2, Human using Polyclonal Antibody to Chymotrypsinogen B2 (CTRB2)