



[Go to Product page](#)

Datasheet for ABIN7435826  
**anti-SHC1 antibody (AA 272-559)**

4 Images

### Overview

Quantity:	100 µL
Target:	SHC1
Binding Specificity:	AA 272-559
Reactivity:	Human
Host:	Rabbit
Clonality:	Polyclonal
Conjugate:	This SHC1 antibody is un-conjugated
Application:	Western Blotting (WB), Immunohistochemistry (IHC), Immunoprecipitation (IP), Immunocytochemistry (ICC)

### Product Details

Purpose:	Polyclonal Antibody to SHC-Transforming Protein 1 (SHC1)
Immunogen:	Recombinant SHC-Transforming Protein 1 (SHC1) corresponding to Glu272~His559 with N-terminal His Tag
Isotype:	IgG
Specificity:	The antibody is a rabbit polyclonal antibody raised against SHC1. It has been selected for its ability to recognize SHC1 in immunohistochemical staining and western blotting.
Purification:	Antigen-specific affinity chromatography followed by Protein A affinity chromatography

### Target Details

Target:	SHC1
---------	------

## Target Details

---

Alternative Name:	SHC-Transforming Protein 1 ( <a href="#">SHC1 Products</a> )
Background:	SHC, SHCA, p52SHC, p66, p66SHC, SHC-transforming protein 3, SHC-transforming protein A, Src homology 2 domain-containing-transforming protein C1
Pathways:	<a href="#">RTK Signaling</a> , <a href="#">TCR Signaling</a> , <a href="#">Fc-epsilon Receptor Signaling Pathway</a> , <a href="#">EGFR Signaling Pathway</a> , <a href="#">Neurotrophin Signaling Pathway</a> , <a href="#">ER-Nucleus Signaling</a> , <a href="#">Signaling Events mediated by VEGFR1 and VEGFR2</a>

## Application Details

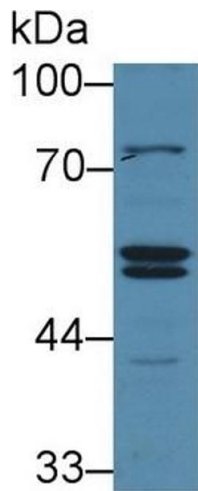
---

Application Notes:	Western blotting: 0.5-2 µg/mL 1:230-940 Immunohistochemistry: 5-20 µg/mL 1:23-94 Immunocytochemistry: 5-20 µg/mL 1:23-94 Optimal working dilutions must be determined by end user.
Comment:	The thermal stability is described by the loss rate. The loss rate was determined by accelerated thermal degradation test, that is, incubate the protein at 37°C for 48h, and no obvious degradation and precipitation were observed. The loss rate is less than 5% within the expiration date under appropriate storage condition.
Restrictions:	For Research Use only

## Handling

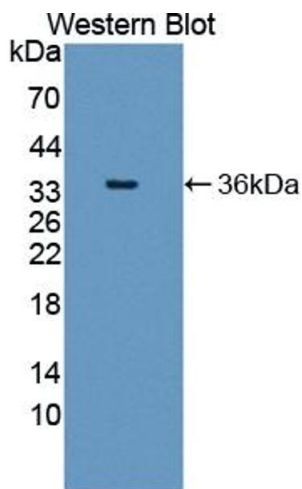
---

Format:	Liquid
Buffer:	PBS, pH 7.4, containing 0.02 % Sodium azide, 50 % glycerol.
Preservative:	Sodium azide
Precaution of Use:	This product contains Sodium azide: a POISONOUS AND HAZARDOUS SUBSTANCE which should be handled by trained staff only.
Storage:	4 °C,-20 °C
Storage Comment:	Store at 4°C for frequent use. Stored at -20°C in a manual defrost freezer for two year without detectable loss of activity. Avoid repeated freeze-thaw cycles.
Expiry Date:	24 months



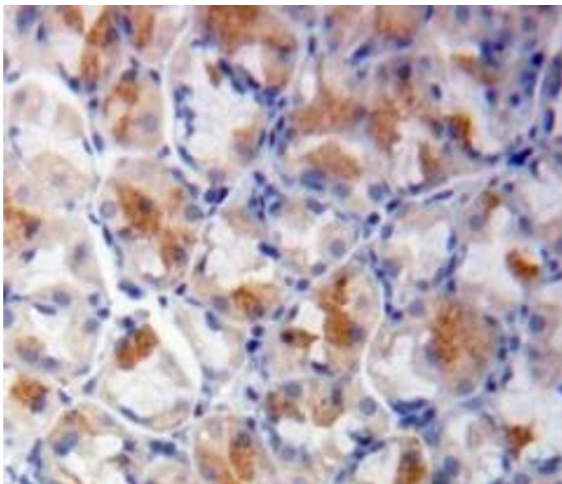
#### Western Blotting

**Image 1.** Detection of SHC1 in Human HeLa cell lysate using Polyclonal Antibody to SHC-Transforming Protein 1 (SHC1)



#### Western Blotting

**Image 2.** Detection of Recombinant SHC1, Human using Polyclonal Antibody to SHC-Transforming Protein 1 (SHC1)



#### Immunohistochemistry

**Image 3.** #VALUE!

Please check the [product details page](#) for more images. Overall 4 images are available for ABIN7435826.