



[Go to Product page](#)

Datasheet for ABIN7435847
anti-TUBB1 antibody (AA 182-437)

5 Images

Overview

Quantity:	100 µL
Target:	TUBB1
Binding Specificity:	AA 182-437
Reactivity:	Mouse
Host:	Rabbit
Clonality:	Polyclonal
Conjugate:	This TUBB1 antibody is un-conjugated
Application:	Western Blotting (WB), Immunohistochemistry (IHC), Immunocytochemistry (ICC), Immunoprecipitation (IP)

Product Details

Purpose:	Polyclonal Antibody to Tubulin Beta 1 (TUBb1)
Immunogen:	Recombinant Tubulin Beta 1 (TUBb1) corresponding to Pro182~Glu437 with N-terminal His Tag
Isotype:	IgG
Specificity:	The antibody is a rabbit polyclonal antibody raised against TUBb1. It has been selected for its ability to recognize TUBb1 in immunohistochemical staining and western blotting.
Purification:	Antigen-specific affinity chromatography followed by Protein A affinity chromatography

Target Details

Target:	TUBB1
---------	-------

Target Details

Alternative Name: Tubulin Beta 1 ([TUBB1 Products](#))

Pathways: [Microtubule Dynamics](#)

Application Details

Application Notes: Western blotting: 0.5-2 µg/mL
1:370-1500 Immunohistochemistry: 5-20 µg/mL
1:37-150 Immunocytochemistry: 5-20 µg/mL
1:37-150 Optimal working dilutions must be determined by end user.

Comment: The thermal stability is described by the loss rate. The loss rate was determined by accelerated thermal degradation test, that is, incubate the protein at 37°C for 48h, and no obvious degradation and precipitation were observed. The loss rate is less than 5% within the expiration date under appropriate storage condition.

Restrictions: For Research Use only

Handling

Format: Liquid

Buffer: PBS, pH 7.4, containing 0.02 % Sodium azide, 50 % glycerol.

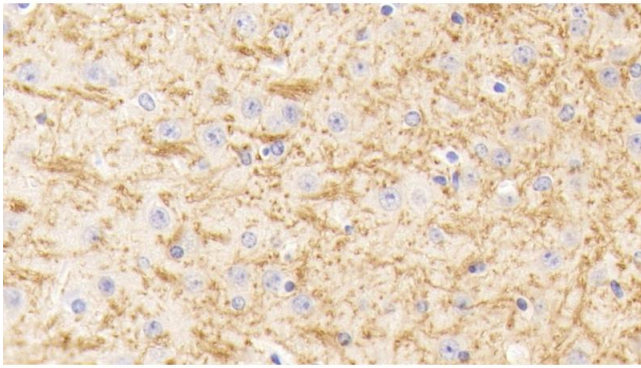
Preservative: Sodium azide

Precaution of Use: This product contains Sodium azide: a POISONOUS AND HAZARDOUS SUBSTANCE which should be handled by trained staff only.

Storage: 4 °C,-20 °C

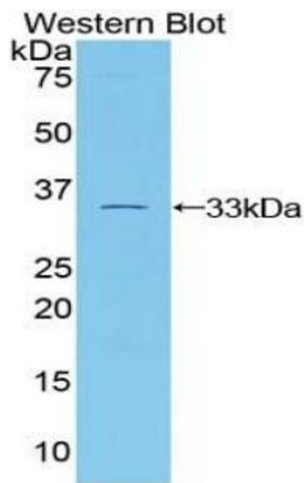
Storage Comment: Store at 4°C for frequent use. Stored at -20°C in a manual defrost freezer for two year without detectable loss of activity. Avoid repeated freeze-thaw cycles.

Expiry Date: 24 months



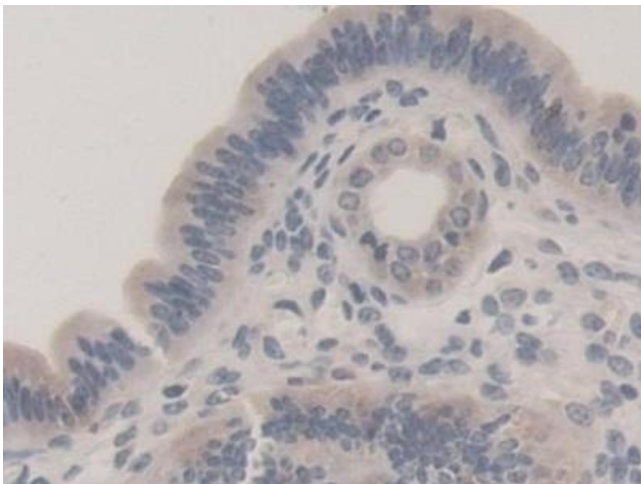
Immunohistochemistry

Image 1. Detection of TUBb1 in Mouse Cerebrum Tissue using Polyclonal Antibody to Tubulin Beta 1 (TUBb1)



Western Blotting

Image 2. Detection of Recombinant TUBb1, Mouse using Polyclonal Antibody to Tubulin Beta 1 (TUBb1)



Immunohistochemistry

Image 3. Detection of TUBb1 in Mouse Uterus Tissue using Polyclonal Antibody to Tubulin Beta 1 (TUBb1)

Please check the [product details page](#) for more images. Overall 5 images are available for ABIN7435847.