

Datasheet for ABIN7435856

anti-IFI30 antibody (AA 1-250)

9 Images

[Go to Product page](#)

Overview

Quantity:	100 µL
Target:	IFI30
Binding Specificity:	AA 1-250
Reactivity:	Human
Host:	Rabbit
Clonality:	Polyclonal
Conjugate:	This IFI30 antibody is un-conjugated
Application:	Western Blotting (WB), Immunoprecipitation (IP), Immunohistochemistry (IHC), Immunocytochemistry (ICC)

Product Details

Purpose:	Polyclonal Antibody to Interferon Gamma Inducible Protein 30 (IFI30)
Immunogen:	Recombinant Interferon Gamma Inducible Protein 30 (IFI30) corresponding to Met1~Lys250
Isotype:	IgG
Specificity:	The antibody is a rabbit polyclonal antibody raised against IFI30. It has been selected for its ability to recognize IFI30 in immunohistochemical staining and western blotting.
Purification:	Antigen-specific affinity chromatography followed by Protein A affinity chromatography

Target Details

Target:	IFI30
---------	-------

Target Details

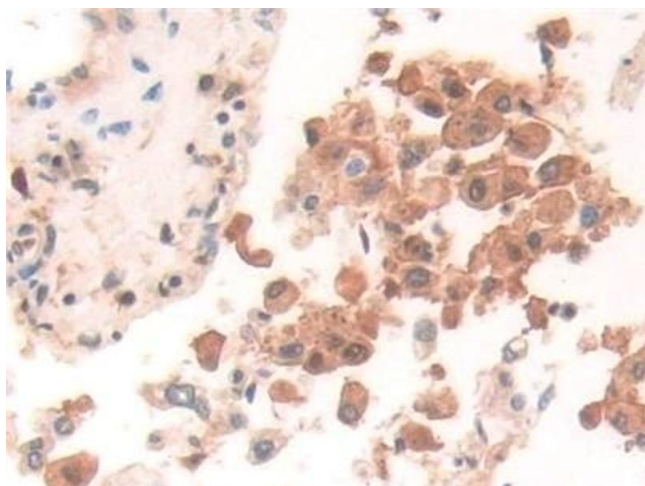
Alternative Name:	Interferon Gamma Inducible Protein 30 (IFI30 Products)
Background:	GILT, IP30, Legumaturain, Gamma-Interferon-Inducible Lysosomal Thiol Reductase, Gamma-interferon-inducible lysosomal thiol reductase

Application Details

Application Notes:	Western blotting: 0.5-2 µg/mL Immunohistochemistry: 5-20 µg/mL Immunocytochemistry: 5-20 µg/mL Optimal working dilutions must be determined by end user.
Comment:	The thermal stability is described by the loss rate. The loss rate was determined by accelerated thermal degradation test, that is, incubate the protein at 37°C for 48h, and no obvious degradation and precipitation were observed. The loss rate is less than 5% within the expiration date under appropriate storage condition.
Restrictions:	For Research Use only

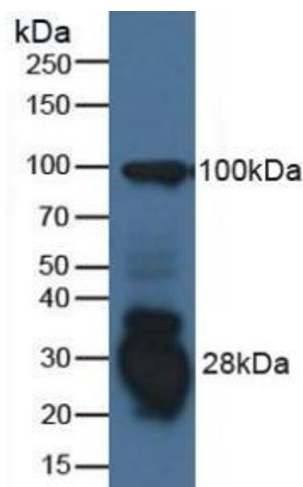
Handling

Format:	Liquid
Buffer:	0.01M PBS, pH 7.4, containing 0.05 % Proclin-300, 50 % glycerol.
Preservative:	ProClin
Precaution of Use:	This product contains ProClin: a POISONOUS AND HAZARDOUS SUBSTANCE which should be handled by trained staff only.
Storage:	4 °C,-20 °C
Storage Comment:	Store at 4°C for frequent use. Stored at -20°C in a manual defrost freezer for two year without detectable loss of activity. Avoid repeated freeze-thaw cycles.
Expiry Date:	24 months



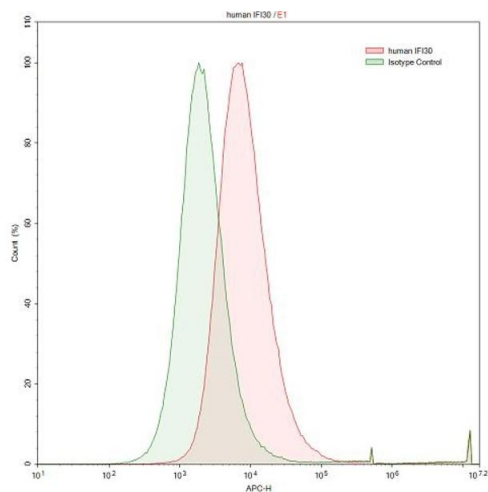
Immunohistochemistry

Image 1. Detection of IFI30 in Human Lung Tissue using Polyclonal Antibody to Interferon Gamma Inducible Protein 30 (IFI30)



Western Blotting

Image 2. Detection of IFI30 in Human Raji Cells using Polyclonal Antibody to Interferon Gamma Inducible Protein 30 (IFI30)



Flow Cytometry

Image 3. Detection of IFI30 in Raji human Burkitt's lymphoma cell line using Polyclonal Antibody to Interferon Gamma Inducible Protein 30 (IFI30)

Please check the [product details page](#) for more images. Overall 9 images are available for ABIN7435856.